

BEYOND NORTHWESTERN

THE UNDERGRADUATE CLASS OF 2020

highlights

First destination study six months after graduation

This report represents data from 1728 (82%) members of the Class of 2020. 2105 undergraduate students graduated in Fall 2019, Winter 2020, Spring 2020, and Summer 2020, according to the University Registrar.

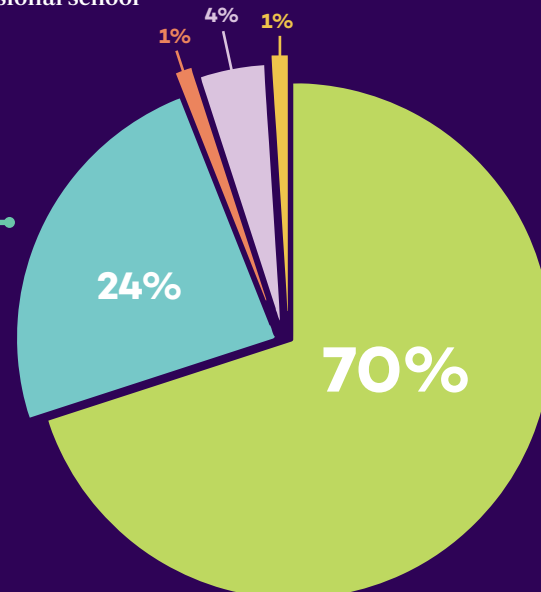
18%	Business Services, Financial Services, Investment Banking
15%	Consulting
14%	Communications, Marketing, Media
14%	Engineering
9%	Biotechnology, Healthcare, Pharmaceutical
7%	Government, Non-profit
6%	Technology
5%	Education, Teaching
4%	Research, Science
3%	Entertainment
3%	Law
1%	Performing, Visual Arts
2%	Other

WHERE IS THE CLASS OF 2020 NOW?

Within six months of graduation:

70% were employed
24% were enrolled in graduate or professional school, or participating in a fellowship
1% were engaged in military service, volunteer work, or other career-related activities

4% were actively job searching
1% were actively applying to graduate or professional school



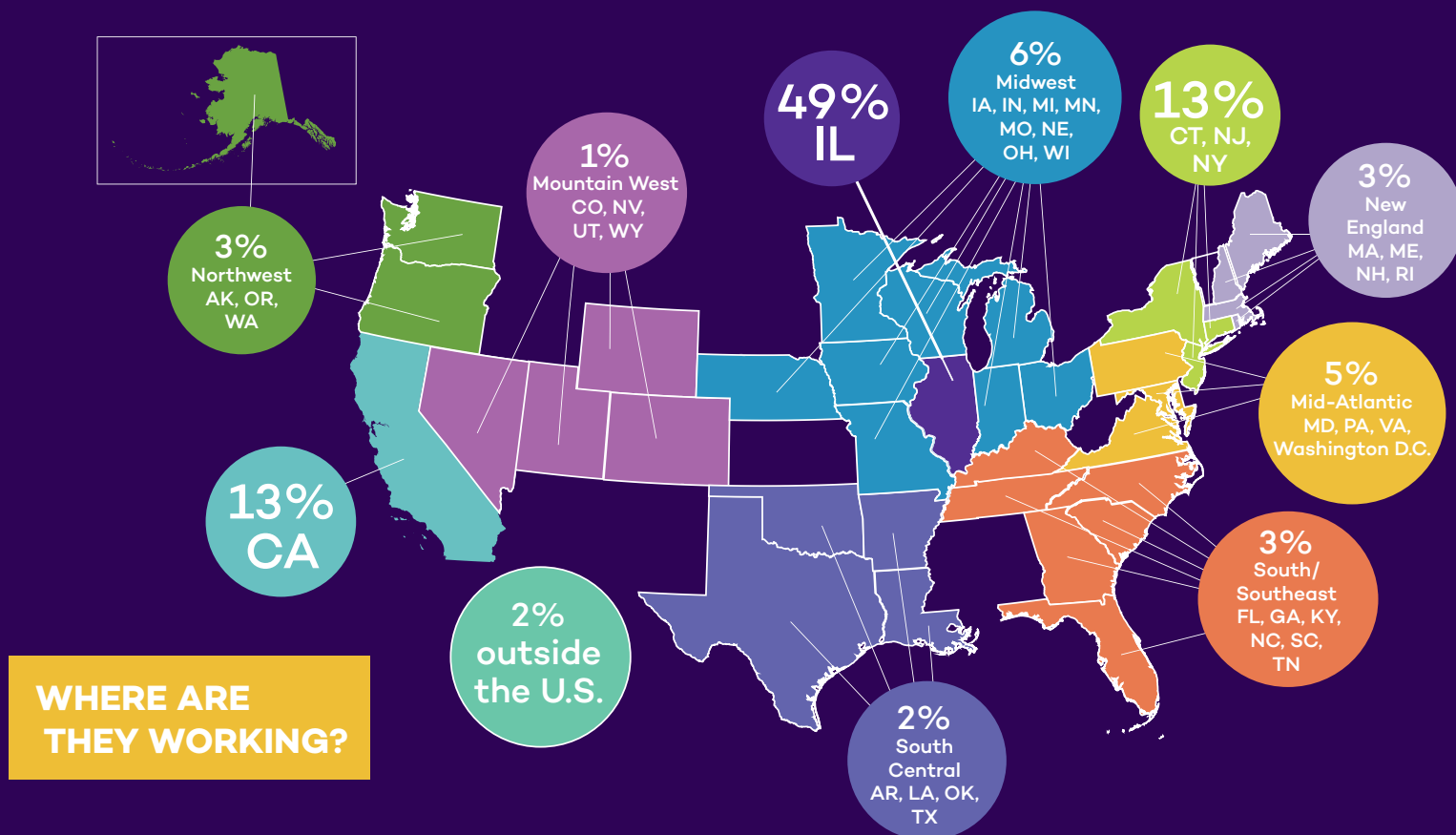
CLASS OF 2020 EMPLOYMENT

1203 (70%) recent graduates were employed six months after graduation. Industry information was available for 1066 of these graduates.

SALARY INFORMATION

Industry	Mean	Range
Biotechnology, Healthcare, Pharmaceuticals	\$49,654	\$24,000-\$110,000
Business Services	\$68,139	\$37,000-\$92,080
Communications, Marketing, Media	\$52,145	\$10,000-\$125,000
Consulting	\$78,283	\$40,000-\$90,000
Education, Teaching	\$38,137	\$10,655-\$67,000
Engineering	\$83,703	\$35,000-\$150,000
Entertainment	\$46,289	\$14,760-\$154,000
Financial Services	\$78,750	\$35,000-\$250,000
Government, Non-profit	\$39,880	\$15,000-\$70,000
Investment Banking	\$82,789	\$45,000-\$100,000
Law	\$46,280	\$35,000-\$60,000
Research, Science	\$39,789	\$31,700-\$65,000
Technology	\$86,658	\$44,000-\$128,000

Starting salary information was available for approximately 463 of the recent graduates who were employed full-time six months after graduation.



Locations were available for 988 employed recent graduates.
For virtual work, location of the company was prioritized over location of the student/alumni.

EXPERIENTIAL LEARNING OPPORTUNITIES, INTERNSHIPS, RESEARCH, AND DEEP INVOLVEMENT

EXPERIENTIAL LEARNING OPPORTUNITIES

As part of the 2020 Post-Graduation Survey (one source of information for this study), recent graduates were given a list of 21 experiential learning opportunities and asked to check all those in which they had participated as undergraduates. 722 recent graduates responded to this question.

93% reported that they had engaged in one or more experiential learning opportunities.

INTERNSHIPS





72% reported that they had participated in one or more internship experiences.

RESEARCH

58% reported that they had participated in one or more research experiences.

DEEP INVOLVEMENT

91% reported that they had been “deeply” involved in one or more student organizations, clubs, or varsity athletics.

-  facebook.com/nucareeradvance
-  instagram.com/nucareeradvance
-  twitter.com/nucareeradvance
-  bit.ly/ncalinkedin

If you have questions about this study, please contact the Director of Employer Recruitment and Engagement, Geni Harclerode, at genevieve.harclerode@northwestern.edu. School of Professional Studies graduates were not included in this report.

Northwestern | CAREER ADVANCEMENT

northwestern.edu/careers | nca@northwestern.edu
620 & 630 Lincoln Street, Evanston, IL 60208 | (847) 491-3700