

Vice President and Chief Human Resources Officer
Lorraine Goffe

Executive Assistant
Noelia Vargas

Chief of Staff
Janet Walzer

Senior Manager of
Financial Planning & Strategic
HR Projects
Damien Trimuel

PT Administrative Assistant
Julie Robbins

Assistant Vice President, HR,
Employee Experience
Robert Hartman

Director of
HR Business Partners/
Consulting and Policy
Karin Schmidt

Director of
Talent Acquisition
Chris Fyfe

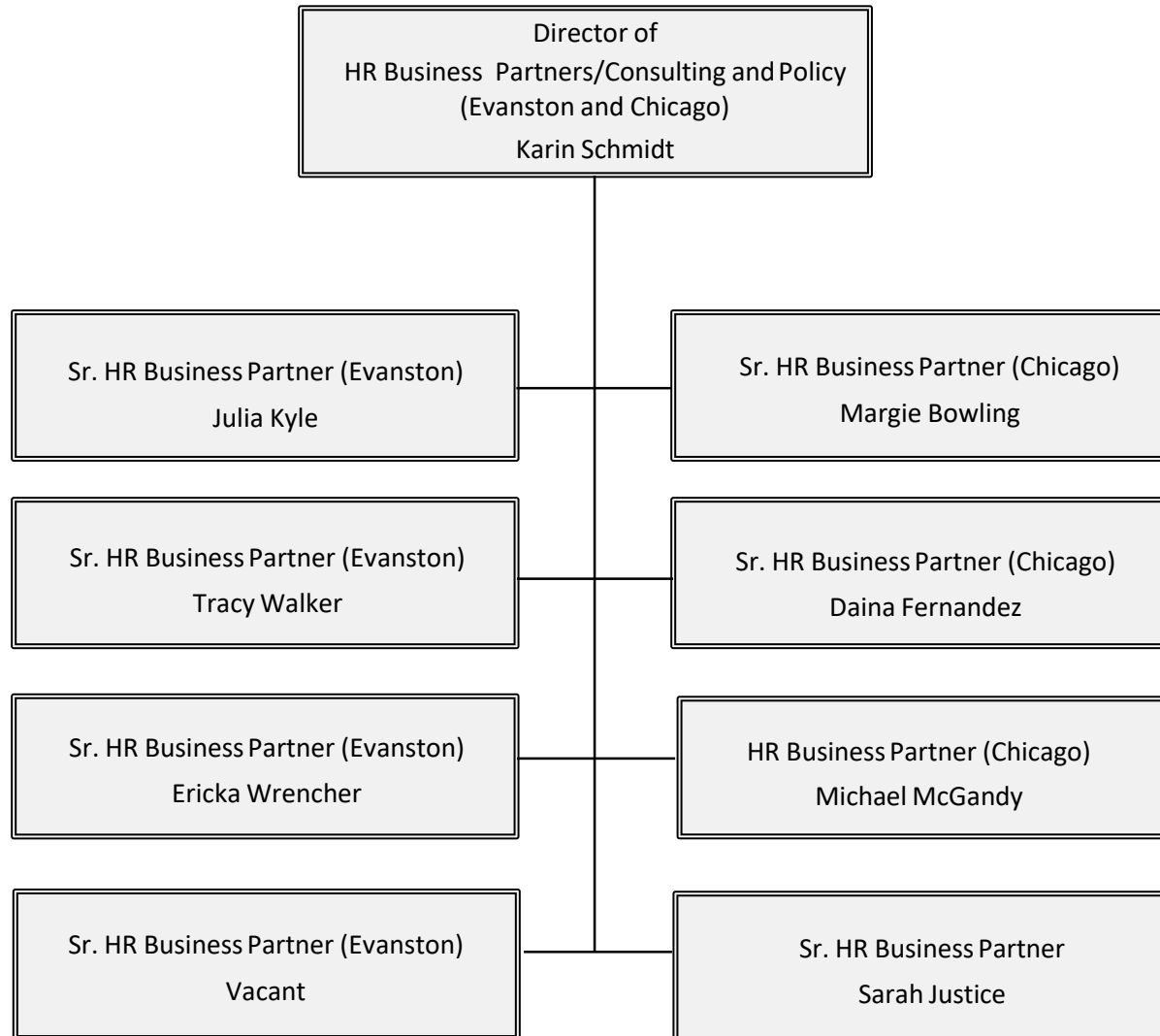
Interim Director of
Talent Development &
Well-being
Angela Zentefis

Assistant Vice President,
HR, Support and Services
Craig Duetsch

Director of
Compensation
(Exec comp support for CHRO)
Colleen Plant

Director of
HR Operations, Payroll, Tax,
Reporting & Analytics
Chris Tondini

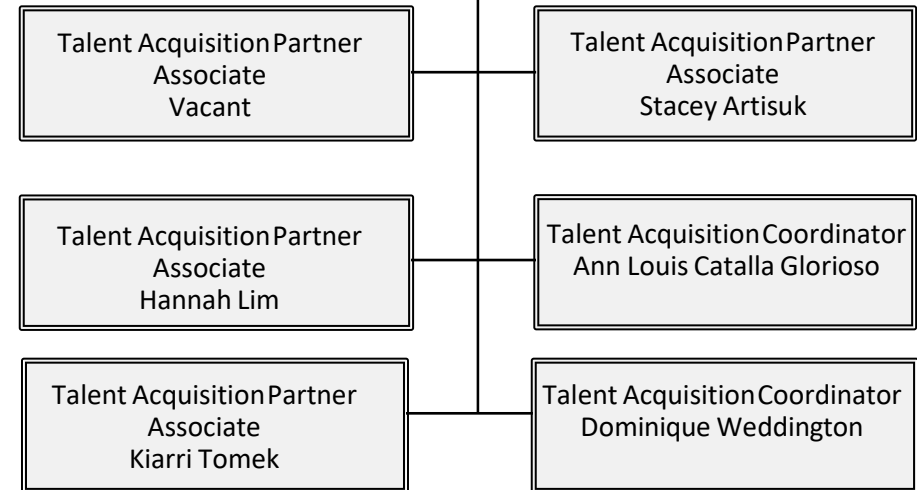
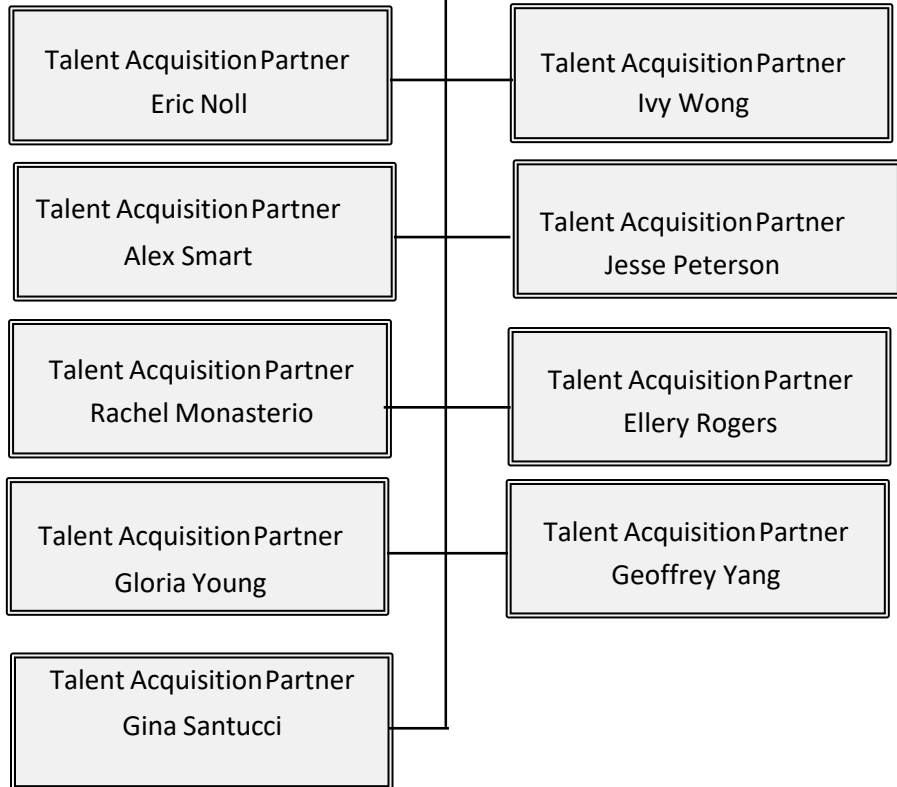
Executive Director of
Benefits
Joseph Park

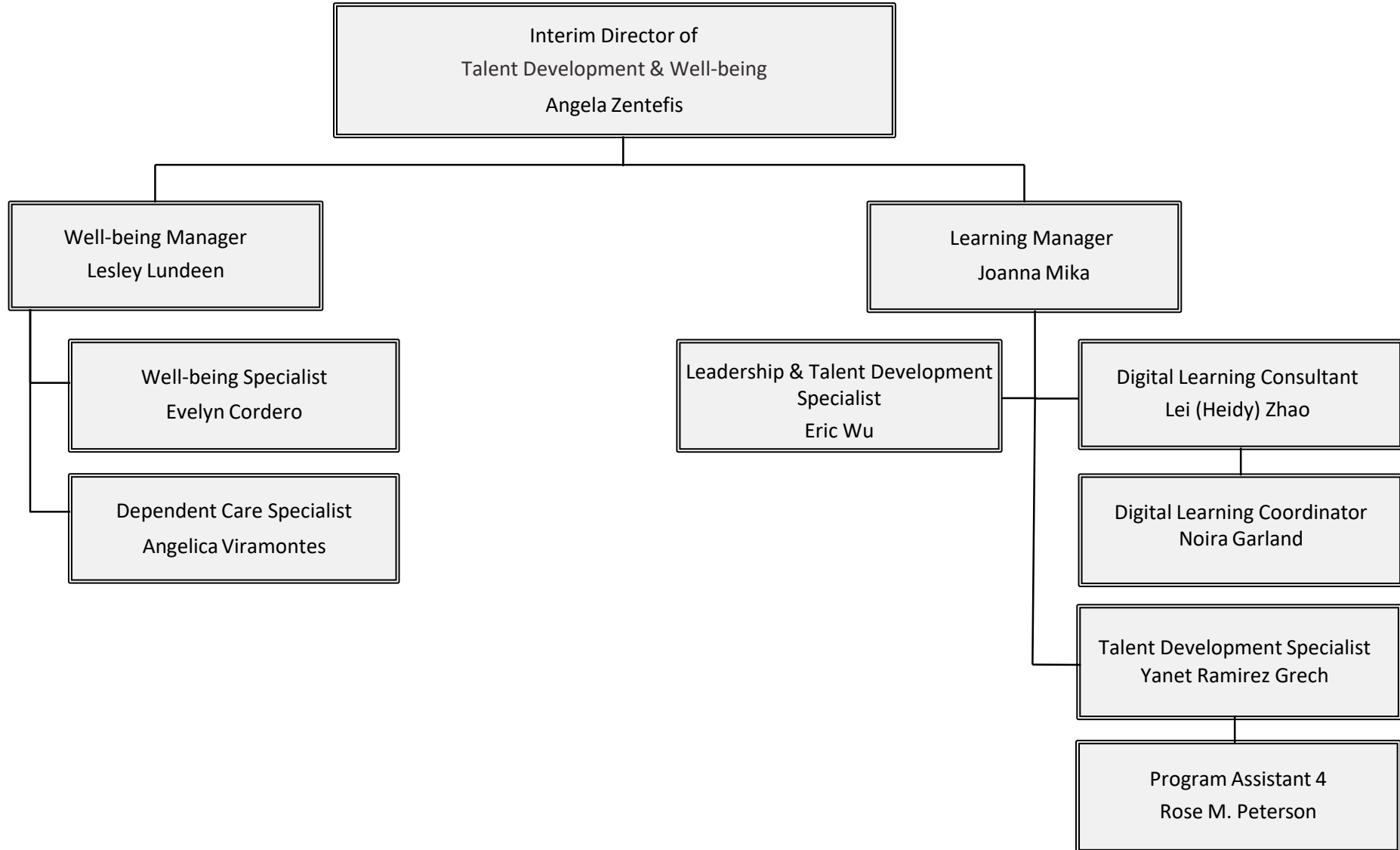


Director of Talent Acquisition
Chris Fyfe

Talent Acquisition Partner Manager -
Professional & Executive Search
Monique Burke

Talent Acquisition Manager - Early Career
& Experienced Hires
Melissa Waggoner





Director of
HR Operations, Payroll, Tax, Reporting & Analytics
Chris Tondini

AskHR Support Center Manager
Sophie Stern
(see detailed askHR chart)

Associate Director of HR Support, Process & Analytics
Garth Fowler
(see detailed Support, Process & Analytics chart)

Manager of HR Operations
Julie Phelan

Manager of Payroll
Leslie Johnson
(see Payroll & Tax chart)

Manager of Payroll Tax
Vacant
(see Payroll & Tax chart)

HR Operations Supervisor
Ro Torres

HR Operations Data Analyst
Karen Kohler Davis

HR Operations Coordinator II
Lizette Zapata-Pelaez

HR Operations Coordinator II
Liliana Zapata

HR Operations Coordinator II
Sandra Glenn

HR Operations Coordinator II
Frank Jefferis

HR Operations Coordinator II
Yohana Medina

HR Operations Coordinator II
Silvya Peralta

