

Vice President and Chief Human Resources Officer  
Lorraine Goffe

Executive Assistant  
Noelia Vargas

Senior Director of  
Communications and  
Strategy/Chief of Staff  
Janet Walzer

Senior Manager of  
Financial Planning & Strategic  
HR Projects  
Damien Trimuel

PT Administrative Assistant  
Julie Robbins

Assistant Vice President, HR,  
Employee Experience  
Robert Hartman

Director of  
HR Business Partners/  
Consulting and Policy  
Karin Schmidt

Director of  
Talent Acquisition  
Chris Fyfe

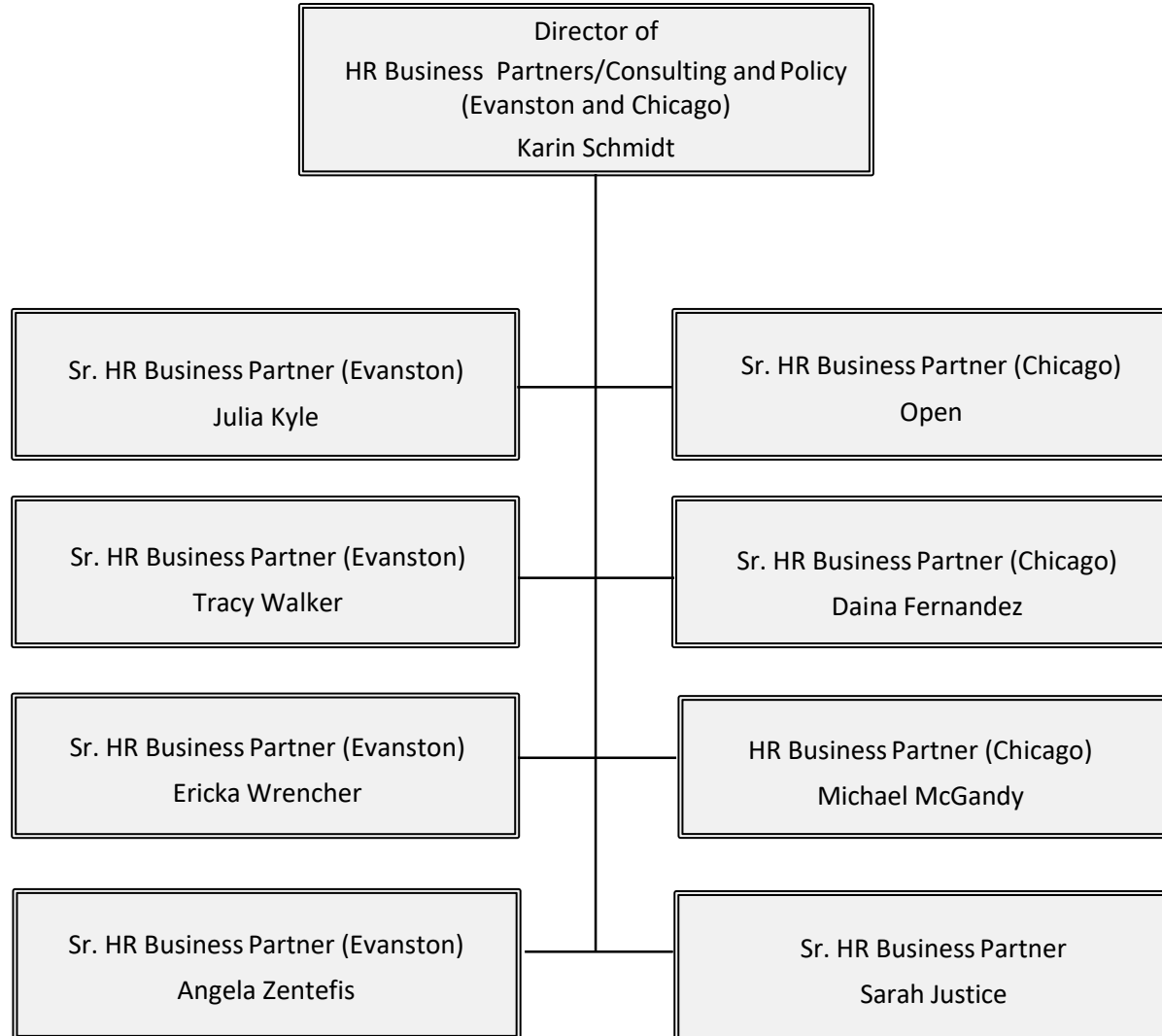
Director of  
Talent Development &  
Well-being  
Bill Chafetz

Assistant Vice President,  
HR, Support and Services  
Craig Duetsch

Director of  
HR Operations, Payroll, Tax,  
Reporting & Analytics  
Yvette Davis

Interim Director of  
Compensation  
Peg Wolski

Executive Director of  
Benefits  
Anne Fish



Director of Talent Acquisition  
Chris Fyfe

Talent Acquisition Partner Manager -  
Professional & Executive Search  
Monique Burke

Talent Acquisition Manager - Early Career  
& Experienced Hires  
Melissa Waggoner

- Talent Acquisition Partner  
Eric Noll
- Talent Acquisition Partner  
Alex Smart
- Talent Acquisition Partner  
Rachel Monasterio
- Talent Acquisition Partner  
Gloria Young
- Talent Acquisition Partner  
Gina Santucci
- Talent Acquisition Partner  
Ivy Wong
- Talent Acquisition Partner  
Rebeca Sepulveda
- Talent Acquisition Partner  
Ellery Rogers
- Talent Acquisition Partner  
Sasha Zayed

- Talent Acquisition Partner Associate  
Catherine Brown
- Talent Acquisition Partner Associate  
Geoffrey Yang
- Talent Acquisition Partner Associate  
Kiarri Tomek
- Talent Acquisition Partner Associate  
Alex Smith
- Talent Acquisition Partner Associate  
Stacey Artisuk
- Talent Acquisition Coordinator  
Ann Louis Catalla Glorioso
- Talent Acquisition Coordinator  
Dominique Weddington
- Talent Acquisition Coordinator  
Open

