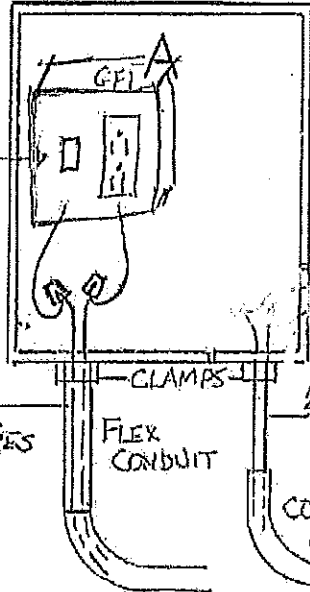
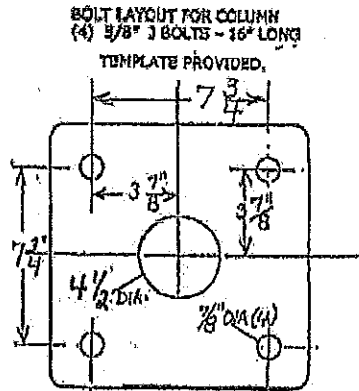


POWER CONSUMPTION
 200 WATTS - 120 VAC
 300 WATTS - WITH HEATER ←



USE WIRE NUTS FOR ELECTRICAL
 1 - COAX Belden 533945
 2 - CAT5E Belden 7997A

PLC 8 11" Sq. S.S. COLUMN

PROVIDE ABOUT 18" LENGTH OF PVC COATED FLEXIBLE CONDUIT FROM ELECTRICAL CONDUIT IN BASE TO CONNECTION BOX IN COLUMN. COLUMN IS PRE-WIRED.

RAMTEL CORP,
 115 Railroad Ave,
 Johnston, R.I. 02919
 401-231-3340

20" SQ. CONCRETE COLUMN BASE SHALL BE SURROUNDED BY UNDISTURBED SOIL OR BACK FILL COMPACTED TO 95% DENSITY OF SURROUNDING UNDISTURBED SOIL.

RAMTEL CORP.
 115 Railroad Ave.
 Johnston, RI 02919
 401-231-3340

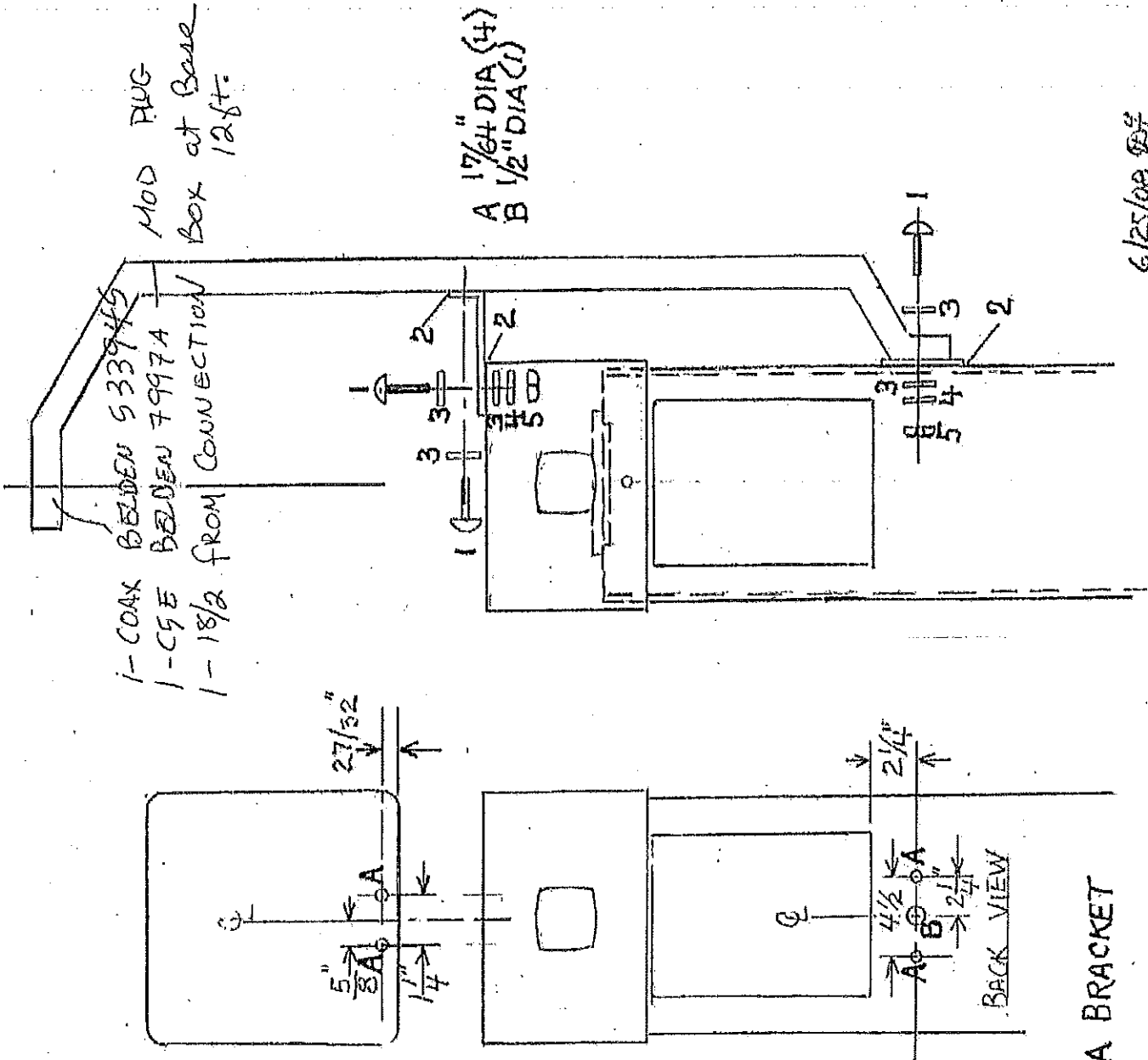
To Assemble Camera Bracket:

- 1) Remove Column Cap (2 screws)
- 2) Lift out Area Light Assembly
- 3) Remove 4 screws that hold Strobe Light plate to Column (Strobe light stays assembled to plate)
- 4) Camera Mount attaches below Strobe Light (2 screws)
- 5) Angle Bracket
 2" X 5 3/4" Screws (4) to Cap & Camera Mount with Gaskets.

- 1 1/4-20 TAMPER PROOF
 SCREWS (6)
- 2 RUBBER GASKETS (3)
- 3 WASHERS (10)
- 4 LOCK WASHERS (4)

800-1127

**PLC8 ACA CAMERA BRACKET
 ASSEMBLY**



6/25/08