

AWARDS

- *Constance Campbell Memorial Research Awards and Travel Awards*

TRAINEE OPPORTUNITIES

- *Career Hub*
- *Networking and outreach activities*
- *Research presentations*
- *Summit Trainee Committee*

CRS MEMBERS

- *Over 200 faculty, 50 staff members, and 100 trainees from over 17 disciplines*
- *Advisory Board, Affiliate Members from 5 Local Universities, and a Large Network of Alumni*

CRS LEADERSHIP

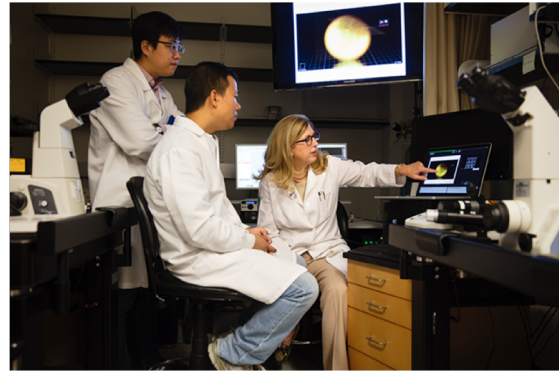
Co-Directors:

Francesca E. Duncan, PhD
J. Julie Kim, PhD

Graduate students in the Reproductive Science and Medicine Cluster at Northwestern University can elect reproductive-focused courses offered through the Center for Reproductive Science (CRS). They also have full access to a wide variety of programming, events, and services offered through the CRS.

REPRODUCTIVE SCIENCE COURSES

- **REPR_SCI 405: Female Reproductive Physiology and Endocrinology**
- **REPR_SCI 407: Male Reproductive Physiology and Endocrinology**
- **REPR_SCI 406: Human Reproductive Development**
- **REPR_SCI 420: Human Reproductive Health and Disease**



PROGRAMMING & EVENTS

- **Weekly Reproductive Research Updates**
 - *Present your research across campuses*
- **Translational Lectures in Reproductive Science**
 - *Seminars from luminaries in the field*
- **Career Catalyst Series**
 - *Learn new skills and discover career options*
- **Reproductive Science and Medicine Summit**
 - *Submit an abstract and present a poster*
- **Illinois Symposium on Reproductive Science (ISRS)**
 - *Network with local universities*

**Visit Planit-Purple
for our current schedule of events!**

STAY CONNECTED!

crs@northwestern.edu
Facebook.com/NUCenterforReproSci
@NU_CRS

Northwestern
University

Center for Reproductive Science
645 N. Michigan Ave., Suite 630
Chicago, IL 60611
www.crs.northwestern.edu