



# Northwestern University

**Public Events**  
June 2021

***Subscribe*** to this publication by emailing NCR at  
[NCR@northwestern.edu](mailto:NCR@northwestern.edu)

# Table of Contents

## Overview

Highlighted Events.....	3
-------------------------	---

## Northwestern Events

### Arts

Art Exhibitions.....	6
Art Discussions .....	6
Theater.....	7

Speakers and Presentations .....	8
----------------------------------	---

### Living

Leisure and Social .....	10
<i>Norris Mini Courses</i> .....	10
<i>Around Campus</i> .....	10
<i>Northwestern Music Academy</i> .....	11
<i>Norris Outdoors</i> .....	11
Religious Services .....	12

### Sports, Health, and Wellness

Recreation .....	13
------------------	----

### Evanston Campus Map and Parking Information

Northwestern | NEIGHBORHOOD AND  
COMMUNITY RELATIONS

#### **Neighborhood and Community Relations**

1800 Sherman Ave., Suite 7-100

Evanston, IL 60208

[www.northwestern.edu/communityrelations](http://www.northwestern.edu/communityrelations)

#### **Dave Davis**

Executive Director

[dave.davis@northwestern.edu](mailto:dave.davis@northwestern.edu)

847-491-8434

**To receive this publication electronically  
every month, please email NCR at  
[NCR@northwestern.edu](mailto:NCR@northwestern.edu)**

# Highlighted Events

June 2021

## Behold, Be Held

*When: Tuesday, 6/1/21-8/22/21, All Day*

*Where: Block Museum of Art, 40 Arts Circle Drive, Evanston, IL 60208*

*Cost: Free*

*Contact: Nancy Gelman, 847-491-2612*

While the past year has altered so much in our lives, it has also highlighted how art remains a vital window into our feelings and experiences. Behold, Be Held uses the facades of The Block, the neighboring Ethel M. Barber Theater, and the building of our community partner Youth & Opportunity United (Y.O.U.) as an outdoor gallery. Reproductions of artworks from the Block Museum collection invite visitors to reflect on how art holds us through moments of crisis. These works capture gestures that we may have taken for granted prior to the pandemic, but we have missed dearly. The selection of works was guided by themes of self-care, self-authorship, and community. It also explores how subtle moments with others prepare and carry us on our journeys.



## Black Stand-up Comics in Chicago: Navigating a Changing City (1955-1970)

*When: Wednesday, 6/2/21, 5:00PM-6:00PM (CT)*

*Where: Online*

*Cost: Free*

*Contact: Amy Danzer, 847-491-3051, a-danzer@northwestern.edu*

In this talk, Professor Gerald Butters will offer an overview of his upcoming online course "Black Activism in Chicago" (Summer 2021). Butters will discuss the game-changing impact that the Civil Rights Movement had on Black stand-up comics in Chicago from 1955-1970. Comedians found that many established Black-dominated clubs and theaters were closing while other venues were becoming desegregated and welcoming Black artists but often with a caveat - they needed to change their material. The careers of Moms Mabley, Nipsey Russell, and Bill Cosby

with be analyzed in relation to their comedy and how they navigated this rapidly changing landscape.

## Imagine U Storytime: "Why is the Sea Salty? – A Folk Tale"

*When: Sunday, 6/6/21, All Day*

*Where: Online*

*Cost: Free*

*Contact: Wirtz Center, 847-491-7282, wirtz@northwestern.edu*

Martin and Kouba are brothers by blood, but their personalities could not be more different. One is greedy, the other one as selfless as one can be. And then a devil and an old grinder enter the story. How do these four explain why the sea is salty? Join us to find out!



## The Annual Waa-Mu Show: The Secret of Camp Elliott

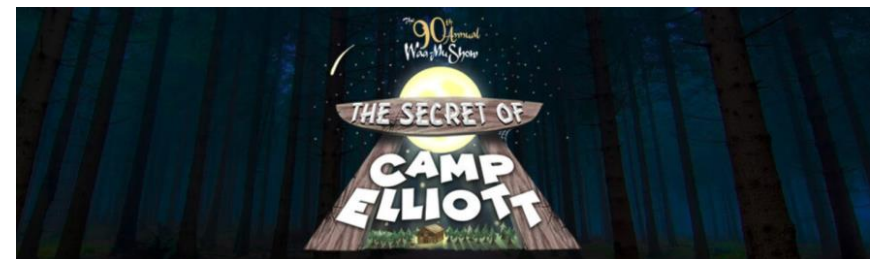
*When: Wednesday, 6/9/21-6/20/21, All Day*

*Where: Online*

*Cost: \$20*

*Contact: Wirtz Center, 847-491-7282, wirtz@northwestern.edu*

The outdoors, some friendly competition, and... a conspiracy? In the Summer of 1977, three best friends arrive for their first summer of fun at Camp Elliott, where all the campers are divided into two teams which will go head-to-head in a series of challenges in order to win Camp Elliott's annual competition. Throughout the summer, these campers seek out victory, love, and liberation, but they soon discover that not everything is as it seems. When camp becomes the location for some very mysterious and seemingly supernatural events, they must put aside their differences in order to unveil THE SECRET OF CAMP ELLIOTT!





### Queer Conditions/Kuir Haller: Social and Political Change in an Age of Authoritarianism

*When: Friday, 6/4/21, 9:30AM-1:30PM (CT)*

*Friday, 6/11/21, 9:30AM-1:30PM (CT)*

*Friday, 6/18/21, 9:30AM-1:30PM (CT)*

*Where: Online*

*Contact: Gina Stec, 847-467-2359, [gina.stec@northwestern.edu](mailto:gina.stec@northwestern.edu)*

Each year, the Keyman Modern Turkish Studies Program brings together scholars from around the world to discuss some of the most pressing issues facing Turkey from a global perspective. This year the conference's focus will be on Queer and Gender Studies. The primary aim of the conference is to engage with the global debate taking place on intersectionality. More specifically, we are interested in analyzing the role of gender identity and dynamics in facilitating the reproduction of power structures, and in the mobilization of historically marginalized groups seeking to expose, challenge, and ultimately dismantle those structures. By examining emergent forms of these justice-seeking struggles, the conference this year will direct the scholarly gaze on shifting relationships and opportunities for political action in a deeply polarized Turkey.



### State of the Pandemic: What Youths and Their Families Need to Know As Vaccine Eligibility Expands

*When: Saturday, 6/5/21, 11:00AM-12:00PM (CT)*

*Where: Online*

*Contact: Araceli Estrada, 312-503-0691,*

*[Araceli.estrada@northwestern.edu](mailto:Araceli.estrada@northwestern.edu)*

Summer Youth Leadership Event. Youth of all ages are encouraged to attend for a chance to learn more about the current state of the pandemic, where Illinois is in the pandemic and what next steps will look like in the upcoming months. Youth will also have a chance to ask questions of our two expert doctors.

### Sailing Center Open for the 2021 Season

The Northwestern Sailing Center is now open for the 2021 season! Whether you're an experienced sailor or if you've never set sail, the Sailing Center has something for you. Equipment rentals, youth camps, and adult classes are available to the entire Northwestern community and the surrounding public. For more information, call 847-491-4142 or visit [northwesternsailing.com](http://northwesternsailing.com).

### Wildcat Sports Camp 2021

Northwestern Recreation is excited for the return of Wildcat Sport Camp! Girls and boys currently attending 1<sup>st</sup> – 6<sup>th</sup> grade (current 6<sup>th</sup> grade must be returning campers) are welcome to attend. Although camp may look different this year, our main priority is to provide a fun, safe, and healthy environment for all. Spots are still available for all sessions. Information, including session dates, COVID modifications, and registration information, can be found [here](#).

### NU Recreation Group Exercise Classes

*Where: Online*

*Cost: Free*

Stay fit and active even during the pandemic, from the comfort and safety of your home! Northwestern Recreation is offering virtual group exercise classes this winter. Classes like cardio, strength, yoga, ZUMBA, HIIT, Kickboxing, and BODYPUMP are online, and a list of instructors and times can be found [here](#). Registration is required and may be done on the website. More information is included in the Recreation chapter of this Events Listing.







# Arts

## Art Exhibitions

### Behold, Be Held

*When: Tuesday, 6/1/21, All Day (recurrent, daily)*

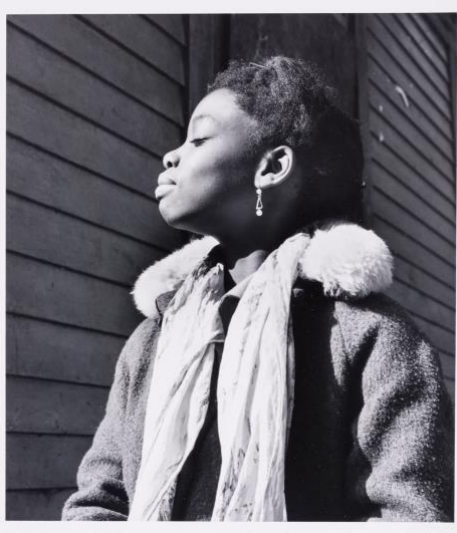
*Where: Block Museum of Art, 40 Arts Circle Drive, Evanston, IL 60208*

*Cost: Free*

*Contact: Nancy Gelman, 847-491-2612*

While the past year has altered so much in our lives, it has also highlighted how art remains a vital window into our feelings and experiences. Behold, Be Held uses the facades of The Block, the neighboring Ethel M. Barber Theater, and the building of our community partner Youth & Opportunity United (Y.O.U.) as an outdoor gallery.

Reproductions of artworks from the Block Museum collection invite visitors to reflect on how art holds us through moments of crisis. These works capture gestures that we may have taken for granted prior to the pandemic, but we have missed dearly. The selection of works was guided by themes of self-care, self-authorship, and community. It also explores how subtle moments with others prepare and carry us on our journeys.



## Art Discussions

### A Bruising Gaze on a Faltering Landscape

*When: Wednesday, 6/2/21, 1:00PM-5:00PM (CT) (recurrent, daily)*

*Where: Block Museum of Art, 40 Arts Circle Drive, Evanston, IL 60208*

*Cost: Free*

*Contact: Lindsay Bosch, Lindsay.bosch@northwestern.edu*

Secure in upholding a false notion pertaining to an archive built on absent concepts. The pairing of a familiar melancholic midwestern landscape with the hermeneutics of a preserved view of Jerusalem, combine to complicate the focus of what actually is being seen, and the implications of a gaze that has been compromised in the process. Through video, sound, sculpture, and installation; This exhibition brings in questions of perception, scene and seen, and whether this

gaze is one of warning or surveillance. *A Bruising Gaze on a Faltering Landscape* is the culminating thesis work of Shabtai Pinchevsky and Katherine Simone Reynolds, candidates of the 2021 MFA degree program in Art, Theory and Practice, Northwestern University.

### Black Stand-up Comics in Chicago: Navigating a Changing City (1955-1970)

*When: Wednesday, 6/2/21, 5:00PM-6:00PM (CT)*

*Where: Online*

*Cost: Free*

*Contact: Amy Danzer, 847-491-3051, a-danzer@northwestern.edu*

In this talk, Professor Gerald Butters will offer an overview of his upcoming online course "Black Activism in Chicago" (Summer 2021). Butters will discuss the game-changing impact that the Civil Rights Movement had on Black stand-up comics in Chicago from 1955-1970. Comedians found that many established Black-dominated clubs and theaters were closing while other venues were becoming desegregated and welcoming Black artists but often with a caveat - they needed to change their material. The careers of Moms Mabley, Nipsey Russell, and Bill Cosby will be analyzed in relation to their comedy and how they navigated this rapidly changing landscape.

### Dreaming Rivers, Weaving Collectives with Judah Attile, Cairo Clarke, and Han Heung

*When: Thursday, 6/3/21-6/4/21, All Day*

*Where: Online*

*Cost: Free*

*Contact: Melisa Stephen, 847-491-7360, womenscenter@northwestern.edu*

*Dreaming Rivers* (1989) elaborates and transforms a discourse opened by Black UK film workshop Sankofa Film and Video Collective in their 1980's discussion series, "Black Women and Representation". The three children of Miss T., a Black migrant woman from the Caribbean, gather at her deathbed. The film figures their lives and identities in their late mother's image, tracing fragmentation and difference across diasporic Black British subjectivities.

### 2021 Juneteenth Celebration: Art and Activism

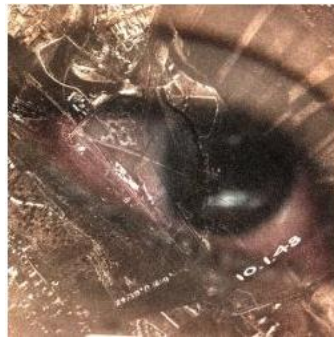
*When: Friday, 6/18/21, 12:00PM-1:30PM (CT)*

*Where: Online*

*Cost: Free*

*Contact: Araceli Estrada, 312-503-0691, Araceli.estrada@northwestern.edu*

Join us on June 18th, 2021 from 12 pm – 1:30 pm for our Juneteenth celebration, where we discuss different forms of modern and contemporary African American art, how it honors experiences of Black people, celebrates the Black identity, and serves as a catalyst for activism.



### Theatre

#### Flight of the Phoenix: A Celebration and Transformation

*When: Friday, 6/4/21-6/20/21, All Day*

*Where: Online*

*Cost: Free*

*Contact: Wirtz Center, 847-491-7282, wirtz@northwestern.edu*

As the world slowly emerges from the pain of this pandemic year, the Wirtz Center joyously presents The Flight of the Phoenix, a magical story of resilience, transformation, and artistic rebirth. This digital offering features a large-scale puppet spectacle filmed on Northwestern's glorious lake front and soaring above communities across the globe. Members of the NU community near and far will migrate a massive flock of blue and gold bird puppets, reenacting the journey of the mythical beast as it perishes dramatically in flames, only to burst forth from the fire, reborn to frolic across the sky and begin a new life.

#### Imagine U Storytime: "Why is the Sea Salty? – A Folk Tale"

*When: Sunday, 6/6/21, All Day*

*Where: Online*

*Cost: Free*

*Contact: Wirtz Center, 847-491-7282, wirtz@northwestern.edu*

Martin and Kouba are brothers by blood, but their personalities could not be more different. One is greedy, the other one as selfless as one can be. And then a devil and an old grinder enter the story. How do these four explain why the sea is salty? Join us to find out!



#### The Annual Waa-Mu Show: The Secret of Camp Elliott

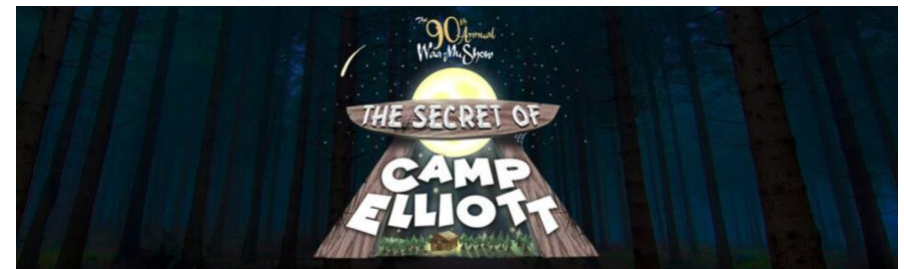
*When: Wednesday, 6/9/21-6/20/21, All Day*

*Where: Online*

*Cost: \$20*

*Contact: Wirtz Center, 847-491-7282, wirtz@northwestern.edu*

The outdoors, some friendly competition, and... a conspiracy? In the Summer of 1977, three best friends arrive for their first summer of fun at Camp Elliott, where all the campers are divided into two teams which will go head-to-head in a series of challenges in order to win Camp Elliott's annual competition. Throughout the summer, these campers seek out victory, love, and liberation, but they soon discover that not everything is as it seems. When camp becomes the location for some very mysterious and seemingly supernatural events, they must put aside their differences in order to unveil THE SECRET OF CAMP ELLIOTT!



# Speaker and Presentations

## Social Protection and Inequality in a Pandemic: Evidence from Ghana

*When: Tuesday, 6/2/21, 12:00PM-1:00PM (CT)*

*Where: Online*

*Contact: Dylan Peterson, 847-467-2770,  
buffettinstitute@northwestern.edu*

Chris Udry: Robert E. and Emily King Professor of Economics at Northwestern University. He is a development economist whose research focuses on rural economic activity in Sub-Saharan Africa. Robert Darko Osei: Associate Professor in the Institute of Statistical, Social and Economic Research (ISSER), University of Ghana, Legon, and also the Vice Dean for the School of Graduate Studies at the University of Ghana. His main areas of research include evaluative poverty and rural research, macro and micro implications of fiscal policies, aid effectiveness and other economic development policy concerns.

## Social Media and Religious Authority in the Gulf Crisis

*When: Friday, 6/4/21, 10:00AM-11:00AM (CT)*

*Where: Online*

*Contact: Danny Postel, danny.postel@northwestern.edu*

Ibrahim N. Abusharif is an associate professor in residence in the Journalism and Strategic Communication Program at Northwestern University Qatar (NU-Q). His academic interests include the study of the intersections of religion and media, particularly digital media disruptions and religious authority. Recently his chapter on "Researching Digital Media and Islam in Africa: Recommending a Framework" has been published in *The Palgrave Handbook on Islam in Africa* edited by Fallou Ngom, Mustapha H. Kurfi, and Toyin Falola (2021). He also researches the origins, promulgation, and effects of key journalistic framing terminologies used in prominent Western print news sources for Middle East events and ongoing affairs. (As an example, you may access here Parsing "Arab Spring," a study of the phrase "Arab Spring," its implications, usages, spread, and origins.) Currently, he is examining the usages of "Salafism" and "Islamism" in popular media and in academia.

## Queer Conditions/Kuir Haller: Social and Political Change in an Age of Authoritarianism

*When: Friday, 6/4/21, 9:30AM-1:30PM (CT)*

*Friday, 6/11/21, 9:30AM-1:30PM (CT)*

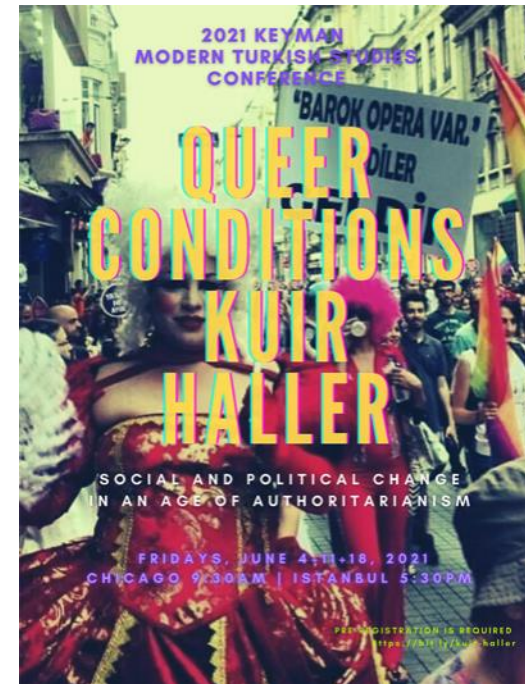
*Friday, 6/18/21, 9:30AM-1:30PM (CT)*

*Where: Online*

*Contact: Gina Stec, 847-467-2359, gina.stec@northwestern.edu*

Each year, the Keyman Modern Turkish Studies Program brings together scholars from around the world to discuss some of the most pressing issues facing Turkey from a global perspective. This year the conference's focus will be on Queer and

Gender Studies. The primary aim of the conference is to engage with the global debate taking place on intersectionality. More specifically, we are interested in analyzing the role of gender identity and dynamics in facilitating the reproduction of power structures, and in the mobilization of historically marginalized groups seeking to expose, challenge, and ultimately dismantle those structures. By examining emergent forms of these justice-seeking struggles, the conference this year will direct the scholarly gaze on shifting relationships and opportunities for political action in a deeply polarized Turkey.



## State of the Pandemic: What Youths and Their Families Need to Know As Vaccine Eligibility Expands

*When: Saturday, 6/5/21, 11:00AM-12:00PM (CT)*

*Where: Online*

*Contact: Araceli Estrada, 312-503-0691,  
Araceli.estrada@northwestern.edu*

Summer Youth Leadership Event. Youth of all ages are encouraged to attend for a chance to learn more about the current state of the pandemic, where Illinois is in the pandemic and what next steps will look like in the upcoming months. Youth will also have a chance to ask questions of our two expert doctors.



### CIERA Astronomy LIVE

*When: Friday, 6/25/21, 7:00PM-8:00PM (CT)*

*Where: Online*

*Contact: CIERA Astrophysics, 847-491-8646, CIERA-Events@northwestern.edu*

CIERA Astronomy LIVE brings Northwestern astronomers to the public in an interactive online format. Trivia, short presentations and interviews, and plenty of opportunity to ask questions, make these events fun and accessible for everyone. Like an open mic night, each LIVE event is different! Come hang out and chat about the Universe.



# Leisure and Social

## Norris University Center Mini Courses

These weekly recurrent mini courses are great to attend with friends to learn a new skill! All courses are virtual and free to sign up for. Supplies are available for purchase and pick up starting on Tuesday, January 19<sup>th</sup> in ARTica Studios. For more information, please contact the Mini Courses Department at [minicourses@u.northwestern.edu](mailto:minicourses@u.northwestern.edu) or 847-467-7112.

\*Spring sessions are finished for the year. Please check back in August for Fall listings.

## Around Campus

### NU China Care Playgroup/Mentorship Events

*When: Saturdays (Date TBD)*

*Where: Online*

*Contact: Grace Liu, [graceliu2023@u.northwestern.edu](mailto:graceliu2023@u.northwestern.edu)*

China Care is an independent, student-run Northwestern service club dedicated to supporting and contributing to the lives of Chinese children in the Chicagoland area. However, **all families** interested in learning about Chinese culture are encouraged to partake in the events. China Care club members host playgroups events that consist of a variety of cultural activities (cooking lessons, arts-and-crafts, games) and educational lessons based on different aspects of Chinese culture, ranging from Chinese history to Asian foods. China Care families are also encouraged to apply for a college mentor for their child through the NU China Care Mentorship Program. Please visit the China Care website to learn more about the organization or email Grace to sign up for the China Care listserv—where you will receive regular newsletter updates of upcoming events.



### CIERA Astronomy LIVE

*When: Friday, 5/28/21, 7:00PM-8:00PM (CT)*

*Where: Online*

*Contact: CIERA Astrophysics, 847-491-8646,*

*[CIERA-Events@northwestern.edu](mailto:CIERA-Events@northwestern.edu)*

CIERA Astronomy LIVE brings Northwestern astronomers to the public in an interactive online format. Trivia, short presentations and interviews, and plenty of opportunity to ask questions, make these events fun and accessible for everyone. Like an open mic night, each LIVE event is different! Come hang out and chat about the Universe

### Community Council for International Students (CCIS)

*Where: The International Office, 630 Dartmouth Place, Evanston*

*Contact: Norman Axelrad, [normaxe29@gmail.com](mailto:normaxe29@gmail.com), 847-673-6727*

*Sylvia Alvino, [sylalvino@yahoo.com](mailto:sylalvino@yahoo.com), 847-328-7516*

CCIS is continuously looking for local volunteers who may be alums, neighbors, retired, or merely interested in meeting young people from other countries. CCIS has a series of personalized informal cultural immersion programs provided by local volunteers who meet with Northwestern University international graduate students, visiting scholars, post-doctoral fellows, and their families. We are also looking for a few good volunteers with business experience in areas including marketing, writing, photography, public relations, planning, and technology to support our ongoing activities. Apply at <https://tinyurl.com/ccisvolunteer>

### The Alumnae of Northwestern University

The Alumnae offers intellectually stimulating, noncredit courses to the public at a modest cost. Each year more than 3,000 people enroll in these courses, taught virtually during COVID-19 by renowned University faculty.

For more information about upcoming courses, visit The Alumnae website

[www.nualumnae.org](http://www.nualumnae.org).

### Purple Pantry

*When: Thursdays (weekly), 11:00 AM to 2:00 PM (Central)*

*Where: Sheil Catholic Center, 2110 Sheridan Rd., Evanston*

Individuals experiencing difficulty accessing food can schedule individual appointments for use of the pantry both during and outside the designated time. The Purple Pantry is intended to be as barrier-free as possible, so it accommodates individuals with vegetarian, vegan, gluten-free, kosher, and halal dietary needs. Appointments for use of the pantry are required. For questions, to schedule an individual appointment, or to suggest produce to meet your dietary restriction, please email [purplepantry@northwestern.edu](mailto:purplepantry@northwestern.edu).

**Northwestern Music Academy**  
**[Learn more online](#)**



For more than 70 years, Northwestern University's Music Academy in Evanston has provided music instruction to children and adult students from surrounding communities and the greater Chicago and Northwest Indiana area.

Most Academy instructors also teach in the Henry and Leigh Bienen School of Music and hold masters and doctoral degrees in music teaching and performance. The Academy often serves as a teaching laboratory for college students enrolled in pedagogy courses and is a member of the National Guild of Community Schools of the Arts.

**Kindermusik** (newborn to age 7)

*Where: Online*

*Dates: Term starts Jan. 30 and ends May 15*

*Cost: \$300-355 (15-week class and home materials)*

This 45-minute class is a lovely way for young children and parents to interact. Multi-level activities that are appropriate for each stage of a child's development give lap babies, crawlers, and walkers a chance to explore music, touch, sound, and movement. Home materials including a CD, a book related to the theme of the unit, and an instrument provide additional ideas for sharing the class experience at home.

**Other Courses**

(offered virtually Spring Quarter)

**Piano and Organ**

The Music Academy Piano Division offers pre-piano class, which serves as an introduction to more formal piano instruction: keyboard instruction in two tracks for students ages 6 to 18, and instruction for adults. Pre-piano serves as an introduction to more formal piano instruction. Keyboard instruction for children begins with pre-staff music and expands to landmark-based intervallic reading. After the first year of study, most children participate in the Illinois State Music Teacher's Association curriculum assessment, where they demonstrate skills and receive certificates and pins for participation.

**Strings**

The String Division offers private lessons in violin, viola, and cello, with goals of both providing musical instruction and instilling a love of music and of learning music. The division believes that all children can learn to their potential when placed in an environment that includes clear instruction, an involved parent, and regular opportunities to listen to and perform.

**Voice (Adults)**

The Music Academy has canceled chorus rehearsals and voice classes for spring 2021.

**Norris Outdoors**



Norris University Center offers a wide range of equipment available to rent for your outdoor adventures including:

- camping equipment (tents, backpacks, etc.)
- grills and stoves sports gear (Frisbees, volleyball and net, etc.)

Visit Norris Outdoors for package deals and a full list of equipment. The office is open Monday to Sunday, 12:30 – 6:00 PM, or at 847-491-2345. They can also be found at [www.northwestern.edu/norris/arts-and-recreation/norrisoutdoors](http://www.northwestern.edu/norris/arts-and-recreation/norrisoutdoors) or on Facebook and Twitter. Items must be requested at least 5 days in advance.



# Religious Services

Northwestern is proud to have a vibrant community embracing diverse religious beliefs. We have regular services on campus as well as events for religious observances. For general inquiries, contact the Office of Religious and Spiritual Life at 847-491-7256 located at 1870 Sheridan Rd. on our Evanston campus.

## Christian – Nondenominational

University Bible Fellowship hosts nondenominational Christian worship service on Sundays from 11:00AM–1:00 PM Central. Join the UBF community on Facebook Live for fellowship, singing, prayer, and preaching. Click [here](#) for more information about registration.

## Christian – Protestant

Christian worship in a broad Protestant tradition is held most Sundays of the academic year at 11:00 AM – 12:00 PM virtually. Click [here](#) for more information about registration.

## Christian – Catholic

Daily Mass is celebrated Mondays to Fridays at 5:00–5:30 PM, On Sundays, Masses are held at 9:00–10:00 AM, 11:00AM–12:00PM, and 5:00–6:00PM. Services are posted to the YouTube channel and you can watch and participate at a time convenient for you. Visit <http://www.sheil.northwestern.edu/> for a complete list of events.

## Jewish

The Fiedler Hillel leads virtual Reform and Conservative Shabbat services every Friday evening from 6:00 – 6:45 PM. A full list of events is at [www.northwesternhillel.org](http://www.northwesternhillel.org)

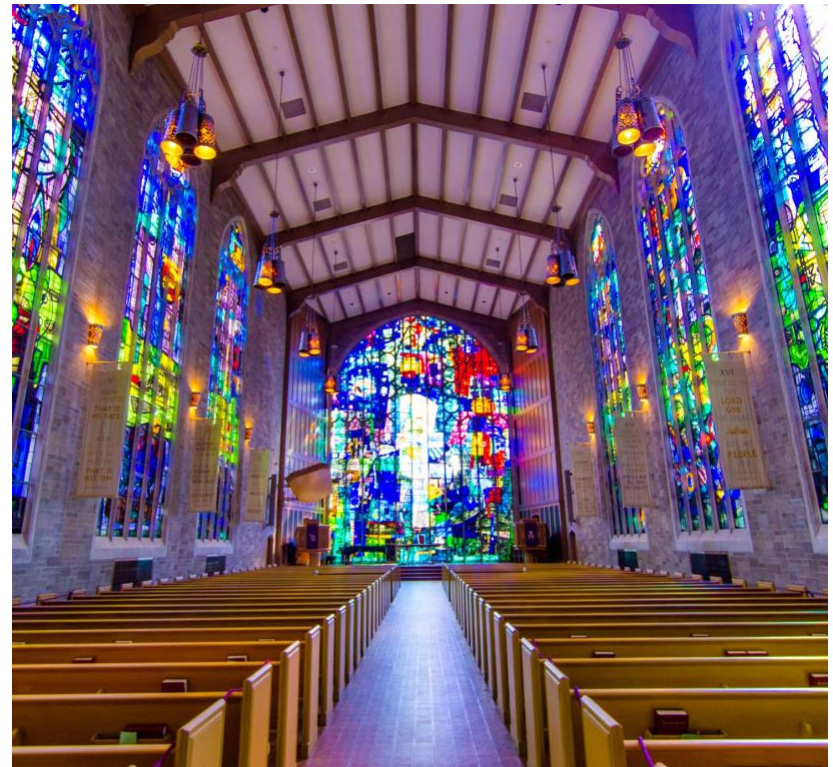
**Northwestern**  
**Hillel**

## Spirituality

Northwestern also offers opportunities for the community to engage in interfaith fellowship or spiritual exploration.

## Observances

- June 16: Martyrdom of Guru Arjan Dev Sahib (Sikh)
- June 24: Litha (Pagan and Wiccan)
- June 27: Fast of Tammuz (Judaism)



# Recreation

Northwestern Recreation offers opportunities to discover and maintain a healthy lifestyle to members of our community through a diverse array of recreational activities. A full list of activities can be found online at [www.nurecreation.com](http://www.nurecreation.com). For general questions, call 847-491-4303.

## Facilities

Membership to Northwestern Recreation offers access to a well-equipped facility with knowledgeable staff to assist you.

In addition to the highlighted offerings in this guide, the 95,000 square foot Henry Crown Sports Pavilion, Norris Aquatics Center, and Combe Tennis Center have space and amenities for all types of exercise, including: space to play team sports like basketball courts, group exercise, cardiovascular equipment, strength and weight-training equipment, an Olympic-sized pool, and a wellness suite for fitness assessments and massage.

On top of the benefits from membership to Northwestern Recreation, there are even more ways to be healthy. Additional fees apply for personal training, private courses, massage, and the pro shop.

## Location and Hours\*

The Henry Crown Sports Pavilion, which links to other facilities in Northwestern Recreation, is at 2311 Campus Drive, Evanston. Ample parking is available at the North Campus Parking Garage.

Hours for Henry Crown Sports Pavilion (hours during academic breaks differ, and hours for the pool and other areas vary):

Monday – Friday	7:00 AM – 9:00 PM
Saturday	10:00 AM – 4:00 PM
Sunday	10:00 AM – 4:00 PM

**\* Due to COVID-19, access available to faculty and staff members and students welcomed back to campus only.**

## Membership

Community members, Northwestern employees, and university alumni are invited to join. There is a one-time registration fee per household of \$100.

Type	Annual	Monthly	Day passes before 3 pm	Day passes after 3 pm and weekends
Individual	\$500	\$52	\$12	\$18
Spouse	\$500	\$52	\$12	\$18
Child (each)	\$260	\$32	\$9 \$0 (under 6)	\$16 \$0 (under 6)

Rates for Northwestern faculty, staff, and their families:

Type	Annual	Monthly	Day passes before 3 pm	Day passes after 3 pm and weekends
Employee	\$400	\$44	\$9	\$16
Employee spouse	\$400	\$44	\$9	\$16
Employee child	\$260	\$32	\$9 \$0 (under 6)	\$16 \$0 (under 6)

Join Northwestern Recreation online at [www.nurecreation.com/membership](http://www.nurecreation.com/membership), by calling the membership office at 847-491-4303, or in person. Children 15 years old and under must be accompanied by a parent, and the child rate only applies if the parent is also a member. Complimentary trial memberships for one week are available upon request. Payment is accepted by cash, check, or credit card.

## Complimentary Pass

We are delighted to offer the opportunity to request a complimentary pass. The trial membership pass provides access to recreation facilities, including the Norris Aquatics Center, and programs, including Group Exercise classes. Beach access is also provided (May – September, weather permitting). This offer is open to first time users. Visit [nurecreation.com/freetrial](http://nurecreation.com/freetrial) for free trial pass guidelines.

## Open Recreational Tennis

- *Indoor Courts* – Not available at this time.
- *Outdoor Courts* – Fifteen outdoor courts are available at the [Vandy Christie Tennis Center](#).
- *Daily Court Reservations* – Not available at this time.
- *Permanent Court Time Reservations* – Not available at this time.

## Swimming

Contact: Ed Martig, [e-martig@northwestern.edu](mailto:e-martig@northwestern.edu)

The Norris Aquatics Center is only open to staff and faculty members and Northwestern Students welcomed back to campus. Due to COVID-19, winter swim lessons are canceled.

### Special Offers

#### **White Light Therapy**

White Light Therapy has returned to the Henry Crown Sports Pavilion Wellness Suite. This service is free for Northwestern students, Henry Crown Sports Pavilion members, and massage clients. To make an appointment or for more information, call 847-467-2607 or visit the [Henry Crown Sports Pavilion Wellness Suite](#). Click [here](#) for more information.

#### **Massage Services**

Northwestern Massage Services is excited to offer [special massage therapy discounts](#) to help get you ready for summer! Let one of our massage therapists help you combat stress, release tension, and enhance your overall well-being. Learn more about our services, COVID-19 precaution measures, and purchasing information [here](#).

### Group Exercise Classes (Spring Quarter Schedule, 4/5/21 – 6/6/21)

Get your workout on with your favorite Northwestern instructors all summer long. Get your heart pumping with cardio kickboxing, Latin dance, Pilates, and more! In addition to [live and virtual class sessions](#), you can also participate on your own time with [Group Exercise On-demand](#). Take your favorite classes on your schedule, no matter where you are. Access is free, and new classes are added weekly.

Membership offers access to a variety of group exercise classes for free. Cardio, cycling, strength, yoga, and Pilates are online, while aqua fitness is at the Norris Aquatics Center. All virtual classes will be held via Zoom. Registration is required. For more specifics, please visit the NU Recreation website [here](#).

Time	Class	Location   Instructor
<b>Monday Classes</b>		
8:30 – 9:00 AM	ZUMBA Gold	Zoom   Sue
12:00 – 12:45 PM	Latin Dance	Studio 2   Ami
4:30 – 5:00 PM	Cardio Kickboxing	Zoom   Cerina
5:30 – 6:00 PM	Barre	Zoom   Jenna
6:30 – 7:00 PM	Pilates Yoga Fusion	Zoom   Julie S.
<b>Tuesday Classes</b>		
7:00 – 7:30 AM	Sunrise Yoga	Zoom   Chelsea
12:30 – 1:00 PM	Mindful Yoga	Zoom   Katherine
5:15 – 6:00 PM	Strength and Core	Studio 2   Beth

5:30 – 6:00 PM	ZUMBA	Zoom   Symphony
6:30 – 7:00 PM	Pilates	Zoom   Deanna
<b>Wednesday Classes</b>		
11:30 AM – 12:15 PM	Mat Pilates	Studio 2   Jenna
12:30 – 1:00 AM	BODYPUMP™	Zoom   Bev
5:30 – 6:00 PM	Latin Dance	Zoom   Ami
<b>Thursday Classes</b>		
9:00 – 9:45 AM	Pilates Yoga Fusion	Studio 2   Julie S.
12:30 – 1:00 PM	BODYPUMP	Zoom   Bev
5:30 – 6:00 PM	WERQ	Zoom   Spencer
6:30 – 7:00 PM	Energizing Yoga	Zoom   Chelsea
<b>Friday Classes</b>		
11:30 AM – 12:00 PM	BARRE	Zoom   Jenna
11:30 AM – 12:15 PM	Strength and Core	Studio 2   Beth
12:30 – 1:00 PM	HIIT & Core Conditioning	Zoom   Bev
5:30 – 6:00 PM	Mindful Yoga	Zoom   Katherine
<b>Saturday Classes</b>		
9:00 – 9:30 AM	BODYPUMP	Zoom   Bev
11:00 – 11:30 AM	WERQ	Zoom   Spencer
<b>Sunday Classes</b>		
10:00 – 10:30 AM	Pilates	Zoom   Jenna
11:00 – 11:30 AM	ZUMBA	Zoom   Symphony

### Summer



# Parking

## Evanston

### **Evanston Campus Parking Services**

1841 Sheridan Rd., Evanston  
847-491-3319  
parking@northwestern.edu  
www.northwestern.edu/up/parking  
Open Monday-Friday, 8:00 AM – 4:00 PM

Permits are required to park in all lots on the Evanston campus every Monday through Friday from 8:00 AM to 4:00 PM. No permits are required to park on the Evanston campus after 4:00 PM or on weekends, though reserved spaces require permits at all times.

The cost of a guest permit is \$8.25 for a non-refundable, all-day pass. Visitors and guests may purchase a visitor permit at the Parking Services Office (see above for address) or at pay stations located in the North and South Parking Garages.

While there are many scattered parking lots on campus, the largest for guests include:

#### To the North

- North Campus Parking Garage (has a parking pay station): 2311 N. Campus Drive
- LARC Drive: North Campus Drive
- Noyes/Haven/Sheridan Lot: Haven Street & Sheridan Rd.

#### To the South

- South Campus Parking Garage (has a parking pay station and it is next to the parking office): 1847 Campus Drive
- South Beach Structure: 1 Arts Circle Drive
- Locy and Fisk Lot: 1850 Campus Drive
- 619 Emerson Lot
- 515 Clark Street
- 1801/1813 Hinman

#### To the West

- 1940 Sheridan Road (Engelhart)
- 2020 Ridge North Lot (University Police)
- 1948 Ridge Lot (University Police)
- ITEC Lot: University Place & Oak Avenue

## Chicago

### **Chicago Campus Transportation and Parking**

710 N. Lakeshore Dr., Abbott Hall Room 100, Chicago  
312-503-1103  
chicagoparking@northwestern.edu  
www.northwestern.edu/transportation-parking  
Open Monday-Friday, 8:00 AM – 5:00 PM

There is no free parking available on the Chicago campus but there are several options available for guests.

Public garages or Northwestern garages open to the public include:

- 275 E. Chestnut Street
- 222 E. Huron Street
- 710 N. Lake Shore Drive
- 680 N. Lake Shore Drive
- 259 E. Erie Street
- 321 E. Erie Street
- 441 E. Ontario Street

If you are going to the Chicago campus as the guest of a department, volunteer, participant in a study, or as a hospital patient, you can also contact the organizer of your event to inquire about potential discounted parking validations or passes.

# Northwestern University Evanston, Illinois

LAKE  
MICHIGAN



- Parking
- Campus access road
- Service road (authorized vehicles only)
- Bicycle/pedestrian path
- CTA station
- Meza railroad station
- Emergency "Blue Light" telephones
- City Emergency "Blue Light" telephones (maintained by the city of Evanston)

# Northwestern University

## **Neighborhood and Community Relations**

1603 Orrington Avenue, Suite 1730

Evanston, IL 60201

[www.northwestern.edu/communityrelations](http://www.northwestern.edu/communityrelations)

## **Dave Davis**

Executive Director

[dave.davis@northwestern.edu](mailto:dave.davis@northwestern.edu)

847-467-5762

**To receive this publication electronically  
every month, please email NCR at  
[NCR@northwestern.edu](mailto:NCR@northwestern.edu)**

*Back cover image:* A window into a university for all seasons. Spring and architecture, summer and the Weber Arch, fall outside the Main Library, and Deering Library under a blanket of snow.





Northwestern University

18

NEIGHBORHOOD AND COMMUNITY RELATIONS