

Northwestern University

Public Events
August 2018

Subscribe to this publication by emailing Shayla Butler at
shayla.butler@northwestern.edu

Table of Contents

Overview

Highlighted Events.....	3
Starlight Movies Series.....	4

Northwestern Events

Arts and Performances.....	6
Living	
Leisure and Social	8
<i>Norris Mini Courses</i>	
<i>Around Campus</i>	
<i>ARTica (art studio)</i>	
<i>Norris Outdoors</i>	
Religious Services	10
Sports, Health, and Wellness	
Northwestern Wildcat Athletics.....	11
Recreation	14
Speaking Events	
One Book, One Northwestern: Margaret Atwood, <i>The Handmaid's Tale</i> ...	15
Speakers and Presentations	16
<i>Evanston Campus Map and Parking Information</i>	

Northwestern | NEIGHBORHOOD AND
COMMUNITY RELATIONS

Neighborhood and Community Relations

1603 Orrington Avenue, Suite 1730
Evanston, IL 60201
www.northwestern.edu/communityrelations

Alan Anderson

Executive Director
alan.anderson@northwestern.edu
847-467-5762

**To receive this publication electronically
every month, please email Shayla Butler at
shayla.butler@northwestern.edu**

Cover image

The Northwestern University Sailing Center

Highlighted Events

August 2018

Something in the Game: An All-American Musical

Fri, 7/20, to Sun, 8/5, times vary, ticket prices vary

Josephine Louis Theater, 20 Arts Circle Drive, Evanston

Contact: Box Office, wirtz@northwestern.edu, 847-491-7282

Legendary Notre Dame football coach Knute Rockne is regarded as one of America's greatest football coaches of all time, having brought the University to great prominence during his accomplished career with over 100 victories and five undefeated seasons. But as he chased fame and glory for his fighting Irish boys, he left his own family waiting on the sidelines. Multiple award-winners David H. Bell, Michael Mahler and Buddy Farmer team up to create a rousing and celebratory new musical about family sacrifice and one man's journey to discover what's most important in the "game of life."



Paul Chan: Happiness (Finally) After 35,000 Years of Civilization

Wed, 8/1 to Sun, 11/4 10:00 AM- 8:00 PM, free

Block Museum of Art, Mary and Leigh, 40 Arts Circle Drive, Evanston

Contact: Block Museum of Art, block-museum@northwestern.edu, 847-491-4000

Paul Chan (b. Hong Kong, 1973) is an American artist, activist, writer, and publisher. His work reflects a strong commitment to the relation of politics and aesthetics, philosophy and popular culture, art and grassroots activism. Created from 1999 to 2003, his first major artwork Happiness (Finally) After 35,000 Years of Civilization presents a 15-minute looped digital Flash animation inspired by as much by the history of utopian thought and the US invasion of Iraq as by Web 1.0 banner ads.

Block Museum Campus Art Walk

Wed, 8/8, 12:00-1:00 PM, free

Block Museum of Art, Mary and Leigh, 40 Arts Circle Drive, Evanston

Contact: Block Museum of Art, block-museum@northwestern.edu, 847-491-4000

16 extraordinary outdoor sculptures constitute a permanent public display maintained by the Block Museum of Art. Situated in proximity to the museum on Northwestern University's Evanston campus, with landscaping and placement designed by architect John Vinci, access to these artworks is free and open to all.



Dearborn Observatory Public Viewing

Fridays 10:00-11:00 PM, free

Dearborn Observatory, 2131 Tech Drive, Evanston

The Dearborn Observatory is open for public viewing every Friday night from 9 to 11 pm during the spring and summer months (Apr-Sept). The sessions are free and open to all. Reservations are required for the first hour but walk-ins are welcome in the second hour. All visitors should note that the dome is neither heated nor air-conditioned so please dress appropriately. Friday evening sessions are held "rain or shine."



tree-lined streets of Evanston. The event honors the late Northwestern Football head coach, Randy Walker.

Coming in September

Wildcat Football

Join our team as they face off against Purdue (8/30, away), Duke (9/8), Akron (9/15), and Michigan (9/29). Season and single-game tickets are now available [online](#).

'Kits, 'Cats, and Kids Block Party

Thurs, Sept 13, 4:45 – 7:30 PM

Sherman Ave between Church and Davis Streets

Kick off the school year with this rollicking free celebration of Evanston and Northwestern.

[Moana at Ryan Field](#)

Thurs, 8/2, 7:00 PM, free

Ryan Field, 1501 Central Street, Evanston

An adventurous teenager sails out on a daring mission to save her family. Along the way, Moana fulfills the ancient quest of her ancestors and discovers the one thing she always sought: her own identity. Bring your entire family out for a free movie night at Ryan Field. Rated PG



Starlight Movies in the Park Series

Moana is shown as part of the City of Evanston's *Starlight Movies in the Park* series. Admission is free and movies will be shown at dusk. The schedule is below:

Day/Date	Location	Movie
Thurs., Aug 2	Ryan Field, 1501 Central St.	<i>Moana</i>
Sat., Aug 4	Twiggs Park, Dodge Ave. at Simpson St.	<i>Black Panther</i>
Tues., Aug 7	Penny Park, Lake at Ashland	<i>Star Wars: The Last Jedi</i>
Sat., Aug 11	Robert Crown, 1701 Main St	<i>Kubo and the Two Strings</i>
Tues., Aug 14	Eggleston Park, McCormick Blvd. at Payne St.	<i>Monster Trucks</i>
Sat., Aug 18	Baker Park, Keeney St. at Forest Ave.	<i>A Wrinkle in Time</i>
Tues., Aug 21	Bent Park: Central St. at Cowper Ave.	<i>Wonder</i>
Sat., Aug 5	Arrington Lakefront Lagoon at Dawes Park, Sheridan Rd. at Church St.	<i>WonderWoman</i>
Sat., Sep 1	James Park, 300 Dodge Ave.	<i>Black Panther</i>





Arts and Performances



The Arts Circle. Your destination for the arts at Northwestern.

With world-class exhibitions and performances, the Arts Circle welcomes patrons, students, faculty, staff, alumni, and the larger community alike. It's easier than ever to take in many wonderful and diverse experiences, all on one campus.



Hank Willis Thomas: Unbranded

Tues, 5/1 to 8/5, 10:00 AM-5:00 PM, free
Block Museum of Art, Mary and Leigh, 40
Arts Circle Drive, Evanston
Contact: Lindsay Bosch,
lindsay.bosch@northwestern.edu



A practicing artist for over fifteen years, Hank Willis Thomas (American, b. 1976) has consistently explored American consumer culture, particularly as it relates to African-American subjects. His projects often appropriate imagery drawn from advertising campaigns to investigate the subtle and not so subtle ways in which this influential imagery reproduces and reinforces ideas about race and race relations. *Hank Willis Thomas: Unbranded* will consist of a tightly focused selection of approximately 40 photographs from two related bodies of works—the 2005-08 series *Unbranded: Reflections in Black by Corporate America* and the 2015 series *Unbranded: A Century of White Women 1915-2015*, which draw directly from the visual repertoire of American print advertising.

Something in the Game: An All-American Musical

Fri, 7/20, to Sun, 8/5, times vary, ticket prices vary
Josephine Louis Theater, 20 Arts Circle Drive, Evanston
Contact: Box Office, wirtz@northwestern.edu, 847-491-7282

Legendary Notre Dame football coach Knute Rockne is regarded as one of America's greatest football coaches of all time, having brought the University to great prominence during his accomplished career with over 100 victories and five undefeated seasons. But as he chased fame and glory for his fighting Irish boys, he left his own family waiting on the sidelines. Multiple award-winners David H. Bell, Michael Mahler and Buddy Farmer team up to create a rousing and celebratory new musical about family sacrifice and one man's journey to discover what's most important in the "game of life."



Northwestern University Prosthetics-Orthotics Program (NUPOC) Gallery-Paintings by Lenin Delsol

Wed, 8/1 to Mon, 9/3, 9:00 AM-4:45 PM, free
NUPOC, 680 North Lake Shore Drive, Suite 1100, Chicago

Contact: R.J. Garrick, r-garrick@northwestern.edu, 312-503-5700

Mr. Delsol interprets human figures in a narrative context, capturing his subjects' features, mood and character. He uses color and light to transform the human figure into a nearly palpable, sentient person. He is a member of the Portrait Society of America and the Oil Painters of America (OPA), and an awardee of the National Oil & Acrylic Painters' Society. Mr. Delsol is an instructor and member of the Board of Directors at the Palette and Chisel (Chicago). Mr. Delsol supports the development of other artists, monitoring open studios and offering guidance.



Paul Chan: Happiness (Finally) After 35,000 Years of Civilization

Wed, 8/1 to Sun, 11/4 10:00 AM- 8:00 PM, free

Block Museum of Art, Mary and Leigh, 40 Arts Circle Drive, Evanston

Contact: Block Museum of Art, block-museum@northwestern.edu, 847-491-4000

Paul Chan (b. Hong Kong, 1973) is an American artist, activist, writer, and publisher. His work reflects a strong commitment to the relation of politics and aesthetics, philosophy and popular culture, art and grassroots activism. Created from 1999 to 2003, his first major artwork Happiness (Finally) After 35,000 Years of Civilization presents a 15-minute looped digital Flash animation inspired by as much by the history of utopian thought and the US invasion of Iraq as by Web 1.0 banner ads.

Lunchtime Gallery Talk: Unbranded with curator Janet Dees

Wed, 8/1, 12:00-1:00 PM, free

Block Museum of Art, Mary and Leigh, 40 Arts Circle Drive, Evanston

Contact: Block Museum of Art, block-museum@northwestern.edu, 847-491-4000

Join exhibition curator Janet Dees, Steven and Lisa Munster, Tananbaum Curator of Modern and Contemporary Art, for a lunchtime tour and discussion of the exhibition.

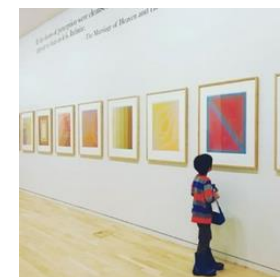
Family Program: Tales of Art at the Block

Fri, 8/3, 11:00 AM-12:30 PM, free

Block Museum of Art, Mary and Leigh, 40 Arts Circle Drive, Evanston

Contact: Block Museum of Art, block-museum@northwestern.edu, 847-491-4000

Museums are full of stories. Join us for a storytime plus family-friendly activities to look closer and think deeper about the art at the Block. Geared for children ages 3-8 but all are welcome. Space is limited and registration is required.



Block Museum Campus Art Walk

Wed, 8/8, 12:00-1:00 PM, free

Block Museum of Art, Mary and Leigh, 40 Arts Circle Drive, Evanston

Contact: Block Museum of Art, block-museum@northwestern.edu, 847-491-4000

16 extraordinary outdoor sculptures constitute a permanent public display maintained by the Block Museum of Art. Situated in proximity to the museum on Northwestern University's Evanston campus, with landscaping and placement designed by architect John Vinci, access to these artworks is free and open to all.



Full Spectrum Features presents: Chicagoland Shorts vol. 4

Thurs, 8/16, 7:00-8:30 PM, free

Block Museum of Art, Mary and Leigh, 40 Arts Circle Drive, Evanston

Contact: Block Museum of Art, block-museum@northwestern.edu, 847-491-4000

Inspired by this community's unparalleled diversity and artistic excellence, Full Spectrum Features has curated film work of women, people of color, and the LGBTQ+ community into Chicagoland Shorts, a traveling anthology and tribute to our city that will screen across Cook County and nationally from Seattle to New York. The filmmakers in Chicagoland Shorts Vol. 4 have screened their films at festivals such as Cannes, Tribeca, Sundance, Berlin, Vienna, Rotterdam, and Chicago International, and have won numerous awards. Their work spans many disciplines, including dance, experimental, and science fiction. The artists in our collection are diverse, prolific, genre-bending, and quintessentially Chicago.



Leisure and Social

Around Campus

Dearborn Observatory Public Viewing

Fridays, 9:00-11:00 PM Free

Dearborn Observatory, 2131 Tech Drive, Evanston

Contact: Yassaman Shemirani

847-491-7650, yassaman.shemirani@northwestern.edu

The Dearborn Observatory is open for public viewing every Friday night from 9 to 11 PM during the spring and summer months (Apr-Jul). The sessions are free and open to all. All visitors should note that the dome is neither heated nor air-conditioned so please dress appropriately. Friday evening sessions are held "rain or shine." Unfortunately, the Dearborn is not ADA-accessible. Several staircases must be climbed in order to reach the telescope.

CIERA Astronomer Evenings

Fri, Aug 24, 9:00 – 11:00 PM, free

Dearborn Observatory, 2131 Tech Drive, Evanston

Contact: CIERA-Events@northwestern.edu

After looking through the historic telescope, meet and talk with astronomers from CIERA, Northwestern's Center for Interdisciplinary Exploration and Research in Astrophysics! Each month they focus on a different astronomy topic related to their research & they are available to answer your questions. This is a special program provided on the final Friday of each month, as part of the weekly Dearborn Observatory public viewing sessions.

Cheap Lunch

Wednesdays, 12:00 PM – 1:30 PM, \$2 student/\$3 non-student

Sheil Catholic Center, 2110 Sheridan Rd., Evanston

Contact: Teresa Corcoran, t-corcoran@northwestern.edu, 847-328-4648

Join the fun for grilled hot dogs, brats, burgers, chips, soda, salad, and dessert for \$2 a student or \$3 for non-students.

Community Council for International Students (CCIS)

The International Office, 630 Dartmouth Place, Evanston

Contact: Sylvia Alvino, sylalvino@yahoo.com, 847-328-7516

Are you interested in volunteering to spend some time with an NU international student? CCIS is dedicated to helping NU students and pos-docs from other countries during their stay at NU. CCIS volunteers work toward a mutual sharing of values, cultural experiences, and interests. Please contact Sylvia Alvino for more information.

ARTica



The Norris University Center's craft shop offers the materials to make buttons, bind books, laminate, screen print, sew, and space to work on art projects. Quarterly ceramics memberships, including access to studios and 25 pounds of clay, are available for \$55 for Northwestern students and \$105 for the public. Visit www.artica.northwestern.edu for more details.

Norris Outdoors



Norris University Center offers a wide range of equipment available to rent for your outdoor adventures including:

- camping equipment (tents, backpacks, etc.)
- grills and stoves sports gear (Frisbees, volleyball and net, etc.)

Visit Norris Outdoors for package deals and a full list of equipment. The office is open Monday to Friday, 12:30 – 5:00 PM, or at 847-491-2345. They can also be found at www.northwestern.edu/norris/arts-and-recreation/norrisoutdoors or on Facebook and Twitter. Items must be requested at least 5 days in advance.

Northwestern Music Academy
[Learn more online](#)



Other Courses
(offered throughout the school year)

[Piano and Organ](#)

The Music Academy Piano Division offers pre-piano class, which serves as an introduction to more formal piano instruction: keyboard instruction in two tracks for students ages 6 to 18, and instruction for adults. Pre-piano serves as an introduction to more formal piano instruction. Keyboard instruction for children begins with pre-staff music and expands to landmark-based intervallic reading. After the first year of study, most children participate in the Illinois State Music Teacher's Association curriculum assessment, where they demonstrate skills and receive certificates and pins for participation.

[Strings](#)

The String Division offers private lessons in violin, viola, and cello, with goals of both providing musical instruction and instilling a love of music and of learning music. The division believes that all children can learn to their potential when placed in an environment that includes clear instruction, an involved parent, and regular opportunities to listen to and perform.

[Voice](#) (adults)

Adult voice classes concentrate on basic vocal technique including registers, breathing, range, and diction. Unique teaching methods and small class size (4 to 5 students) produce good results after a short period of time. The class is recommended not only for people interested in singing, but also for adults who would like to improve their speaking voice. Private voice lessons also available



Religious Services

Northwestern is proud to have a vibrant community embracing diverse religious beliefs. We have regular services on campus as well as events for religious observances. For general inquiries, contact the Office of Religious and Spiritual Life at 847-491-7256 located at 1870 Sheridan Rd. on our Evanston campus.

Christian – Protestant

Christian worship in a broad Protestant tradition is held most Sundays of the academic year at 11:00 AM – 12:00 PM at the Alice Millar Chapel, 1870 Sheridan Rd.

Christian – Catholic

Daily Mass is celebrated Mondays to Fridays at 5:00–5:30 PM, On Sundays, Masses are held at 9:30–10:30 AM, 11:00 AM–12:00 PM, 5:00–6:00 PM, and 9:00–10:00 PM, Services are at the Sheil Catholic Center Chapel, 2110 Sheridan Rd. Sheil also offers other sacraments, prayers, fellowship, and retreats. Visit <http://www.sheil.northwestern.edu/> for a complete list of events.

Jewish

The Fiedler Hillel leads Reform and Conservative Shabbat services every Friday evening from 6:00 – 7:00 PM, followed by a free dinner, at 629 Foster Street. Orthodox services are held at the same place on Saturday mornings from 9:30 – 10:30 AM. A full list of events is at www.northwesternhillel.org

Northwestern
Hillel

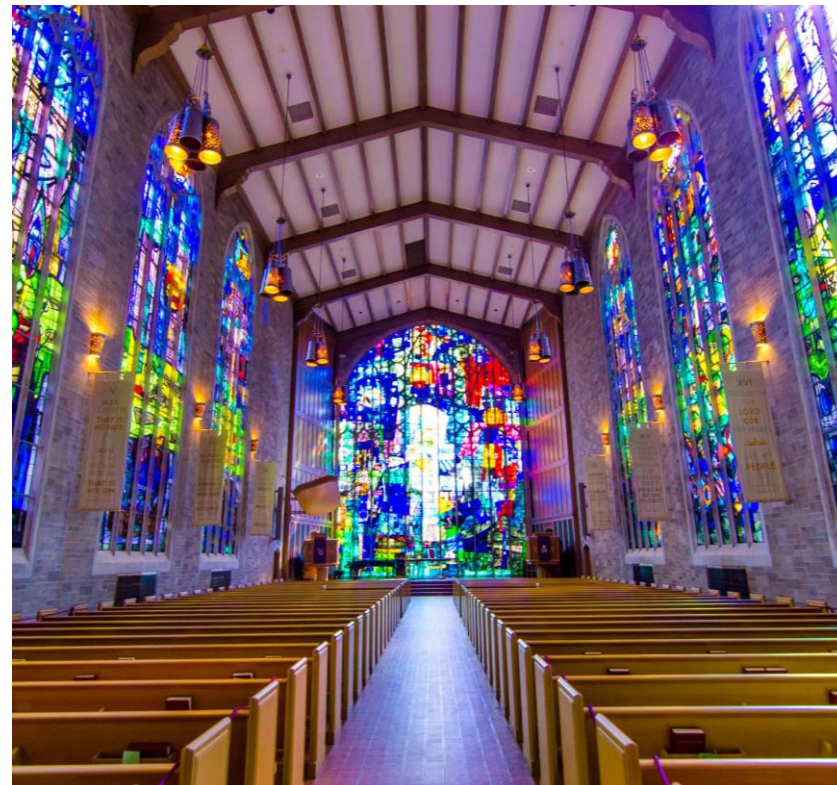
Muslim

Jumah, Muslim prayers on Fridays, are held every Friday from 1:10 – 2:00 PM, On the Evanston campus, Jumah is at Parkes Hall, 1870 Sheridan Rd., Room 122. In Chicago, it is at the Lurie Building, 303 E. Superior, in the Grey Seminar Room.

Contact: Jill Norton, jill-brazel@northwestern.edu

Spirituality

Northwestern also offers opportunities for the community to engage in interfaith fellowship or spiritual exploration.



Northwestern Wildcat Athletics

The Northwestern Wildcats are Chicago's Big Ten team. Come cheer on the Wildcats at home or on the road.

Sports in season this fall are:

- cross country – women's
- field hockey – women's
- football – men's
- soccer – men's
- soccer – women's
- volleyball – women's

There are two easy ways to purchase tickets, listed below. Tickets are typically mailed two to three weeks prior to a home event unless the will call delivery method is selected.

- Online at www.nusports.com
- Calling or visiting the ticket office at 888-467-8775, Monday to Fridays from 9:00 AM – 5:00 PM

You can also email the office at cat-tix@northwestern.edu and follow them on Twitter using the handle @NU_Tickets.



Field Hockey

Tickets are typically \$7 for adults, \$3 per person for groups of 15 or more, and \$5 for youth. Home games are at the Lanny and Sharon Martin Stadium, 2235 Campus Drive, Evanston.



Date and Time	Game
8/18, 12 PM	Iowa (scrimmage)
8/24, 12 PM	Connecticut
8/25, 1 PM	Stanford vs. UConn
8/26, 1 PM	Stanford
8/31, 3 PM	@ Duke
9/2, 10 AM	@ Boston College
9/4, 2 PM	@ Kent State
9/7, 12:00 PM	Miami (Ohio)
9/8, 11 AM	Boston U vs. Miami (Ohio)
9/9, 12 PM	Boston U
9/14, 2 PM	@ Indiana
9/16, 11 AM	@ Louisville
9/21, 12 PM	Iowa
9/22, 11:30 AM	Iowa vs. California
9/23, 11 AM	California
9/28, 4 PM	@ Michigan
9/30, 11 AM	@ Michigan State
10/5, 3 PM	Ohio State
10/12, 3 PM	Rutgers

Football

Home games are at Ryan Field, and the arena opens three hours before kick off. Please go online at www.nusports.com or call the ticket office at 888-467-8775 to ask about tickets.



Wildcats fans can purchase single-game tickets to Northwestern's seven regular-season contests immediately on Tuesday by calling 888-GO-PURPLE (888-467-8775) or at NUSports.com. Season tickets, the only way to guarantee the best seats at Ryan Field, are currently on sale here.

Groups of 15 or more can buy group tickets.

Date and Time	Game
8/30, 7:00 PM	@ Purdue
9/8, 11 AM	Duke
9/15, 6:30 PM	Akron
9/29, TBD	Michigan
10/6, 11 AM	@ Michigan State
10/13, 11 AM	Nebraska (Homecoming)
10/20, 11 AM	@ Rutgers
10/27, TBD	Wisconsin (Family Weekend)
11/3, TBD	Notre Dame
11/10, TBD	@ Iowa
11/17, TBD	@ Minnesota
11/24, TBD	Illinois



Soccer – Men's



Tickets are typically \$7 for adults, \$3 per person for groups of 15 or more, and \$5 for youth. Home games are at the Lanny and Sharon Martin Stadium, 2235 Campus Drive, Evanston.



Date and Time	Game
8/10, 6:30 PM	Alumni Game
8/14, 11 AM	@ Saint Joseph's
8/17, 6 PM	@ Villanova
8/24, 7 PM	Cleveland State
8/26, 3 PM	Xavier
9/1, 5 PM	@ Valparaiso
9/3, 1:30 PM	@ Fordham
9/7, 7 PM	@ Loyola
9/9, 6 PM	UMKC
9/14, 7 PM	Maryland
9/21, 6:30 PM	@ Ohio State
9/25, 6 PM	@ Indiana
9/29, TBD	Michigan
10/2, 7 PM	Notre Dame
10/6, 7 PM	Penn State
10/9, 7 PM	DePaul
10/12, 6 PM	@ Rutgers
10/16, TBD	@ UIC
10/19, 6 PM	@ Michigan State
10/24, 7 PM	Wisconsin
10/26, 7 PM	Concordia-Chicago

Soccer – Women's

Tickets are typically \$7 for adults, \$3 per person for groups of 15 or more, and \$5 for youth. Home games are at the Lanny and Sharon Martin Stadium, 2235 Campus Drive, Evanston.



Date and Time	Game
8/5, 4 PM	Loyola (exhibition)
8/10, 5 PM	@ DePaul (exhibition)
8/17, 3:30 PM	@ Miami Ohio
8/19, 11:30 AM	@ Wake Forest
8/24, 3 PM	@ Iowa State
8/26, 11 AM	@ West Virginia
8/30, 6:30 PM	@ Missouri
9/6, 7 PM	Loyola Marymount
9/9, 2:30 PM	Bowling Green
9/14, 7 PM	@ Wisconsin
9/16, 1 PM	@ Minnesota
9/20, 7 PM	Penn State
9/23, 12 PM	Ohio State
9/28, 7 PM	Michigan
10/4, 6 PM	@ Rutgers
10/7, 1 PM	@ Maryland
10/11, 7 PM	Indiana
10/14, 2:30 PM	Purdue
10/18, 7 PM	Illinois
10/21, 1 PM	@ Iowa

Volleyball – Women's

Tickets are typically \$7 for adults, \$3 per person for groups of 15 or more, and \$5 for youth. Home games this year will be held at Evanston Township High School while renovations take place at the Welsh-Ryan Arena.



Date and Time	Game
8/24, 10 AM	South Dakota @ Milwaukee, WI
8/24, 5 PM	New Hampshire @ Milwaukee, WI
8/25, 3 PM	@ Milwaukee
8/31, 11 AM	Princeton @ Hamilton, NY
8/31, 6 PM	Colgate @ Hamilton, NY
9/1, 1 PM	Stephen F Austin @ Hamilton, NY
9/7, 5 PM	Buffalo @ Fayetteville, AK
9/8, 10 AM	Butler @ Fayetteville, AK
9/8, 7 PM	Arkansas @ Fayetteville, AK
9/14, 4 PM	UIC @ Chicago, IL
9/15, 10 AM	DePaul @ Chicago, IL
9/15, 7 PM	Loyola-Chicago @ Chicago, IL
9/21, 6 PM	@ Indiana
9/28, 7 PM	Nebraska
9/30, 1 PM	Iowa
10/3, 7 PM	Minnesota
10/6, 7 PM	@ Illinois
10/12, 8 PM	@ Wisconsin
10/13, 7 PM	@ Minnesota
10/19, 7 PM	Michigan State
10/20, 7 PM	Michigan
10/24, 8 PM	@ Iowa
10/28, 1 PM	Ohio State
11/2, 6 PM	@ Maryland
11/9, 7 PM	Penn State
11/10, 7 PM	Rutgers
11/14, 7 PM	Illinois
11/17, 6 PM	@ Penn State
11/21, 6 PM	@ Michigan
11/23, 7 PM	Indiana

Recreation

Northwestern Recreation offers opportunities to discover and maintain a healthy lifestyle to members of our community through a diverse array of recreational activities. A full list of activities can be found online at www.nurecreation.com. For general questions, call 847-491-4300.

Facilities

Membership to Northwestern Recreation offers access to a well-equipped facility with knowledgeable staff to assist you.

In addition to the highlighted offerings in this guide, the 95,000 square foot Henry Crown Sports Pavilion, Norris Aquatics Center, and Combe Tennis Center have space and amenities for all types of exercise, including: space to play team sports like basketball courts, group exercise, cardiovascular equipment, strength and weight-training equipment, an Olympic-sized pool, and a wellness suite for fitness assessments and massage.

On top of the benefits from membership to Northwestern Recreation, there are even more ways to be healthy. Additional fees apply for personal training, private courses, massage, and the pro shop.

Location and Hours

The Henry Crown Sports Pavilion, which links to other facilities in Northwestern Recreation, is at 2311 Campus Drive, Evanston. Ample parking is available at the North Campus Parking Garage.

Hours for Henry Crown Sports Pavilion (hours during academic breaks differ, and hours for the pool and other areas vary):

Monday – Thursday	6:00 AM – 11:00 PM
Friday	6:00 AM – 10:00 PM
Saturday	8:00 AM – 9:00 PM
Sunday	8:00 AM – 10:00 PM

Membership

Community members, Northwestern employees, and university alumni are invited to join. There is a one-time registration fee per household of \$100.

Type	Annual	Monthly	Day passes before 3 pm	Day passes after 3 pm and weekends
Individual	\$480	\$46	\$12	\$18
Spouse	\$480	\$46	\$12	\$18
Child (each)	\$240	\$26	\$9 \$0 (under 6)	\$16 \$0 (under 6)

Rates for Northwestern faculty, staff, and their families:

Type	Annual	Monthly	Day passes before 3 pm	Day passes after 3 pm and weekends
Employee	\$384	\$38	\$9	\$16
Employee spouse	\$384	\$38	\$9	\$16
Employee child	\$240	\$26	\$9 \$0 (under 6)	\$16 \$0 (under 6)

Join Northwestern Recreation online at www.nurecreation.com/membership, by calling the membership office at 847-491-4303, or in person. Children 15 years old and under must be accompanied by a parent, and the child rate only applies if the parent is also a member. Complimentary trial memberships for one week are available upon request. Payment is accepted by cash, check, or credit card.

Intramurals

The intramural sports program strives to offer students, staff, and faculty opportunities to have fun. Over 2,000 unique participants and 25% student involvement every year makes the program enjoyable and while competitive. Fall intramurals are dodgeball, flag football, and volleyball. Winter has basketball and floor hockey. In the spring, there is soccer, softball, and ultimate Frisbee.

Tennis

- *Junior and Adult Lessons* – Throughout the year, group lessons are offered for all ages and skill levels. Private lessons for 1-2 people are also available.
- *USTA Teams* – Northwestern hosts 8 USTA league teams. They participate in weekly evening practice and compete in weekend matches against other clubs.
- *Open Court* – Reserve indoor courts for up to 1.5 hours any day of the week starting from 6:30 AM Monday to Friday or 8:00 AM on the weekends by calling 847-491-4312. Play time for indoor courts is unlimited as long as there is no one waiting to play. Outdoor courts are first-come-first-served.

One Book, One Northwestern

A full program of events will kick off in September for our new One Book One Northwestern selection, *The Handmaid's Tale*. For more information about the One Book One Northwestern program, please contact Nancy Cunniff at onebook@northwestern.edu or 847-467-2294.

***The Handmaid's Tale* by Margaret Atwood Selected for One Book Program 2018-2019**

"The Handmaid's Tale," a book set in a dystopian future in which the U.S. government has been overthrown by an authoritarian regime that uses fertile women as handmaids to bear children for the ruling class, is Northwestern University's One Book One Northwestern all-campus read for the 2018-19 academic year. The author of "The Handmaid's Tale," Margaret Atwood, will deliver a keynote address Oct. 30 at Northwestern on both campuses. All first-year students are given a copy of the One Book each year.

One Book One Northwestern is a community-wide reading program hosted by the Office of the President. It aims to engage the campus in a common conversation centered on a carefully chosen, thought-provoking book. It began in 2005 for students in the Weinberg College of Arts and Sciences and has since evolved into a community-wide program involving students, faculty and staff from all majors and departments.

Everyone is encouraged to read the One Book selection. The Office of the President sends a free copy to incoming first-year and transfer students the summer before they arrive on campus.

Throughout the year, events like lectures, films, and discussion groups provide an opportunity for individuals to gather and talk about the issues presented in the book. Many of these events are open to the public and the entire community is invited to participate. Visit the Participate section to learn how you can get involved.



Margaret Atwood Biography

Margaret Eleanor Atwood, (born November 18, 1939) is a Canadian poet, novelist, literary critic, essayist, inventor, teacher and environmental activist. She has published seventeen books of poetry, sixteen novels, ten books of non-fiction, eight collections of short fiction, eight children's books, and one graphic novel, as well as several small press editions in poetry and fiction. Atwood and her writing have won numerous awards and honors including the Man Booker Prize, Arthur C. Clarke Award, Governor General's Award, and the National Book Critics and PEN Center USA Lifetime Achievement Awards. Atwood is also the inventor and developer of the LongPen and associated technologies that facilitate the remote robotic writing of documents. As a novelist and poet, Atwood's works encompass a variety of themes including the power of language, gender and identity, religion and myth, climate change, and "power politics." Many of her poems are inspired by myths and fairy tales which interested her from a very early age. Among her contributions to Canadian literature, Atwood is a founder of the Griffin Poetry Prize and Writers' Trust of Canada.

Speakers and Presentations

State of Sexual and Gender Minority Health Symposium — Illuminating the Intersections of Race and LGBTQ Health

Wed, 8/15, 2:00-5:30 PM, free

Arthur Rubloff Building, Aspen Hall, 375 E Chicago Ave, Chicago

Contact: Beth Ann Hamilton, 312-503-0049,

bethann.hamilton@northwestern.edu

The objective of this Symposium is to identify areas where research can directly improve the health and wellbeing of ethnic, racial, sexual and gender minorities.

Data Science Nights

Mon, 8/27, 6:30-8:30 PM, free

Chambers Hall, lower Level, 600 Foster Street, Evanston

Contact: Thomas Stoeger,

Thomas.stoeger@northwestern.edu

Data Science Nights are monthly hack nights on popular data science topics, organized by fellows and scholars from the Northwestern Data Science Initiative. Each night will feature one hour of structured programming followed by a hacking night with data science project or learning groups of your choice.



Quaecumque Sunt Vera

Whatsoever things are true

Parking

Evanston

Evanston Campus Parking Services

1841 Sheridan Rd., Evanston
847-491-3319
parking@northwestern.edu
www.northwestern.edu/up/parking
Open Monday-Friday, 8:00 AM – 4:00 PM

Permits are required to park in all lots on the Evanston campus every Monday through Friday from 8:00 AM to 4:00 PM. No permits are required to park on the Evanston campus after 4:00 PM or on weekends, though reserved spaces require permits at all times.

The cost of a guest permit is \$8.25 for a non-refundable, all-day pass. Visitors and guests may purchase a visitor permit at the Parking Services Office (see above for address) or at pay stations located in the North and South Parking Garages.

While there are many scattered parking lots on campus, the largest for guests include:

To the North

- North Campus Parking Garage (has a parking pay station): 2311 N. Campus Drive
- LARC Drive: North Campus Drive
- Noyes/Haven/Sheridan Lot: Haven Street & Sheridan Rd.

To the South

- South Campus Parking Garage (has a parking pay station and it is next to the parking office): 1847 Campus Drive
- South Beach Structure: 1 Arts Circle Drive
- Locy and Fisk Lot: 1850 Campus Drive
- 619 Emerson Lot
- 515 Clark Street
- 1801/1813 Hinman

To the West

- 1940 Sheridan Road (Engelhart)
- 2020 Ridge North Lot (University Police)
- 1948 Ridge Lot (University Police)
- ITEC Lot: University Place & Oak Avenue

Chicago

Chicago Campus Transportation and Parking

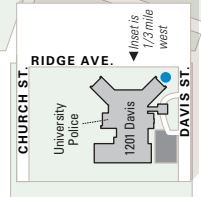
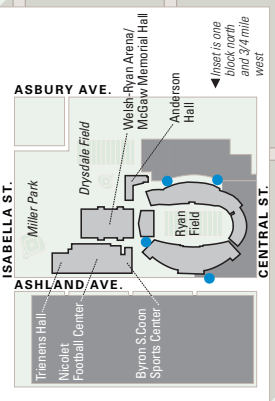
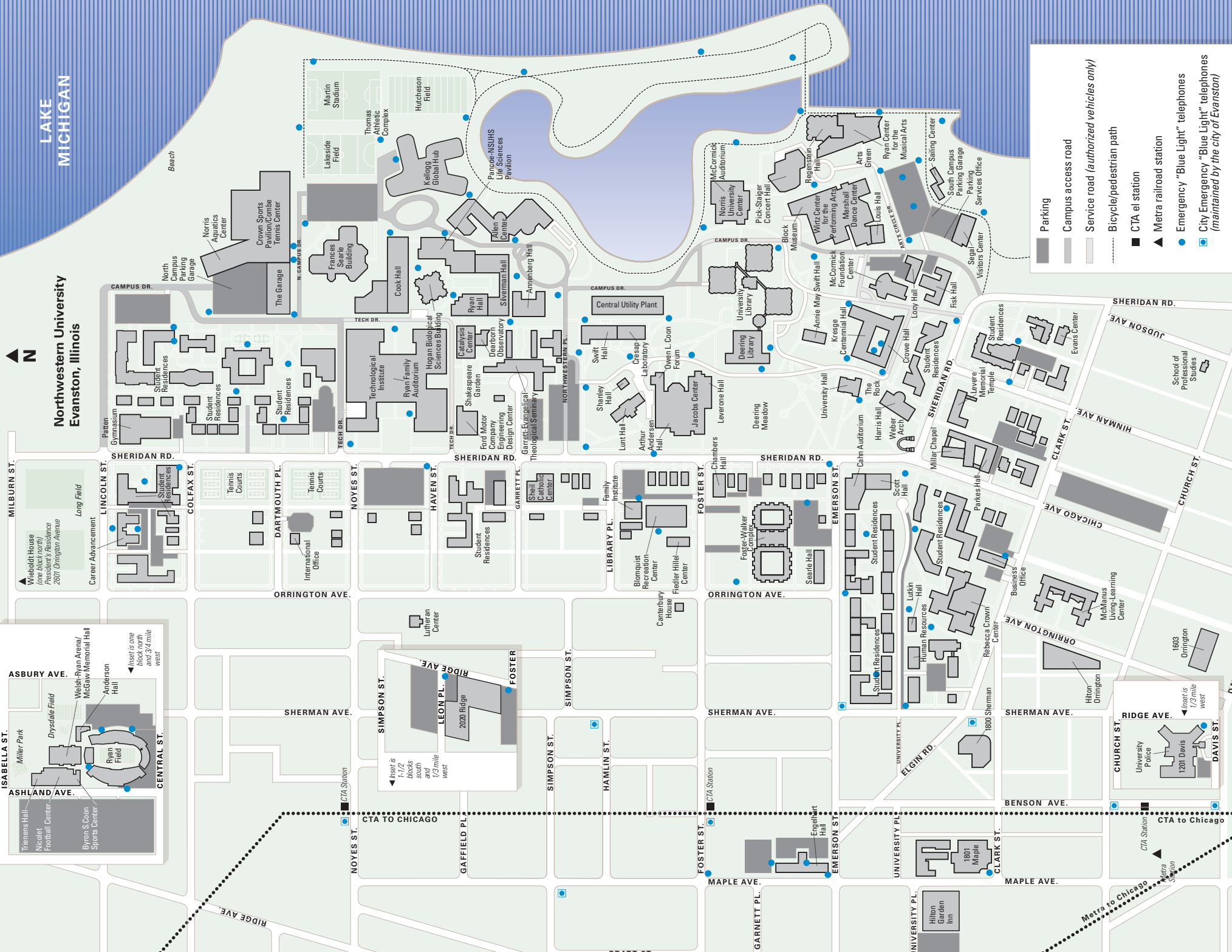
710 N. Lakeshore Dr., Abbott Hall Room 100, Chicago
312-503-1103
chicagoparking@northwestern.edu
www.northwestern.edu/transportation-parking
Open Monday-Friday, 8:00 AM – 5:00 PM

There is no free parking available on the Chicago campus but there are several options available for guests.

Public garages or Northwestern garages open to the public include:

- 275 E. Chestnut Street
- 222 E. Huron Street
- 710 N. Lake Shore Drive
- 680 N. Lake Shore Drive
- 259 E. Erie Street
- 321 E. Erie Street
- 441 E. Ontario Street

If you are going to the Chicago campus as the guest of a department, volunteer, participant in a study, or as a hospital patient, you can also contact the organizer of your event to inquire about potential discounted parking validations or passes.



Northwestern University

Neighborhood and Community Relations

1603 Orrington Avenue, Suite 1730

Evanston, IL 60201

www.northwestern.edu/communityrelations

Alan Anderson

Executive Director

alan.anderson@northwestern.edu

847-467-5762

To receive this publication electronically every month, please email Shayla Butler at shayla.butler@northwestern.edu

Back cover image: A window into a university for all seasons. Spring and architecture, summer and the Weber Arch, fall outside the Main Library, and Deering Library under a blanket of snow.



Northwestern University ²⁰ NEIGHBORHOOD AND COMMUNITY RELATIONS