



# Northwestern University

**Public Events**  
October 2021

***Subscribe*** to this publication by emailing Shayla Butler at  
[shayla.butler@northwestern.edu](mailto:shayla.butler@northwestern.edu)

# Table of Contents

## Overview

Highlighted Events.....	3
-------------------------	---

## Northwestern Events

### Arts

<i>Art Exhibitions</i> .....	6
<i>Film Screenings</i> .....	6
<i>Theater</i> .....	7
<i>Art Discussions</i> .....	8

Speakers and Presentations .....	9
<i>Scientific Speakers</i> .....	11

### Living

Leisure and Social .....	14
<i>Norris Mini Courses</i> .....	14
<i>Around Campus</i> .....	17
<i>Northwestern Music Academy</i> .....	18
<i>Norris Outdoors</i> .....	18
Religious Services .....	19

### Sports, Health, and Wellness

<i>Wildcat Athletics</i> .....	20
<i>Recreation</i> .....	22

Evanston Campus Map and Parking Information

Northwestern | NEIGHBORHOOD AND  
COMMUNITY RELATIONS

### **Neighborhood and Community Relations**

1800 Sherman Ave., Suite 7-100

Evanston, IL 60208

[www.northwestern.edu/communityrelations](http://www.northwestern.edu/communityrelations)

### **Dave Davis**

Executive Director

[dave.davis@northwestern.edu](mailto:dave.davis@northwestern.edu)

847-491-8434

**To receive this publication electronically  
every month, please email Shayla Butler at  
[shayla.butler@northwestern.edu](mailto:shayla.butler@northwestern.edu)**



# Highlighted Events

October 2021

## A Year of Creative Confinement Artwork

When: Friday, 10/1/21-10/25/21 (weekday), All Day  
Where: Online

Cost: Free

Contact: Andrew Kim, 847-491-2348,  
dittmargallery@u.northwestern.edu

The Virtual Exhibit will visually depict how Art recorded History during the global health crisis of 2020 – 2021. No matter what challenges are faced, life (though altered) will not stop, and neither should Art. As a mouthpiece for history, Art provides a permanent record of our lives – documenting so we never forget. We build on what we learn in order to move forward.

Fine Art artist Marcia Babler (and Northwestern University graduate) saw the restrictive confinement as an opportunity to express the role Art plays in our lives. Starting in July 2020, Babler used headlines as a foundation to develop visual stories of fear, frustration, and hope.



## American Indian Center 68<sup>th</sup> Annual Powwow

When: Friday, 10/8/21-8/10/21, All Day  
Where: Schiller Woods, W Irving Park Rd & N Cumberland Ave, Chicago, IL 60634  
Cost (General, Seniors/Children/Military, Under 5): \$15, \$10, Free

The American Indian Center – Chicago is proud to present their 68<sup>th</sup> Annual Powwow. Activities include intertribal dancing, art marketplace, native food, archery, and cultural presentations. Gates open at 5pM on Friday and 10AM on Saturday and Sunday.

AMERICAN

**W. IRVING PARK ROAD, WEST OF N. CUMBERLAND AVE.**

<b>MCs:</b>	<b>MARK DENNING (ONEIDA)</b> <b>SHANNON MARTIN (POTAWATOMI/OJIBWE)</b>
<b>HOST DRUM:</b>	<b>MIDNITE EXPRESS</b> OPIE DAY-BEDEAU (ANISHINABEE)
<b>ARENA DIRECTOR:</b>	<b>RJ SMITH</b> (OJIBWE/ASSINIBOINE)
<b>HEAD JUDGE:</b>	<b>RONNIE PRESTON</b> (SAN CARLOS APACHE)
<b>HEAD VETERANS:</b>	<b>JEFF MARTIN</b> (POTAWATOMI/OJIBWE) <b>CHRISTY JACKSON (OJIBWE)</b>
<b>HEAD DANCERS:</b>	SELECTED EACH SESSION

## Western Privilege: Work, Intimacy, and Postcolonial Hierarchies in Dubai

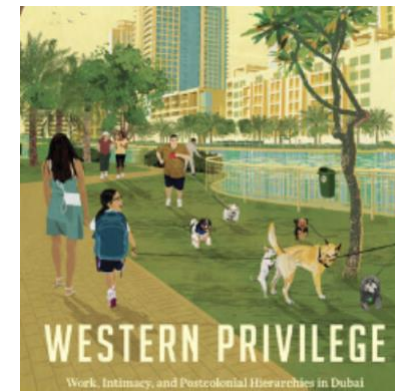
When: Monday, 10/11/21, 12:30 – 1:30 PM (CT)

Where: Online (Free)

Contact: Danny Postel, danny.postel@northwestern.edu

Nearly 90 percent of residents in Dubai are foreigners with no Emirati nationality. As in many global cities, those who hold Western passports share specific advantages: prestigious careers, high salaries, and comfortable homes and lifestyles. With this book, Amélie Le Renard explores how race, gender and class backgrounds shape experiences of privilege, and investigates the processes that lead to the formation of Westerners as a social group.

Westernness is more than a passport; it is also an identity that requires emotional and bodily labor. And as they work, hook up, parent, and hire domestic help, Westerners chase Dubai's promise of socioeconomic elevation for the few. Through an ethnography informed by postcolonial and feminist theory, Le Renard reveals the diverse experiences and trajectories of white and non-white, male and female Westerners to understand the shifting and contingent nature of Westernness—and also its deep connection to whiteness and heteronormativity. *Western Privilege* offers a singular look at the lived reality of structural racism in cities of the global South.



## Northwestern Homecoming Football Game (Wildcats v. Rutgers Scarlet Knights)

When: Saturday, 10/16/21, 11:00 AM (CT)

Where: Ryan Field

Cost: Purchase tickets by seat (price varies)

Come back and visit your Alma Mater and cheer on the Wildcats as they compete against the Rutgers Scarlet Knights during the homecoming football game! In addition, revisit your college experience with activities like Paint Norris Purple, Purplepalooza, Food Truck Festivals, and Wildcat Warm-Up and Pep Rally!



### The Battlefields of Clara Barton

When: Friday, 10/29-10/31/21, 7:30 – 9:30PM (CT)

Where: Wirtz Center for the Performing Arts, Josephine Louis Theater, 1949 Campus Drive

Cost: General/NU students: \$15/\$6

Contact: Wirtz Center, 847-491-7282, [wirtz@northwestern.edu](mailto:wirtz@northwestern.edu)

The Battlefields of Clara Barton is a modern folk/rock musical about the vibrant life of Clara Barton, a Civil War nurse, a political activist, and a revered founder of the American Red Cross. In a tumultuous life that spanned almost a century, Clara fought on many battlefields: historical, political, and emotional. Brought to life by an ensemble of women playing multiple roles where age and gender are fluid, the threads of Clara's story run from past to present with seamless synchronicity, creating a rich tapestry of themes as personal and potent today as they were then.



### A Conversation with Novelist, Poet, Essayist, Screenwriter & Playwright Chris Abani

When: Friday, 10/29/21, 12:00 – 1:00 PM (CT)

Where: Online (Free)

Contact: Danny Postel, [danny.postel@northwestern.edu](mailto:danny.postel@northwestern.edu)

In *The Face: Cartography of the Void*, acclaimed poet, novelist, and screenwriter Chris Abani has given us a brief memoir that is, in the best tradition of the genre, also an exploration of the very nature of identity. Abani meditates on his own face, beginning with his early childhood that was immersed in the Igbo culture of West Africa. *The Face* is a lush work of art that teems with original and profound insights into the role of race, culture, and language in fashioning our sense of self. Abani's writing is poetic, filled with stories, jokes, and reflections that draw readers into his fold; he invites them to explore their own "faces" and the experiences that have shaped them.



### Norris Center Mini Courses

These weekly recurrent mini courses are great to attend with friends to learn a new skill! Courses contain both virtual and in-person options, and free to sign up for. The program lasts from Monday, 10/11/21 to Wednesday, 12/2/21. For more information, please contact the Mini Courses Department at [minicourses@u.northwestern.edu](mailto:minicourses@u.northwestern.edu) or 847-467-7112. Register online at Norris Box Office. Early registration opens from August 23<sup>rd</sup> to September 20<sup>th</sup> (\$10 off regular fees for multiple session courses only), and regular registration starts September 21<sup>st</sup>. Classes are open to everyone, but enrollment is selected on a first come first enrolled basis! Find more information [here](#).



### NU Recreation Group Exercise Classes

Where: In-Person and Online

Cost: Free

Stay fit and active even during the pandemic, from the comfort and safety of your home! Northwestern Recreation is offering virtual and in-person group exercise classes this winter. Classes like cardio, strength, yoga, ZUMBA, HIIT, Kickboxing, and BODYPUMP are online, and a list of instructors and times can be found [here](#). Registration is required and may be done on the website. More information is included in the Recreation chapter of this Events Listing.







# Arts

## Art Exhibitions

### A Year of Creative Confinement Artwork

When: Friday, 10/1/21-10/25/21 (weekday), All Day  
Where: Online

Cost: Free

Contact: Andrew Kim, 847-491-2348,

dittmargallery@u.northwestern.edu

The Virtual Exhibit will visually depict how Art recorded History during the global health crisis of 2020 – 2021. No matter what challenges are faced, life (though altered) will not stop, and neither should Art. As a mouthpiece for history, Art provides a permanent record of our lives – documenting so we never forget. We build on what we learn in order to move forward.

Fine Art artist Marcia Babler (and Northwestern University graduate) saw the restrictive confinement as an opportunity to express the role Art plays in our lives. Starting in July 2020, Babler used headlines as a foundation to develop visual stories of fear, frustration, and hope.



### Sky Hopinka: Cloudless Blue Egress of Summer

When: Friday, 10/1/21 (weekday), 12:00PM-5:00PM CT

Where: Block Museum of Art, 40 Arts Circle Drive, Evanston, IL 60208

Cost: Free

Contact: Lindsay Bosch, Lindsay.bosch@northwestern.edu

*Cloudless Blue Egress of Summer*, a two-channel video installation by the artist Sky Hopinka (Ho-Chunk/Pechanga, born 1984, Ferndale, WA), offers an immersive and elusive reckoning with histories of colonial violence and Indigenous resistance. The thirteen-minute work examines the history of the Castillo de San Marcos, the oldest fort in the continental United States. Finished in 1695, the structure was known as Fort Marion when it held Native Americans captive throughout the Seminole Wars of the 19th century. In the 1870s, Cheyenne, Kiowa, Comanche, Arapaho, and Caddo Indian prisoners were transported to the fort, where prison supervisor Richard Henry Pratt developed educational techniques designed to “Americanize” his captives. The U.S. boarding school system that grew out of these experiments imposed a regime of compulsory assimilation on generations of Indigenous children, a practice of cultural genocide that intentionally divided families and deprived communities of their linguistic and cultural heritage.



### Who Says, Who Shows, What Counts: Thinking About History with The Block's Collection

When: Friday, 10/1/21 (weekday), 12:00PM-5:00PM CT

Where: Block Museum of Art, 40 Arts Circle Drive, Evanston, IL 60208

Cost: Free

Contact: Lindsay Bosch, Lindsay.bosch@northwestern.edu

How do artists, artworks, and museums shape and challenge our understanding of the past? In 2020-2021 Northwestern University's Block Museum of Art celebrates its 40th anniversary. Leading up to this milestone, The Block introduced a major initiative to acquire works of art that encourage critical thinking about the representation of history. This initiative and The Block's anniversary celebration culminates with *Who Says, Who Shows, What Counts: Thinking about History with The Block's Collection*, an exhibition inviting visitors to think critically about how artists, artworks, and museums engage with narratives of the past.



## Film Screening

### Ephraim Asili: The Inheritance (2020)

When: Saturday, 10/2/21, 1:00 – 2:30 PM CT

Where: Block Museum of Art, 40 Arts Circle Drive, Evanston, IL 60208

Cost: Free

Contact: Block Museum of Art, 847-491-4000, block-museum@northwestern.edu

New York-based filmmaker Ephraim Asili follows upon a series of celebrated experimental short films with this inventive and idiosyncratic debut feature. Drawing on Asili's experiences as a young activist, *The Inheritance* depicts an intergenerational group of Black radicals embarking on an experiment in



communal living in West Philadelphia. The film wittily explores different approaches to political education, from poetry readings to dinner-table debates, placing special emphasis on the catalytic energy of Black material culture like books and records. The Inheritance paints a warm, boldly stylized, but clear-eyed picture of the challenges of collectivity—one that rewards seeing on the big screen.



#### **Shtisel: A Free, Virtual, and Exceptional Event on the Netflix Hit Series**

*When:* Sunday, 10/10/21, 12:00 PM (CT)

*Where:* Online

*Cost:* Free

*Contact:* Krystle Felcaro Heaps, [Krystle.felcaro@northwestern.edu](mailto:Krystle.felcaro@northwestern.edu)

You're invited to get a behind-the-scenes look at the hit Netflix series "Shtisel" and hear directly from actors Neta Riskin (Giti) and Zohar Shtrauss (Lippe) as well as the show's creator Yehonatan Indursky. Register at the link shared above.

#### **Theater**

#### **Open House: "A Weekend for the Arts at Wirtz"**

*When:* Friday-Sunday, 10/15-10/17/21, 7:30PM (Fri/Sat), 2PM (Sun)

*Where:* Wirtz Center of the Performing Arts, 1949 Campus Drive

*Cost:* Free

*Contact:* Wirtz Center, 847-491-7282, [wirtz@northwestern.edu](mailto:wirtz@northwestern.edu)

And we're back! The Wirtz Center for the Performing Arts is hosting a "A Weekend for the Arts," to celebrate the return to in person, live performance. From scenes of upcoming shows to captivating displays of costumes and scenic elements designed by our talented students, this special event offers patrons an up-close, behind the scenes look at aspects of the Wirtz Center not often seen or experienced.

#### **Native Guard**

*When:* Saturday, 10/23-10/24/21, 2:00 – 4:00 PM (CT)

*Where:* Abbott Hall, 710 N. Lake Shore Drive, Chicago, IL 60611

*Cost:* General/Senior Citizen/NU faculty/students: \$30/\$27/\$25/\$12

*Contact:* Wirtz Center, 847-491-7282, [wirtz@northwestern.edu](mailto:wirtz@northwestern.edu)

Native Guard, the Pulitzer Prize-winning collection of poetry by Northwestern University Professor and Former U.S. Poet Laureate Natasha Trethewey, will be staged this season as the inaugural production at the newly dedicated Virginia Wadsworth Wirtz Center for Performing and Media Arts in Chicago. First adapted for the stage by Atlanta's Alliance Theatre in 2014 to sold-out audiences, Native Guard juxtaposes the deeply personal experiences of Trethewey, a child of a then-illegal marriage between her African-American mother and Caucasian father living in 1960s Mississippi, with the experience of a soldier in the Native Guard, the first African-American Union troop in the Civil War who was charged with guarding white Confederate captives. Years after her mother's tragic death, Trethewey reclaims her memory, just as she reclaims the voices of the black soldiers whose service has been all but forgotten.

#### **The Battlefields of Clara Barton**

*When:* Friday, 10/29-10/31/21, 7:30 – 9:30PM (CT)

*Where:* Wirtz Center for the Performing Arts, Josephine Louis Theater, 1949 Campus Drive

*Cost:* General/NU students: \$15/\$6

*Contact:* Wirtz Center, 847-491-7282, [wirtz@northwestern.edu](mailto:wirtz@northwestern.edu)

The Battlefields of Clara Barton is a modern folk/rock musical about the vibrant life of Clara Barton, a Civil War nurse, a political activist, and a revered founder of the American Red Cross. In a tumultuous life that spanned almost a century, Clara fought on many battlefields: historical, political, and emotional. Brought to life by an ensemble of women playing multiple roles where age and gender are fluid, the threads of Clara's story run from past to present with seamless synchronicity, creating a rich tapestry of themes as personal and potent today as they were then.



## Art Discussions

### More at the Museum: Online Collection Talk

When: Thursday, 10/14/21, 12:30 – 1:00 PM CT

Where: Online

Cost: Free

Contact: Block Museum of Art, 847-491-4000, block-museum@northwestern.edu

Join the Block Museum for a look at artworks from the collection that explore ideas of excess, consumption, and the environment, and offer an interdisciplinary perspective on the climate crisis. This online talk is led by Block staff and inspired by *The Story of More* by Hope Jahren, Northwestern University's 2021-2022 One Book One Northwestern (OBON) selection. *Presented by the Block Museum in partnership with the NU Alumnae.*

### Students Shape the Collection: Artist Talk with Leonard Suryajaya

When: Wednesday, 10/20/21, 6:00 – 7:30PM (CT)

Where: Block Museum of Art, Mary and Leigh, 40 Arts Circle Drive, Evanston IL

Cost: Free

Contact: Block Museum of Art, 847-491-4000, block-museum@northwestern.edu

As part of the Block Museum's Student Acquisition initiative, Northwestern students in the 2020-2021 Block Museum Student Associates program selected artist Leonard Suryajaya's *Quarantine Blues* (2020) for the museum's collection.

Suryajaya's work explores complex intersections of intimacy, community and family, and how the "everyday is layered with histories, meanings, and potential." He will be joined in dialogue by Student Associates to discuss his practice, how this work explores the personal and collective impact of the COVID-19 pandemic, and the artist's role in shaping narratives of history.



### Testimony: Poetry as Storyteller – A Conversation with Nathalie Handal

When: Monday, 10/25/21, 12:30 – 2:00 PM (CT)

Where: Online

Cost: Free

Contact: Dany Postel, danny.postel@northwestern.edu

The MENA Interdisciplinary Working Group on Story-telling and Violence: Narratives of Insecurity in the Middle East and North Africa presents Testimony: Poetry as Storyteller – A Conversation with Nathalie Handal.

### Once Upon a Pandemic: Publishing Your Story During A Global Crisis

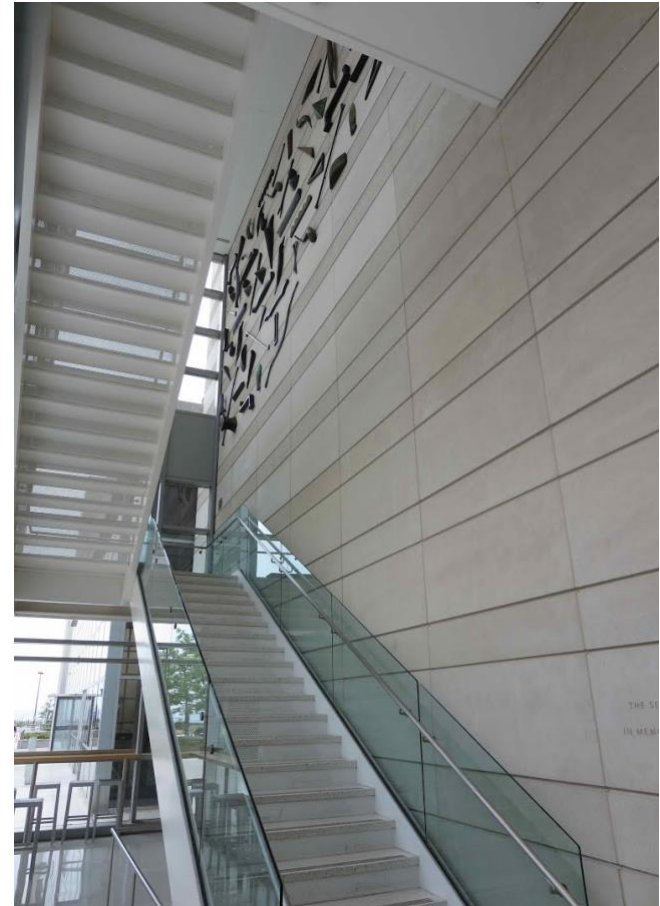
When: Thursday, 10/28/21, 12:00 – 1:00 PM (CT)

Where: Online

Cost: Free

Contact: Melanie Galvan, 312-503-3946, melanie.galvan@northwestern.edu

Join Northwestern University School of Professional Studies (SPS) for a conversation between two award-winning authors on writing, publishing fiction during the pandemic, and the role of storytelling in society. The talk features SPS MFA in Prose and Poetry faculty member Lori Rader-Day, author of *The Lucky One*, and special guest Christopher Coake, author of *You Would Have Told Me Not To*.





# Speaker and Presentations

## The Universal Enemy: Jihad, Empire, and the Challenge of Solidarity

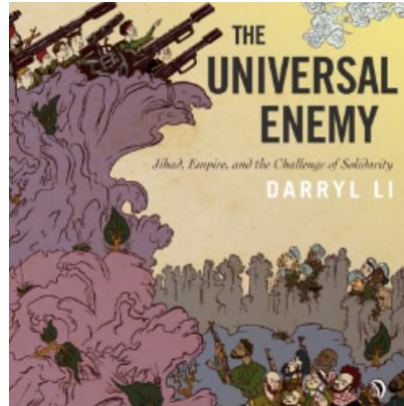
When: Monday, 10/4/21, 12:30 – 2:00 PM (CT)

Where: Online (Free)

Contact: Danny Postel, danny.postel@northwestern.edu

No contemporary figure is more demonized than the Islamist foreign fighter who wages jihad around the world. Spreading violence, disregarding national borders, and rejecting secular norms, so-called jihadists seem opposed to universalism itself. In a radical departure from conventional wisdom on the topic, *The Universal Enemy* argues that transnational jihadists are engaged in their own form of universalism: these fighters struggle to realize an Islamist vision directed at all of humanity, transcending racial and cultural difference.

Anthropologist and attorney Darryl Li reconceptualizes jihad as armed transnational solidarity under conditions of American empire, revisiting a pivotal moment after the Cold War when ethnic cleansing in the Balkans dominated global headlines. Muslim volunteers came from distant lands to fight in Bosnia-Herzegovina alongside their co-religionists, offering themselves as an alternative to the US-led international community. Li highlights the parallels and overlaps between transnational jihads and other universalisms such as the War on Terror, United Nations peacekeeping, and socialist Non-Alignment. Developed from more than a decade of research with former fighters in a half-dozen countries, *The Universal Enemy* explores the relationship between jihad and American empire to shed critical light on both.



## Storytelling, Climate Justice, and Self-Determined Indigenous Futures

When: Thursday, 10/7/21, 6:00 – 7:00 PM (CT)

Where: Online (Free)

Contact: Nancy Cuniff, 847-467-2294, onebook@northwestern.edu

What does it mean to live well with the Earth in face of climate and ecological crisis? What does a self-determined climate future look like for indigenous communities and peoples who have persisted despite centuries of colonization and environmental upheaval?

This series celebrates indigenous scholars, writers, and artists who consistently demonstrate excellence in their work concerning indigenous peoples and histories in addition to actively addressing contemporary issues faced by American Indian and indigenous communities.

## Kevin Mazur on His New Book “Revolution in Syria: Identity, Networks, and Repression”

When: Friday, 10/8/21, 12:00 – 1:00 PM (CT)

Where: Online (Free)

Contact: Danny Postel, danny.postel@northwestern.edu

How does protest advancing diverse claims turn into violent conflict occurring primarily along ethnic lines? This book examines that question in the context of Syria, drawing insight from the evolution of conflict at the local level. Kevin Mazur shows that the challenge to the Syrian regime did not erupt neatly along ethnic boundaries, and that lines of access to state-controlled resources played a critical structuring role; the ethnicization of conflict resulted from failed incumbent efforts to shore up network ties and the violence that the Asad regime used to crush dissent by challengers excluded from those networks. Mazur uses variation in the political and demographic characteristics of locales to explain regime strategies, the roles played by local intermediaries, the choice between non-violent and violent resistance, and the salience of ethnicity. By drawing attention to cross-ethnic ties, the book suggests new strategies for understanding ostensibly ethnic conflicts beyond Syria.

## Western Privilege: Work, Intimacy, and Postcolonial Hierarchies in Dubai

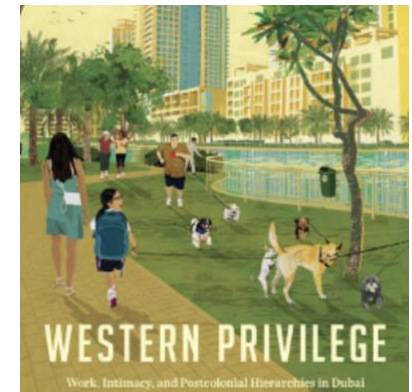
When: Monday, 10/11/21, 12:30 – 1:30 PM (CT)

Where: Online (Free)

Contact: Danny Postel, danny.postel@northwestern.edu

Nearly 90 percent of residents in Dubai are foreigners with no Emirati nationality. As in many global cities, those who hold Western passports share specific advantages: prestigious careers, high salaries, and comfortable homes and lifestyles. With this book, Amélie Le Renard explores how race, gender and class backgrounds shape experiences of privilege, and investigates the processes that lead to the formation of Westerners as a social group.

Westernness is more than a passport; it is also an identity that requires emotional and bodily labor. And as they work, hook up, parent, and hire domestic help, Westerners chase Dubai's promise of socioeconomic elevation for the few. Through an ethnography informed by postcolonial and feminist theory, Le Renard reveals the diverse experiences and trajectories of white and non-white, male and female Westerners to understand the shifting and contingent nature of Westernness—and also its deep connection to whiteness and heteronormativity. *Western Privilege* offers a singular look at the lived reality of structural racism in cities of the global South.



### Smart Great Lakes: Strategy, Implementation and Benefits

When: Tuesday, 10/12/21, 12:00 – 1:00 PM (CT)

Where: Online

Contact: Northwestern Center for Water, water@northwestern.edu

Smart technologies including wireless sensor networks, edge computing, and machine learning show great promise for improving our ability to observe and predict the behavior of the Great Lakes. Distributed, real-time data collection will dramatically increase the amount of information on the Great Lakes, and broad data sharing can facilitate coordination to address shared challenges – including assessing the effects of climate change, managing infrastructure and transportation systems, and responding to immediate hazards such as extreme weather events. This panel discussion will address the needs, challenges and benefits of implementing the Common Strategy for Smart Great Lakes, which will be released by the Smart Great Lakes Initiative on October 1st. Panelists will discuss data collection and sharing in the context of Great Lakes climate change, water levels, ecosystems, algal blooms, and flooding. Perspectives will be provided on needs and benefits for Great Lakes cities and Indigenous communities.

### Israel After the Afghanistan Crisis: The New Geopolitics of the Middle East

When: Thursday, 10/14/21, 11:00 AM – 12:00 PM (CT)

Where: Online (Free)

Contact: Krystle Felcaro Heaps, 847-491-2329, Krystle.felcaro@northwestern.edu

Join the Israel Innovation Project in discussing the emirate of Afghanistan and the surge of fundamentalism Islam. This is Session I in the Israel Innovation Project. Session II takes place on Thursday, 10/28/21 at the same time. Session II will be discussing the impact on the regional and international powers in the Middle East, namely Turkey, Iran, Russia, and the U.S.

### Mary Weismantel on Her New Book “Playing with Things: Engaging the Moche Sex Pots”

When: Friday, 10/14/21, 12:00 – 1:00 PM (CT)

Where: Online (Free)

Contact: Cindy Pingry, c-pingry@northwestern.edu

More than a thousand years ago on the north coast of Peru, Indigenous Moche artists created a large and significant corpus of sexually explicit ceramic works of art. They depicted a diversity of sex organs and sex acts, and an array of solitary and interconnected human and nonhuman bodies. To the modern eye, these Moche “sex pots,” as Mary Weismantel calls them, are lively and provocative but also enigmatic creations whose import to their original owners seems impossible to grasp. In *Playing with Things*, Weismantel shows that there is much to be learned from these ancient artifacts, not merely as inert objects from a long-dead past but as vibrant Indigenous things, alive in their own human temporality. From a new materialist perspective, she fills the gaps left by other analyses of the sex pots in pre-Columbian studies, where sexuality remains marginalized, and in sexuality studies, where non-Western art is largely absent.

### Performing Power: Cultural Hegemony, Identity, and Resistance in Colonial Indonesia

When: Friday, 10/15/21, 9:00 – 10:00 AM (CT)

Where: Online (Free)

Contact: Elizabeth Morrissey, 847-467-6609, e-morrissey@northwestern.edu

*Performing Power* illuminates how colonial dominance in Indonesia was legitimized, maintained, negotiated, and contested through the everyday staging and public performance of power between the colonizer and colonized. Dr. van der Meer explores what seemingly ordinary interactions reveal about the construction of national, racial, social, religious, and gender identities as well as the experience of modernity in colonial Indonesia.

### A Discussion with Richard Haass about his New Book “The World: A Brief Introduction”

When: Monday, 10/18/21, 4:00 – 4:45 PM (CT)

Where: Online (Free)

Contact: Francesca Petty, 847-467-4172, wcas-events@northwestern.edu

Diplomat, author, Rhodes Scholar, and foreign policy analyst, Dr. Richard Haass dedicates his career to assisting others achieve global literacy, and advising parties on how to navigate challenging foreign policy choices in an interconnected world. Dr. Haass’s extensive career spans across interdisciplinary fields that work to promote peace and international cooperation. Currently, Dr. Haass is on his 19th year of Presidency at the Council on Foreign Relations. During his years of ambassadorship, he directed policy towards peace processes in Afghanistan and Northern Ireland. In 2013 Dr. Haass won the Trippery International Peace Award for his efforts to promote conflict resolution while he served as chair of the multiparty negotiations in Northern Ireland. Famously in 2001 – 2003, Dr. Haass closely advised former Secretary of State Colin Powell, while working as the Director of Policy Planning for the Department of State. Moreover, in 1989 – 1993 Dr. Haass was a special assistant to President George H.W. Bush, where he received the Presidential Citizens Medal for his contributions to policy making during Operations Desert Shield and Desert Storm. In 2020 Penguin Press published his new book *The World: A Brief Introduction* – in this work, he outlines eloquently a succinct means of understanding the world as it stands today- from





world history, to intercultural dynamics, global threats including: climate change, nuclear weapons, cyber security, and global health, and how we can contribute a more positive future via understanding.

#### **One Book Keynote – Author/Professor Hope Jahren**

*When:* Thursday, 10/28/21, 5:00 – 6:00 PM (CT)

*Where:* Online (Free)

*Contact:* Nancy Cuniff, 847-467-2294, onebook@northwestern.edu

Our planet faces the dual crises of rapid climate change and biodiversity loss. Three quarters of the carbon dioxide emissions driven by humans has occurred since 1950. There has been nearly a 70% average decline of birds, amphibians, mammals, fish, and reptiles since 1970. Jahren tells us that since 3800 years ago in Mesopotamia, when the global population was about 100 million, people have worried that the earth would not be able to provide enough food, water, and shelter for the growing population. She explains how tremendous advances in healthcare, sanitation, agricultural productivity, energy production and technological innovation allowed the population to reach more than 7 billion.

However, Jahren also tells us this growth has been associated with the industrialization of agriculture with excess use of chemical fertilizers and nutrient runoff, the wasting of edible food sufficient to adequately feed all undernourished people in the world, greatly increased consumption of fossil fuels, rapidly expanding production of diverse plastics and associated plastic waste, and inequitable resource extraction. Altogether, this has resulted in environmental degradation, biodiversity loss, a rapid rise in greenhouse gas levels leading to global temperature increases and sea level rise, and widespread disparities in access to resources across the US and around the world. We have years, not decades, to address these existential threats. When addressing the United Nations Sustainable Development Goal 13 to, "take urgent action to combat climate change and its impacts," we need to ensure that populations already experiencing disproportionate impacts from climate change are not further disadvantaged by the policies implemented for adaptation and mitigation.

#### **A Conversation with Novelist, Poet, Essayist, Screenwriter & Playwright Chris Abani**

*When:* Friday, 10/29/21, 12:00 – 1:00 PM (CT)

*Where:* Online (Free)

*Contact:* Danny Postel, danny.postel@northwestern.edu

In *The Face: Cartography of the Void*, acclaimed poet, novelist, and screenwriter Chris Abani has given us a brief memoir that is, in the best tradition of the genre, also an exploration of the very nature of identity. Abani meditates on his own face, beginning with his early childhood that was immersed in the Igbo culture of West Africa. *The Face* is a lush work of art that teems with original and profound insights into the role of race, culture, and language in fashioning our sense of self. Abani's writing is poetic, filled with stories, jokes, and reflections that draw readers into his

fold; he invites them to explore their own "faces" and the experiences that have shaped them.



#### **Institute for Policy Research 2021 Colloquia**

Each year IPR organizes a series of talks featuring IPR and Northwestern faculty, as well as faculty from other universities, presenting their research on some of the day's most socially relevant topics. The [events](#), typically free and open to the public, showcase the progress those experts have made in various branches of IPR's research areas, including the Institute's signature, interdisciplinary Fay Lomax Cook Monday colloquia.

- Abundance: Living in a World of Information Plenty – 10/4/21
- The Problem of Labor Standards Enforcement: Complaints vs. Compliance with the Minimum Wage – 10/11/21
- Understanding and Encouraging White American Parent-Child Conversations about Race – 10/18/21
- The Promise of a School-Based, Trauma-Informed Group Therapy Intervention for Young Women – 10/25/21

#### **Scientific Speakers**

#### **The Role of Manipulation Primitives in Building Dexterous Robotic Systems**

*When:* Friday, 10/1/21, 3:00 – 4:30 PM (CT)

*Where:* Technological Institute, TECH LR3, 2145 Sheridan Road, Evanston, IL 60208 (Free)

Contact: Amy Nedoss, amy.nedoss@northwestern.edu

In this talk I will illustrate four different perspectives that we as a community have embraced to study robotic manipulation: 1) controlling a simplified model of the mechanics of interaction with an object; 2) using haptic feedback such as force or tactile to control the interaction with an environment; 3) planning sequences or trajectories of manipulation actions to achieve long-horizon goals; and 4) using visual cues to guide manipulation actions. These are complementary perspectives, and building general dexterous robotic manipulation systems requires integrating them. I will discuss the key role that manipulation primitives play at integrating these perspectives. In particular, I will present recent work on tactile dexterity to embed tactile feedback into the mechanics models of frictional contact, and on planning with visual affordances to execute dexterous long-term behavior on novel objects. I will illustrate this work in the context of a dual-arm dexterous robotic system.

### **Bioinspired Drug Delivery and Targeting Strategies for Vaccination and Immunotherapy**

When: Monday, 10/4/21, 4:00 – 5:00 PM (CT)

Where: SQBRC, Simpson Querrey Auditorium, 303 E. Superior Street, Chicago, IL 60611 (Free)

Contact: Liz Murphy, 312-503-4892, Liz.Murphy@northwestern.edu

Self-assembled nanobiomaterials that are engineered to achieve specific biodistributions and mechanisms of degradation hold great promise for controlled stimulation of the immune system. Taking advantage of the morphological and chemical flexibility of self-assembled polymeric systems, we aim to mimic various structures and biochemical mechanisms of pathogens to enhance cell-selective intracellular delivery and treatment efficacy during immunotherapy. Interfacial phenomena are an essential and often overlooked component of immunology, and we aim to better understand and engineer the bio/nano interface between soft nanobiomaterials and cells of the immune system during the controlled delivery of immunomodulatory therapeutics. Here, I will present some of our ongoing work towards developing novel nanobiomaterials and bio/nano interfaces, as well as recent applications of these soft materials for immunotherapy, vaccination and controlled drug delivery in general.

### **Crystallization in a Periodically Perturbed Random Granular Medium**

When: Monday, 10/4/21, 4:00 – 5:00 PM (CT)

Where: Ford Hive Room 2350, 2133 Sheridan Road, Evanston, IL 60208 (Free)

Contact: Elisa Lindstrom, elisa.lindstrom@northwestern.edu

An understanding of crystal formation in a homogeneous disordered state can provide insights into crystallization in a fluid, such as the formation of ice crystals in water, which is still poorly understood. Experiments on packings of spheres over the past half century suggest that under repeated small disturbances, the spheres reach a “Random Close Packed” (RCP) state where the spheres occupy a maximum fraction of the container volume, 0.62–0.66. This talk will describe an experiment and numerical simulations on hard spheres that reveal that randomly packed spheres, after repeated small disturbances, occupy a well-defined volume fraction,

$0.646 \pm 0.001$ . Further small disturbances lead to the nucleation of crystallites that, if they reach a critical size of 10–15 spheres, grow rapidly, and ultimately the container is filled with crystallites.

### **Tips on Writing Papers**

When: Tuesday, 10/5/21, 1:00 – 2:00 PM (CT)

Where: Technological Institute, M416, 2145 Sheridan Road, Evanston, IL 60208

Contact: Madeline Kennedy, 847-491-3345, madeline.kennedy@northwestern.edu

Every researcher wants his or her paper to be read, yet journal articles are often readable only by specialists in a narrow area. Even papers in specialty journals should be written so non-specialists can understand something about the concepts and results. The tips that will be presented in this talk are based on observations of how readers select papers to read and how they decide whether or not to continue reading. Improving the readability of your manuscripts will lead to more readers and more citations of your work.

### **Integrating Clinical Decision Support into Every Day Care**

When: Thursday, 10/7/21, 12:00 – 1:00 PM (CT)

Where: Online

Contact: IPHAM, ipham@northwestern.edu

Clinical Decision Support can help make the Electronic Health Record work to guide every day clinical care and go beyond the every day alerts that often frustrate providers when caring for their patients. Clinical Decision Support can be integrated in a variety of ways into standard clinical care without adding a burden to care providers and put help to decision making in front of providers at key times that can relate to the patients in front of them.

### **Climate Change Adaptation and Environmental Engineering: Evolving Practices and New Tools**

When: Friday, 10/8/21, 10:00 – 11:00 AM (CT)

Where: Online (Free)

Contact: Nancy Cunniff, 847-467-2294, onebook@northwestern.edu

David A. Dzombak, AAEEES 2021 Kappe Lecturer, Hamerschlag University Professor, Department Head, Civil and Environmental Engineering Carnegie Mellon University will examine the need and challenge of climate change projection in particular locations and the scale at which infrastructure engineering projects take place. Evolving practices and tools will be presented and demonstrated through some environmental engineering applications.

### **Strange New Worlds: Is Earth Special?**

When: Thursday, 10/14/21, 5:30 – 7:00 PM (CT)

Where: Cahn Auditorium, 600 Emerson Street, Evanston, IL 60208

Contact: CIERA Astrophysics, 847-491-8646, CIERA@northwestern.edu

Since the 1990s, astronomers have found over four thousand (and counting!) exoplanets, alien worlds orbiting other stars. These planets orbit a wide variety of stars, and themselves are all wildly different; huge, small, hot, cold, airless, or with thick atmospheres. As we learn more about them, we come closer to answering the



Big Questions: Is there another Earth out there? And if so, will it support life? Is Earth unique, or is the galaxy filled with blue-green worlds that look achingly like our own? In this engaging and fun talk, astronomer Phil Plait will show you how we find these planets, and how our own compares to them.

#### **Survive & Thrive: Gynecologic Cancer Patient and Caregiver Program**

*When:* Saturday, 10/16/21, 9:00 – 1:00 PM (CT)

*Where:* Online (Free)

*Contact:* Lurie Cancer Center, cancer@northwestern.edu

On Saturday, October 16, the Lurie Cancer Center will host Survive & Thrive, a virtual interactive course for women living with gynecologic cancer--past or present--or those at increased risk of developing the disease, along with their families and caregivers. This course will provide current information, valuable resources, access to experts in the field, and an opportunity to connect with others in the cancer community in a warm and supportive environment.

#### **Social Determinants of Health and Breast Cancer**

*When:* Wednesday, 10/20/21, 12:00 – 1:00 PM (CT)

*Where:* Online (Free)

*Contact:* Lurie Cancer Center, cancer@northwestern.edu

You are invited to join the Lurie Cancer Center for an informative session examining how social determinants of health affect breast cancer care. Presentations will explore the impact of barriers to preventing and treating breast cancer, and methods to overcome these challenges. This program is open to patients, survivors, caregivers, advocates, healthcare professionals and investigators.

#### **Symposium 2021 Technology, Policy, and Individual Actions: Three Approaches to Address Climate Change**

*When:* Friday, 10/29/21, 8:45 AM – 3:00 PM (CT)

*Where:* Online (Free)

*Contact:* Nancy Cunniff, 847-467-2294, onebook@northwestern.edu

The Northwestern University Center for Engineering Sustainability and Resilience will host a climate change symposium on Friday, October 29 titled *“Technology, Policy, and Business: Three Approaches to Address Climate Change.”* A major objective of this event is to help engineering researchers place their energy- and climate-related research in the context of other drivers of change, as well as provide updates on the latest in technology development for addressing climate change.

## Leisure and Social



### American Indian Center 68<sup>th</sup> Annual Powwow

*When:* Friday, 10/8/21-8/10/21, All Day

*Where:* Schiller Woods, W Irving Park Rd & N Cumberland Ave, Chicago, IL 60634

*Cost* (General, Seniors/Children/Military, Under 5): \$15, \$10, Free

The American Indian Center – Chicago is proud to present their 68<sup>th</sup> Annual Powwow. Activities include intertribal dancing, art marketplace, native food, archery, and cultural presentations. Gates open at 5pM on Friday and 10AM on Saturday and Sunday.

### Evanston Farmer's Market

*When:* Saturday, 10/9/21, 7:30 AM – 1:00 PM (CT)

*Where:* 1800 Maple Ave, Evanston, IL 60201

*Cost:* Free

Make your Saturday morning destination the Downtown Evanston Outdoor Farmers' Market. Support vendors, new and old, as they return for the 2021 market season. Look for Henry's Booth and come to the screening of the Documentary *Season of Change on Henry's Farm* at McCormick Auditorium in Norris University Center.

### Wild Roots Garden Tour

*When:* Saturday, 10/9/21, 12:00 – 3:00 PM (CT)

*Where:* Norris University Center, Wild Fooths Garden, 1999 Campus Drive, Evanston, IL 60208

*Cost:* Free

Members of the Wild Roots Garden will give tours at the Norris University Center before and after the screening of *Seasons of Change on Henry's Farm*. Wild Roots is managed by undergraduate students in collaboration with Facilities Management.

### Northwestern Homecoming Football Game (Wildcats v. Rutgers Scarlet Knights)

*When:* Saturday, 10/16/21, 11:00 AM (CT)

*Where:* Ryan Field

*Cost:* Purchase tickets by seat (price varies)

Come back and visit your Alma Mater and cheer on the Wildcats as they compete against the Rutgers Scarlet Knights during the homecoming football game! In addition, revisit your college experience with activities like Paint Norris Purple, Purplepalooza, Food Truck Festivals, and Wildcat Warm-Up and Pep Rally!



### Norris University Center Mini Courses

These **weekly** recurrent mini courses are great to attend with friends to learn a new skill! Courses contain both virtual and in-person options, and free to sign up for. The program lasts from Monday, 10/11/21 to Wednesday, 12/2/21. For more information, please contact the Mini Courses Department at [minicourses@u.northwestern.edu](mailto:minicourses@u.northwestern.edu) or 847-467-7112.

Register online at Norris Box Office. Early registration opens from August 23<sup>rd</sup> to September 20<sup>th</sup> (\$10 off regular fees for multiple session courses only), and regular registration starts September 21<sup>st</sup>. Classes are open to everyone, but enrollment is selected on a first come first enrolled basis! Find more information [here](#).

### Creative Arts

#### A Creative Approach to Watercolor

*When:* Mondays, 10/11/21-11/15/21, 6:00 – 8:00 PM (CT)



Where: ARTica Classroom  
Cost (NU/Public): \$117/\$127

Have you ever wanted to create a dramatic painting in watercolor? Then this is the course for you! For 6 weeks, Ingrid will guide participants through basic learning steps of brush control, various washes, color theory, the importance of value (those light and dark shapes) and creating exciting shapes not boring ones. Added to this list are some special tips that Ingrid will share to bring excitement to watercolor painting. There will be no fear of the blank paper and students will wish that the course was longer. At the end of each session, the participants learn from each other during a class critique.

### **Drawing and Color Theory**

When: Tuesdays, 10/12/21-11/16/21, 6:00 – 8:00 PM (CT)  
Where: ARTica Classroom  
Cost (NU/Public): \$117/\$127

This course will teach basic drawing techniques and the application of color, focusing on learning the color wheel and creating art that really pops!

### **Anime and Manga Drawing**

When: Saturdays, 10/16/21-11/20/21, 1:00 – 2:15 PM (CT)  
Where: Online  
Cost (NU/Public): \$87/\$97

In this class, students will learn to draw characters' faces and eyes, expressions, bodies and basic proportions along with hands and feet.

### **Introduction to Wheel Throwing**

When: Session A: Tuesdays, 10/12/21-11/16/21, 6:00 – 8:00 PM (CT)  
Session B: Wednesdays, 10/13/21-11/17/21, 6:00 – 8:00 PM (CT)  
Where: ARTica Ceramic Studio  
Cost (NU/Public): \$127/\$137

Students will be introduced to the basic principles of constructing functional vessels using the wheel and understanding the tactile nature of clay as an art medium. This course will teach students the process of wheel throwing through learning how to wedge clay, how to construct cylinders on the wheel, and using colorants through glazing techniques. The kinesthetic process of pottery will be explored through developing technical skills on the wheel as well as understanding the function of various forms developed throughout the history of ceramics. Learn how to make functional work that you can use at home as foodware for yourself, friends, or family.

### **Intermediate/Advanced Wheel Throwing**

When: Thursday, 10/14/21-11/18/21, 6:00 – 8:00 PM (CT)  
Where: ARTica Ceramic Studio  
Cost (NU/Public): \$127/\$137

In this course, students will learn to perfect their ceramic techniques through intermediate and advanced tips and tricks. Students will learn how to throw a range of functional work and explore ways of decorating and glazing. Students will

be expected to address their work creatively- in hopes to create and sustain a ceramic practice and portfolio. The goal of this course is to bring confidence to budding ceramic artists through strengthening throwing skills and finding community within the studio.

\*Prerequisites: have taken a beginner's wheel throwing class

### **Whimsical Hand-building**

When: Saturdays, 10/16/21-11/20/21, 1:00 – 3:00 PM (CT)  
Where: ARTica Ceramic Studio  
Cost (NU/Public): \$127/\$137

In this course, students will explore beginning hand building techniques. Such as coil building and slab building. This course will specifically focus on making vessels that are whimsical, creative, and functional. Students are encouraged to find their artistic voice with prompts that invigorate the mind and push creative boundaries.

### **Hand-building at Home**

When: Saturdays, 10/16/21-11/20/21, 3:00 – 4:30 PM (CT)  
Where: Online  
Cost (NU/Public): \$127/\$137

In this course, students will be introduced to clay as an art-making material and learn the basic processes involved to create functional objects such as cups, bowls, and plates. Students will engage in learning how to make pinch pots, coil build objects, and slab rolling forms in order to understand the nature of clay and how to respond to the material. Students will also learn how to add colorants by glazing their work and will have their pieces fired by the end of the session to bring home and use as their own foodware.

### **Introduction to Cartoon Storytelling**

When: Tuesdays, 10/19/21-11/23/21, 6:00 – 7:30 PM (CT)  
Where: Chicago Room  
Cost (NU/Public): \$77/\$87

This course is for anyone who has an interest in expression themselves through cartoons and those interested in cartoons as an art form. This class is about realizing the potential of becoming a cartoonist no matter what your skill level. This course is intended to introduce students to the possibilities.

## **Food and Drink**

### **Baking Basics – Cake and Cookies**

When: Mondays, 10/11/21-11/15/21, 7:00 – 8:30 PM (CT)  
Where: Online  
Cost (NU/Public): \$47/\$57

Do you want to bake from scratch, but don't know where to start? Or are you a more practiced baker looking to step up your game? Led by an experienced home baker, this virtual course brings the learning experience right into your own kitchen. Over the course of four weeks, you will learn baking fundamentals as well

as lots of tips and tricks. Working step-by-step with the instructor, you'll put those skills to use making and baking some delicious treats.

### **Wine Appreciation**

*When:* Section A: Thursdays, 10/14/21-11/11/21, 6:00 – 7:30 PM (CT)

Section B: Thursdays, 10/14/21-11/11/21, 7:45 – 9:15 PM (CT)

*Where:* Wildcat Room

*Cost (NU/Public):* \$117/\$127

Welcome to the world of wine! Whether you're new to wine or an old hand, there is always something new in the wine world. During each class, students will learn to taste and describe wines just like the professionals. Vinicultural areas in California, France, and the Southern Hemisphere are always featured along with new discoveries. Wine and food matches are heavily emphasized. Finally, a night of sparkling and dessert wines ends the five-week course.

### **Mixology**

*When:* Tuesdays, 10/12/21-11/9/21, 6:00 – 7:30 PM (CT)

*Where:* Louis Room North

*Cost (NU/Public):* \$117/\$127

Hosting a cocktail party? Can't decide what to order at the bar? Mixology masters lead this lecture-style course giving the colorful history of the major spirit categories. Students will receive recipes and see drink-mixing techniques demonstrated. You'll learn everything you need to know to improve your creations. Students are encouraged to taste the cocktails mixed by the minicourse assistants.

## **Movement and Wellness**

### **Tai Chi**

*When:* Wednesdays, 10/13/21-11/17/21, 7:00 – 8:30 PM (CT)

*Where:* Lake Room

*Cost (NU/Public):* \$77/\$87

Tai Chi is a non-combat martial art, which helps cultivate mental focus, builds the protective energy Qi in your lungs, creating a powerful immune defense against external pathogens. Take this course with Inna Melnikov, Doctor of Acupuncture and Chinese Medicine with over 25 years of experience.

## **Dance and Music**

### **Beginning Guitar**

*When:* Tuesdays, 10/12/21-11/23/21, 5:30 – 6:30 PM (CT)

*Where:* Lake Room

*Cost (NU/Public):* \$127/\$137

Students will learn the fundamentals of guitar—basic chords, scales, improvisation, simple riffs, and more. \*Guitars are not provided. Guitars can be rented at Guitar Works in Evanston.

### **Intermediate Guitar**

*When:* Tuesdays, 10/12/21-11/23/21, 6:45 – 7:45 PM (CT)

*Where:* Lake Room

*Cost (NU/Public):* \$127/\$137

Students will go beyond the fundamentals of the guitar to learn more advanced chords and shapes, patterns, scales, more challenging songs, and other music theory concepts. \*Guitars are not provided. Guitars can be rented at Guitar Works in Evanston.

### **Beginning Hip-Hop**

*When:* Monday, 10/11/21-11/15/21, 7:00 – 8:00 PM (CT)

*Where:* McCormick Auditorium

*Cost (NU/Public):* \$77/\$87

This class will focus on the techniques of Hip Hop (street/urban) dance styles, through introduction of fundamental vocabularies of specific dances. Students will develop proficiency of a few core techniques that are seen across a wide variety of Hip-Hop Dance styles.

## **Dance and Music**

### **American Sign Language I**

*When:* Monday, 10/11/21-11/29/21, 6:00 – 7:30 PM (CT)

*Where:* Online

*Cost (NU/Public):* \$87/\$97

This course introduces the basics of American Sign Language. American Sign Language (ASL) is quickly becoming one of the most widely used languages in the United States. This class will explore basic sign vocabulary and basic grammatical structures such as English to ASL and ASL to English. This class will cover basic Sign Language and a basic introduction to the world of Deaf Cultures.

### **Pocket Billiards for Beginners**

*When:* Tuesdays, 10/12/21-11/16/21, 6:00 – 7:30 PM (CT)

*Where:* Game Room

*Cost (NU/Public):* \$77/\$87

These lessons are tailored to players who range from beginner level to advanced. You will learn topics ranging from mastering fundamentals to difficult shots and game strategies. Space is extremely limited in this in-person class.

### **The Basics of Chess**

*When:* Tuesdays, 10/12/21-11/16/21, 6:00 – 8:00 PM (CT)

*Where:* Rock Room

*Cost (NU/Public):* \$77/\$87

These lessons are tailored to players who range from beginner level to advanced. You will learn topics ranging from mastering fundamentals to difficult shots and game strategies. Space is extremely limited in this in-person class.

### Podcasting for Beginnings – DIY Production at Home

*When:* Wednesday, 10/13/21-11/10/21, 6:00 – 7:30 PM (CT)

*Where:* Online

*Cost (NU/Public):* \$67/\$77

Podcasting is easy and can be done at home with simple tools. This course will help you to produce your own podcast projects. Learn how to prepare, host, record, edit, mix and distribute your podcast. No high-end audio equipment or prior experience is needed.

### Creative Writing

*When:* Thursdays, 10/14/21-11/18/21, 6:00 – 7:30 PM (CT)

*Where:* Online

*Cost (NU/Public):* \$67/\$77

Learn how to position yourself to generate ideas for original personal stories with characters that are believable and relatable. We will look at understanding the psychology of our plots and characters to help better understand the world we create.

### Around Campus

#### Design + Innovation for Social Change (DISC)

*Contact:* [disc@u.northwestern.edu](mailto:disc@u.northwestern.edu)

DISC is a student club at Northwestern that aims to employ technology as a means of making tangible progress for social good in the community. In the past year, we worked on projects for the Levy Senior Center Foundation and World Relief Chicago to enhance the platforms and technologies of these social-impact-oriented organizations.

DISC is currently looking for new tech-related projects to take on for the upcoming year. We will work on projects from January until the end of our school year, in the middle of June. If you don't believe your project can be completed in time, we would be more than happy to work with you for more than one year if more work needs to be done! This service would be completely free. Please feel free to reach out with any potential projects or questions.

#### NU China Care Playgroup/Mentorship Events

*When:* Saturdays (Date TBD)

*Where:* Online

*Contact:* Grace Liu, [graceliu2023@u.northwestern.edu](mailto:graceliu2023@u.northwestern.edu)

China Care is an independent, student-run Northwestern service club dedicated to supporting and contributing to the lives of Chinese children in the Chicagoland area. However, **all families** interested in learning about Chinese culture are encouraged to partake in the events. China Care club members host playgroups events that consist of a variety of cultural activities (cooking lessons, arts-and-crafts, games) and educational lessons based on different aspects of Chinese culture, ranging from Chinese history to Asian foods. China Care families are also encouraged to apply for a college mentor for their child through the NU China Care



Mentorship Program. Please visit the China Care website to learn more about the organization or email Grace to sign up for the China Care listserv—where you will receive regular newsletter updates of upcoming events.

#### Community Council for International Students (CCIS)

*Where:* The International Office, 630 Dartmouth Place, Evanston

*Contact:* Norman Axelrad, [normaxe29@gmail.com](mailto:normaxe29@gmail.com), 847-673-6727

Sylvia Alvino, [sylalvino@yahoo.com](mailto:sylalvino@yahoo.com), 847-328-7516

CCIS is continuously looking for local volunteers who may be alums, neighbors, retired, or merely interested in meeting young people from other countries. CCIS has a series of personalized informal cultural immersion programs provided by local volunteers who meet with Northwestern University international graduate students, visiting scholars, post-doctoral fellows, and their families. We are also looking for a few good volunteers with business experience in areas including marketing, writing, photography, public relations, planning, and technology to support our ongoing activities. Apply at <https://tinyurl.com/ccisvolunteer>

#### The Alumnae of Northwestern University

The Alumnae offers intellectually stimulating, noncredit courses to the public at a modest cost. Each year more than 3,000 people enroll in these courses, taught virtually during COVID-19 by renowned University faculty.

For more information about upcoming courses, visit The Alumnae website [www.nualumnae.org](http://www.nualumnae.org).

#### Purple Pantry

*When:* Thursdays (weekly), 11:00 AM to 2:00 PM (Central)



*Where: Sheil Catholic Center, 2110 Sheridan Rd., Evanston*

Individuals experiencing difficulty accessing food can schedule individual appointments for use of the pantry both during and outside the designated time. The Purple Pantry is intended to be as barrier-free as possible, so it accommodates individuals with vegetarian, vegan, gluten-free, kosher, and halal dietary needs. Appointments for use of the pantry are required. For questions, to schedule an individual appointment, or to suggest produce to meet your dietary restriction, please email [purplepantry@northwestern.edu](mailto:purplepantry@northwestern.edu).

### **Northwestern Music Academy** **Learn more online**



For more than 70 years, Northwestern University's Music Academy in Evanston has provided music instruction to children and adult students from surrounding communities and the greater Chicago and Northwest Indiana area.

Most Academy instructors also teach in the Henry and Leigh Bienen School of Music and hold masters and doctoral degrees in music teaching and performance. The Academy often serves as a teaching laboratory for college students enrolled in pedagogy courses and is a member of the National Guild of Community Schools of the Arts.

#### **Kindermusik** (newborn to age 6)

*Dates: Term starts Sept 25, 2021 and ends Jan 22, 2022*

*Cost: \$300-355 (15-week class and home materials)*

This 45-minute class is a lovely way for young children and parents to interact. Multi-level activities that are appropriate for each stage of a child's development give lap babies, crawlers, and walkers a chance to explore music, touch, sound, and movement. Home materials including a CD, a book related to the theme of the unit, and an instrument provide additional ideas for sharing the class experience at home.

#### **Other Courses**

(offered virtually Fall Quarter)

##### **Piano and Organ**

The Music Academy Piano Division offers pre-piano class, which serves as an introduction to more formal piano instruction: keyboard instruction in two tracks

for students ages 6 to 18, and instruction for adults. Pre-piano serves as an introduction to more formal piano instruction. Keyboard instruction for children begins with pre-staff music and expands to landmark-based intervallic reading. After the first year of study, most children participate in the Illinois State Music Teacher's Association curriculum assessment, where they demonstrate skills and receive certificates and pins for participation.

##### **Strings**

The String Division offers private lessons in violin, viola, and cello, with goals of both providing musical instruction and instilling a love of music and of learning music. The division believes that all children can learn to their potential when placed in an environment that includes clear instruction, an involved parent, and regular opportunities to listen to and perform.

##### **Voice** (Adults)

The Music Academy has canceled chorus rehearsals and voice classes for fall 2021.

### **Norris Outdoors**



Norris University Center offers a wide range of equipment available to rent for your outdoor adventures including:

- camping equipment (tents, backpacks, etc.)
- grills and stoves sports gear (Frisbees, volleyball and net, etc.)

Visit Norris Outdoors for package deals and a full list of equipment. The office is open Monday to Sunday, 12:30 – 6:00 PM, or at 847-491-2345. They can also be found at [www.northwestern.edu/norris/arts-and-recreation/norrisoutdoors](http://www.northwestern.edu/norris/arts-and-recreation/norrisoutdoors) or on Facebook and Twitter. Items must be requested at least 5 days in advance.

# Religious Services

Northwestern is proud to have a vibrant community embracing diverse religious beliefs. We have regular services on campus as well as events for religious observances. For general inquiries, contact the Office of Religious and Spiritual Life at 847-491-7256 located at 1870 Sheridan Rd. on our Evanston campus.

## Christian – Nondenominational

University Bible Fellowship hosts nondenominational Christian worship service on Sundays from 11:00AM–1:00 PM Central. Join the UBF community on Facebook Live for fellowship, singing, prayer, and preaching. Click [here](#) for more information about registration.

## Christian – Protestant

Christian worship in a broad Protestant tradition is held most Sundays of the academic year at 11:00 AM – 12:00 PM virtually. Click [here](#) for more information about registration.

## Christian – Catholic

Daily Mass is celebrated Mondays to Fridays at 5:00–5:30 PM, On Sundays, Masses are held at 9:00–10:00 AM, 11:00AM–12:00PM, and 5:00–6:00PM. Services are posted to the YouTube channel and you can watch and participate at a time convenient for you. Visit <http://www.sheil.northwestern.edu/> for a complete list of events.

## Jewish

The Fiedler Hillel leads virtual Reform and Conservative Shabbat services every Friday evening from 6:00 – 6:45 PM. A full list of events is at [www.northwesternhillel.org](http://www.northwesternhillel.org)

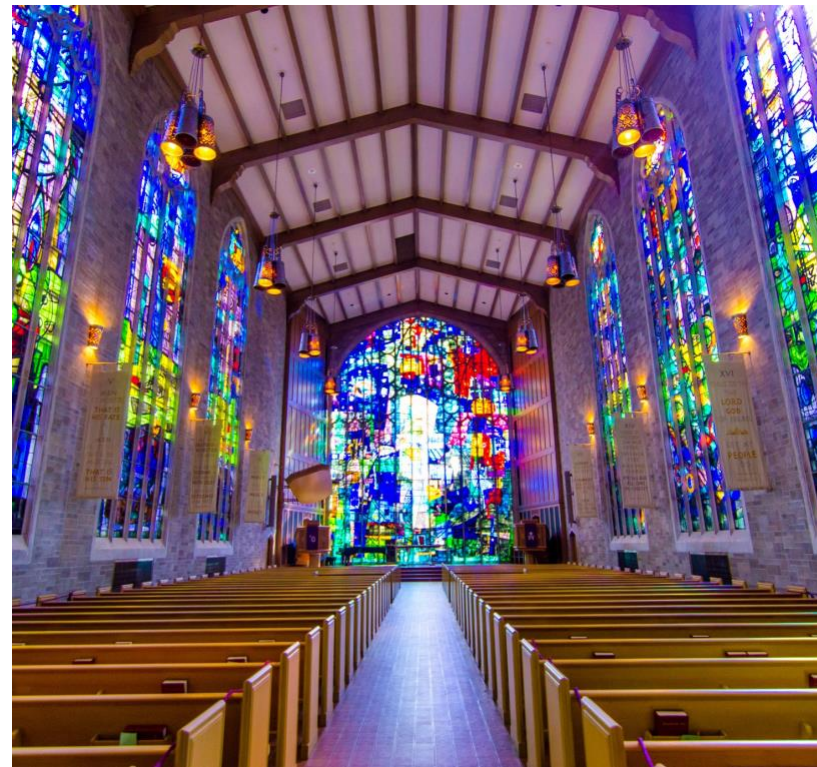
**Northwestern  
Hillel**

## Spirituality

Northwestern also offers opportunities for the community to engage in interfaith fellowship or spiritual exploration.

## Observances

- October 6-14: Navarati (Hindu)
- October 14: Dussehra (Hindu)
- October 19: Mawlid (Islam)
- October 31: Samhain (Pagan and Wiccan)



# Northwestern Wildcat Athletics

The Northwestern Wildcats are Chicago's Big Ten team. Come cheer on the Wildcats at home or on the road.

Sports in season this summer and fall are:

- field hockey – women's
- football – men's
- soccer – men's
- soccer – women's
- volleyball – women's

There are two easy ways to purchase tickets, listed below. Tickets are typically mailed two to three weeks prior to a home event unless the will call delivery method is selected.

- Online at [www.nusports.com](http://www.nusports.com)
- Calling or visiting the ticket office at 888-467-8775, Monday to Fridays from 9:00 AM – 5:00 PM

You can also email the office at [cat-tix@northwestern.edu](mailto:cat-tix@northwestern.edu) and follow them on Twitter using the handle @NU\_Tickets.



## Field Hockey

Tickets are typically \$7 for adults, \$3 per person for groups of 15 or more, and \$5 for youth. Home games are at the Lanny and Sharon Martin Stadium, 2235 Campus Drive, Evanston.



Date and Time	Game
10/3, 11:00 AM	@ Penn State
10/8, 5:00 PM	@ Michigan
10/10, 11:00 AM	@ Ball State
10/15, 3:00 PM	Ohio State
10/17, 12:00 PM	Michigan State
10/29, 2:00 PM	@ Iowa
10/31, 12:00 PM	Indiana

## Football

Home games are at Ryan Field, and the arena opens three hours before kickoff. Please go online at [www.nusports.com](http://www.nusports.com) or call the ticket office at 888-467-8775 to ask about tickets.



Wildcat fans can purchase single-game tickets to Northwestern's seven regular-season contests immediately on Tuesday by calling 888-GO-PURPLE (888-467-8775) or at [NUSports.com](http://NUSports.com). Season tickets, the only way to guarantee the best seats at Ryan Field, are currently on sale here.

Groups of 15 or more can buy group tickets.

Date and Time	Game
10/2, 6:30 PM	@ Nebraska
10/16, 11:00 AM	Rutgers (Homecoming)
10/23, TBD	@ Michigan
10/30, TBD	Minnesota



## Soccer – Men's





Tickets are typically \$7 for adults, \$3 per person for groups of 15 or more, and \$5 for youth. Home games are at the Lanny and Sharon Martin Stadium, 2235 Campus Drive, Evanston.

Date and Time	Game
10/3, 4:00 PM	Ohio State
10/8, 6:00 PM	@ Maryland
10/12, 7:00 PM	NIU
10/15, 7:00 PM	Rutgers
10/19, 7:00 PM	@ Wisconsin
10/24, 4:00 PM	Villanova
10/31, 3:00 PM	Michigan State

### **Soccer – Women's**

Tickets are typically \$7 for adults, \$3 per person for groups of 15 or more, and \$5 for youth. Home games are at the Lanny and Sharon Martin Stadium, 2235 Campus Drive, Evanston.



Date and Time	Game
10/3, 1:00 PM	Nebraska
10/10, 1:00 PM	Indiana
10/14, TBA	@ Wisconsin
10/17, 3:00 PM	Minnesota
10/21, TBA	@ Purdue
10/24, 1:00 PM	Ohio State

### **Volleyball – Women's**

Tickets are typically \$7 for adults, \$3 per person for groups of 15 or more, and \$5 for youth. Home games take place at the Welsh-Ryan Arena.

Date and Time	Game
10/1, 7:00 PM	Rutger
10/2, 7:00 PM	Minnesota
10/8, 6:00 PM	@ Maryland
10/9, 6:00 PM	@ Penn State
10/13, 7:00 PM	@ Minnesota
10/16, 7:00 PM	@ Iowa
10/20, 7:00 PM	Illinois
10/23, 7:00 PM	Iowa
10/27, 6:00 PM	@ Purdue
10/30, 6:00 PM	@ Indiana

# Recreation

Northwestern Recreation offers opportunities to discover and maintain a healthy lifestyle to members of our community through a diverse array of recreational activities. A full list of activities can be found online at [www.nurecreation.com](http://www.nurecreation.com). For general questions, call 847-491-4303.

## Facilities

Membership to Northwestern Recreation offers access to a well-equipped facility with knowledgeable staff to assist you.

In addition to the highlighted offerings in this guide, the 95,000 square foot Henry Crown Sports Pavilion, Norris Aquatics Center, and Combe Tennis Center have space and amenities for all types of exercise, including: space to play team sports like basketball courts, group exercise, cardiovascular equipment, strength and weight-training equipment, an Olympic-sized pool, and a wellness suite for fitness assessments and massage.

On top of the benefits from membership to Northwestern Recreation, there are even more ways to be healthy. Additional fees apply for personal training, private courses, massage, and the pro shop.

## Location and Hours

The Henry Crown Sports Pavilion, which links to other facilities in Northwestern Recreation, is at 2311 Campus Drive, Evanston. Ample parking is available at the North Campus Parking Garage.

Hours for Henry Crown Sports Pavilion (hours during academic breaks differ, and hours for the pool and other areas vary):

Monday – Friday	6:00 AM – 9:00 PM
Saturday – Sunday	8:00 AM – 6:00 PM

## Membership

Community members, Northwestern employees, and university alumni are invited to join. There is a one-time registration fee per household of \$100.

Type	Annual	Monthly	Day passes before 3 pm	Day passes after 3 pm and weekends
Individual	\$500	\$52	\$12	\$18
Spouse	\$500	\$52	\$12	\$18

Child (each)	\$260	\$32	\$9 \$0 (under 6)	\$16 \$0 (under 6)
--------------	-------	------	----------------------	-----------------------

Rates for Northwestern faculty, staff, and their families:

Type	Annual	Monthly	Day passes before 3 pm	Day passes after 3 pm and weekends
Employee	\$400	\$44	\$9	\$16
Employee spouse	\$400	\$44	\$9	\$16
Employee child	\$260	\$32	\$9 \$0 (under 6)	\$16 \$0 (under 6)

Join Northwestern Recreation online at [www.nurecreation.com/membership](http://www.nurecreation.com/membership), by calling the membership office at 847-491-4303, or in person. Children 15 years old and under must be accompanied by a parent, and the child rate only applies if the parent is also a member. Complimentary trial memberships for one week are available upon request. Payment is accepted by cash, check, or credit card.

## Complimentary Pass

We are delighted to offer the opportunity to request a complimentary pass. The trial membership pass provides access to recreation facilities, including the Norris Aquatics Center, and programs, including Group Exercise classes. Beach access is also provided (May – September, weather permitting). This offer is open to first time users. Visit [nurecreation.com/freetrial](http://nurecreation.com/freetrial) for free trial pass guidelines.

## Open Recreational Tennis

- *Indoor Courts* – The Combe Tennis Center provides six indoor courts located within the Henry Crown Sports Pavilion Complex (see aforementioned Location and Hours).
- *Outdoor Courts* – Fifteen outdoor courts are available at the [Vandy Christie Tennis Center](#). Courts are available for recreational play on a first-come, first-served basis late spring through fall. Courts close for the season in late October.
- *Daily Court Reservations* – Reservations are only available for Northwestern faculty and staff and Northwestern students welcomed back to campus.
- *Permanent Court Time Reservations* – Not available at this time.

## Swimming

Contact: Ed Martig, e-martig@northwestern.edu

The Norris Aquatics Center offers a comprehensive program of fitness, instruction, recreational activities, diving, scuba, and life-saving courses. Membership to Northwestern Recreation is not required for aquatics programs. Find more information or register for programs at [www.nurecreation.com/aquatics](http://www.nurecreation.com/aquatics)

The pool is open every day for recreational swim. Lanes are available for laps or free swim. Hours when the pool is open are:

Weekdays	8:30 AM – 2:00 PM   4:30 – 8:30 PM
Saturday	9:30 AM – 5:30 PM
Sunday	8:00 AM – 5:30 PM

## Special Offers

### White Light Therapy

White Light Therapy has returned to the Henry Crown Sports Pavilion Wellness Suite. This service is free for Northwestern students, Henry Crown Sports Pavilion members, and massage clients. To make an appointment or for more information, call 847-467-2607 or visit the [Henry Crown Sports Pavilion Wellness Suite](#). Click [here](#) for more information.

### Massage Services

Massage Therapy is one of the most effective ways to combat stress and enhance wellness. Our massage therapists will work with you to customize your experience and cater to your individual needs. Effective massage therapy techniques, such as Swedish, Deep Tissue, Sports, Hot Stone, Aromatherapy, and Reflexology, are available to students, members, and non-members. Click [here](#) for more information.

- **COVID Precautions:** All of our staff are fully aware of the current requirements. They are undertaking extreme health and safety procedures to ensure the highest possible hygiene standards are maintained throughout every aspect of our operation.

### Back to School, Back to You

Class is back in session! Destress and release first-day jitters with a personalized, relaxing massage from Northwestern Massage Services. Our massage therapists help you combat stress, release tension, and enhance your overall well-being. Purchase in-person or by phone before October 16 to receive special welcome back discounts. Appointments are available and open to students, members, and non-members.

## The Breathing Class – Tap Into the Power of Breath

When: Tuesdays, 10/5/21-11/2/21, 12:00 – 1:00 PM (CT)

Cost (Students/Non-students): \$50/\$75

Breathing impacts all aspects of your well-being (from digestion to bone density!); most people do not breathe properly. In this class, you will learn how to spot dysfunctional breath patterns and learn how you can correct them. You will explore the biomechanics and biochemistry of breathing and engage in gentle movement to establish new healthy breathing habits. All interested participants will be able to register by phone or online beginning September 1 through October 15.

## Group Exercise Classes

Membership offers access to a variety of group exercise classes for free. Cardio, cycling, strength, yoga, and Pilates are online, while aqua fitness is at the Norris Aquatics Center. All virtual classes will be held via Zoom. Registration is required. For more specifics, please visit the NU Recreation website [here](#).

## Fall Quarter Schedule, 9/20/21-11/21/21

Time	Class	Location   Instructor
<b>Monday Classes</b>		
9:00 – 10:00 AM	Aqua Fitness	Pool   Malcolm
12:00 – 1:00 PM	Vinyasa Flow	Studio 2   John
12:00 – 1:00 PM	BODYPUMP	Studio 1AB   Stephanie
5:30 – 6:30 PM	ZUMBA	Studio 1AB   Symphony
5:30 – 6:30 PM	Pilates	Studio 2   Deanna
7:00 – 8:00 PM	Mindful Yoga	Studio 2   Katherine
<b>Tuesday Classes</b>		
6:15 – 7:00 AM	Cycle Challenge	TBD   Beth
7:00 – 8:00 AM	Sunrise Yoga	Studio 2   Donna
12:00 – 1:00 PM	Pilates Yoga Fusion	Studio 2   Julie S.
12:10 – 12:50 PM	Cycle Express	TBD   Vladimir
5:30 – 6:30 PM	Ashtanga Yoga	Studio 2   Julie R.
5:30 – 6:30 PM	BODYPUMP	Studio 1AB   Laura
7:00 – 8:00 PM	Vinyasa Flow	Studio 2   Chelsea
<b>Wednesday Classes</b>		
6:15 – 7:00 AM	BODYPUMP	Studio 1AB   Paul
7:00 – 8:00 AM	Pilates	Studio 2   Deanna
9:00 – 10:00 AM	Aqua Fitness	Pool   Julie S.
12:00 – 1:00 PM	Vinyasa Flow	Studio 2   Donna
12:00 – 1:00 PM	BODYPUMP	Studio 1AB   Bev
5:30 – 6:30 PM	ZUMBA	Studio 1AB   Symphony
5:30 – 6:30 PM	Pilates Barre	Studio 2   Jenna
7:00 – 8:00 PM	Ashtanga Yoga	Studio 2   Margaret
<b>Thursday Classes</b>		
6:15 – 7:00 AM	Cycle Challenge	TBD   Beth



7:00 – 8:00 AM	Sunrise Yoga	Studio 2   Donna
12:00 – 1:00 PM	Pilates Yoga Fusion	Studio 2   Julie S.
12:10 – 12:50 PM	Cycle Express	TBD   Vladimir
5:30 – 6:30 PM	Vinyasa Flow	Studio 2   Lisa
5:30 – 6:30 PM	BODYPUMP	Studio 1AB   Paul
7:00 – 8:00 PM	WERQ	Studio 1AB   Spencer
Friday Classes		
9:00 – 10:00 AM	Aqua Fitness	Pool   Malcolm
12:00 – 1:00 PM	Vinyasa Flow	Studio 2   Chelsea
12:00 – 1:00 PM	Strength & Core	Studio 1AB   Beth
5:30 – 6:30 PM	Mindful Yoga	Studio 2   Katherine
Saturday Classes		
8:15 – 9:15 AM	Cycle Challenge	TBD   Tina-Marie
9:30 – 10:30 AM	Yoga Basics	Studio 2   Margaret
9:30 – 10:30 AM	BODYPUMP	Studio 1AB   Bev/Maria
11:00 AM – 12:00 PM	Vinyasa Flow	Studio 2   John
Sunday Classes		
11:00 AM – 12:00 PM	Hatha Yoga	Studio 2   Katherine
12:00 – 1:00 PM	BODYPUMP	Studio 1AB   Rachelle

# Parking

## Evanston

### **Evanston Campus Parking Services**

1841 Sheridan Rd., Evanston  
847-491-3319  
parking@northwestern.edu  
www.northwestern.edu/up/parking  
Open Monday-Friday, 8:00 AM – 4:00 PM

Permits are required to park in all lots on the Evanston campus every Monday through Friday from 8:00 AM to 4:00 PM. No permits are required to park on the Evanston campus after 4:00 PM or on weekends, though reserved spaces require permits at all times.

The cost of a guest permit is \$8.25 for a non-refundable, all-day pass. Visitors and guests may purchase a visitor permit at the Parking Services Office (see above for address) or at pay stations located in the North and South Parking Garages.

While there are many scattered parking lots on campus, the largest for guests include:

#### To the North

- North Campus Parking Garage (has a parking pay station): 2311 N. Campus Drive
- LARC Drive: North Campus Drive
- Noyes/Haven/Sheridan Lot: Haven Street & Sheridan Rd.

#### To the South

- South Campus Parking Garage (has a parking pay station and it is next to the parking office): 1847 Campus Drive
- South Beach Structure: 1 Arts Circle Drive
- Locy and Fisk Lot: 1850 Campus Drive
- 619 Emerson Lot
- 515 Clark Street
- 1801/1813 Hinman

#### To the West

- 1940 Sheridan Road (Engelhart)
- 2020 Ridge North Lot (University Police)
- 1948 Ridge Lot (University Police)
- ITEC Lot: University Place & Oak Avenue

## Chicago

### **Chicago Campus Transportation and Parking**

710 N. Lakeshore Dr., Abbott Hall Room 100, Chicago  
312-503-1103  
chicagoparking@northwestern.edu  
www.northwestern.edu/transportation-parking  
Open Monday-Friday, 8:00 AM – 5:00 PM

There is no free parking available on the Chicago campus but there are several options available for guests.

Public garages or Northwestern garages open to the public include:

- 275 E. Chestnut Street
- 222 E. Huron Street
- 710 N. Lake Shore Drive
- 680 N. Lake Shore Drive
- 259 E. Erie Street
- 321 E. Erie Street
- 441 E. Ontario Street

If you are going to the Chicago campus as the guest of a department, volunteer, participant in a study, or as a hospital patient, you can also contact the organizer of your event to inquire about potential discounted parking validations or passes.

# Northwestern University Evanston, Illinois

LAKE  
MICHIGAN



- Parking
- Campus access road
- Service road (authorized vehicles only)
- Bicycle/pedestrian path
- CTA station
- Meza railroad station
- Emergency "Blue Light" telephones
- City Emergency "Blue Light" telephones (maintained by the city of Evanston)



# Northwestern University

## **Neighborhood and Community Relations**

1800 Sherman Ave., Suite 7-100

Evanston, IL 60208

[www.northwestern.edu/communityrelations](http://www.northwestern.edu/communityrelations)

## **Dave Davis**

Executive Director

[dave.davis@northwestern.edu](mailto:dave.davis@northwestern.edu)

847-467-5762

**To receive this publication electronically every month, please email Shayla Butler at [shayla.butler@northwestern.edu](mailto:shayla.butler@northwestern.edu)**

*Back cover image:* A window into a university for all seasons. Spring and architecture, summer and the Weber Arch, fall outside the Main Library, and Deering Library under a blanket of snow.



Northwestern University

28

NEIGHBORHOOD AND COMMUNITY RELATIONS