



# Northwestern University

**Public Events**  
February 2019

*Subscribe* to this publication by emailing Shayla Butler at  
[shayla.butler@northwestern.edu](mailto:shayla.butler@northwestern.edu)

# Table of Contents

## Overview

Highlighted Events.....	3
Black History Month .....	5

## Northwestern Events

### Arts

Music Performances .....	7
Theater .....	11
Exhibits .....	13
Art Discussions .....	14
Film Screenings .....	15

### Living

Leisure and Social .....	18
<i>Norris Mini Courses</i>	
<i>Around Campus</i>	
<i>ARTica (art studio)</i>	
<i>Norris Outdoors</i>	
<i>Northwestern Music Academy</i>	
Religious Services .....	21

### Sports, Health, and Wellness

Northwestern Wildcat Athletics .....	22
Recreation .....	27

### Speaking Events

One Book, One Northwestern: Margaret Atwood, <i>Handmaid's Tale</i> .....	30
Speakers and Presentations .....	31

*Evanston Campus Map and Parking Information*

Northwestern | NEIGHBORHOOD AND  
COMMUNITY RELATIONS

### **Neighborhood and Community Relations**

1603 Orrington Avenue, Suite 1730

Evanston, IL 60201

[www.northwestern.edu/communityrelations](http://www.northwestern.edu/communityrelations)

### **Dave Davis**

Executive Director

[dave.davis@northwestern.edu](mailto:dave.davis@northwestern.edu)

847-491-8434

**To receive this publication electronically  
every month, please email Shayla Butler at  
[shayla.butler@northwestern.edu](mailto:shayla.butler@northwestern.edu)**

*Cover image*

Winter colors of the Arch

# Highlighted Events

February 2019

## Caravans of Gold, Fragments in Time: Art, Culture and Exchange across Medieval Sahara Africa

Sat, 1/26 to Sun, 7/21, free

Block Museum of Art, Mary and Leigh,  
40 Arts Circle Drive, Evanston

Contact: Block Museum of Art, 847-491-4000,  
block-museum@northwestern.edu

Caravans of Gold presents more than 250 artworks and fragments spanning types, styles, and religious practices, representing over five centuries and a vast geographic expanse. The works, both European and African, weave a story of the global networks and multi-directional trade at play in the medieval world. The exhibition is notable for an unprecedented number of loans from the national collections of Africa, including many works never before seen in the United States.



## Keyword: Reproduction

Tues, 2/5, 5:00-6:30 PM, free

Kresge Hall, Trienens Forum (Room  
1-515), 1880 Campus Drive,  
Evanston

Contact: Eliot Colin, 847-491-5871,  
gender@northwestern.edu

A panel of five feminist doctors, scholars, educators and activists discuss the politics of human biological reproduction as well as the reproduction of social inequity and gendered systems of power.



- Angela Lawson (Northwestern Medicine's Fertility Clinic)
- Sekile Nzinga-Johnson, Ph.D. (Director of the Women's Center, GSS)
- Sloane Scott (Planned Parenthood Generation Action)
- Katie Watson (Northwestern Medicine, Medical Social Sciences, Medical Education, and Ob/Gyn)
- Sera Young (Anthropology & Global Health, Institute for Policy Research)

## The Wolves

Fri, 2/8, 8:00-10:00 PM

Sat, 2/9, 2:00-4:00 PM, 8:00-10:00 PM

Sun, 2/10, 2:00-4:00 PM

\$10 public, \$6 NU student (in advance)

The Wolves, a girls' indoor soccer team, practice drills as they prepare for a succession of games. As they warm up and talk about life, the girls navigate the politics of their personal lives as well as the politics of the larger world. Each team member struggles to negotiate her individuality while being a part of a group.

## The Political Development of Asset Inequality in the U.S.

Chloe Thurston (Northwestern University)

Mon, 2/11, 12:00-1:00 PM, free

Chambers Hall, Ruan Conference Room (lower level),  
600 Foster St, Evanston

Contact: Ellen Dunleavy, 847-491-3395,  
ipr@northwestern.edu

Chloe Thurston's research is at the intersection of American political development and political economy and has focused on the development of social and economic policies, interest groups and social movements, institutional change, and historical analysis.



## Jazz Orchestra: Jazz for Lovers

Thurs, 2/14, 7:30-9:30 PM

\$6 public, \$4 students

Ryan Center for the Musical Arts, Galvin Recital Hall, 70 Arts Circle, Evanston

Contact: Concert Management Office,

847-467-4000, events.music@northwestern.edu

Happy Valentine's Day! Bring a loved one with you to celebrate and experience the power of Cupid. This love-song program by the Jazz Orchestra and guest vocalist Kenny Washington will touch hearts and warm souls with new arrangements of "The Nearness of You," "Stardust," "My Funny Valentine," and other jazz standards, all performed against the beautiful backdrop of Chicago's skyline.



### The Stepford Wives

Thurs, 2/14, 7:00-9:00 PM, free

Block Museum of Art, Mary and Leigh, 40 Arts Circle Drive, Evanston

Contact: Block Museum of Art, 847-491-4000, block-museum@northwestern.edu

Joanna Eberhart experiences a major culture clash when she moves from New York City to the all too perfect town of Stepford, Connecticut. The women all keep their houses immaculate and the men all belong to a secretive club. Based on Ira Levin's (Rosemary's Baby, The Boys from Brazil) novel, The Stepford Wives's blend of suspense and social critique paved the way for films and television like Black Mirror and Jordan Peele's Get Out.

### Keyboard Conversations: Chopin in Paris

Fri, 2/15, 7:30-9:30 PM

\$30 public, \$10 students

Pick-Staiger Concert Hall, 50 Arts Circle Drive, Evanston

Contact: Concert Management Office, 847-467-4000, events.music@northwestern.edu

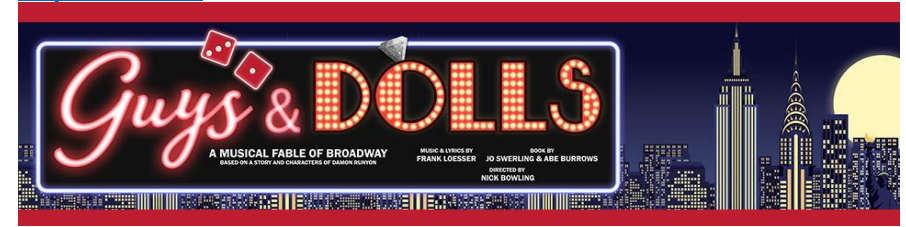
Jeffrey Siegel, piano

Stirring and deeply affecting works written after the patriotic Polish composer settled in Paris—Waltzes, Mazurkas, Polonaises, and the glorious Barcarolle.



- Waltz in A-flat Major, Op. 34, No. 1
- Etude in E Major, Op. 10, No. 3
- Mazurka in B-flat Major, Op. 7, No. 1
- Mazurka in C Minor, Op. 56, No. 3
- Polonaise in F-sharp Major, Op. 44
- Etude in C Minor, Op. 10, No. 12 ("Revolutionary")
- Etude in C-sharp Minor, Op. 25, No. 7
- Barcarolle, Op. 60

### Guys and Dolls



Fri, 2/15, 2/22, 3/1, 7:30 PM

Sat, 2/16, 2/23, 3/2, 7:30 PM

Sun, 2/17, 2/24, 3/3, 2:00 PM

Thurs, 2/28, 7:30 PM

\$6-\$30

This classic romantic comedy comes to life with a modern lens that takes us from the heart of Times Square, to the cafes of Havana, Cuba, and even into the sewers of New York City and leaves us asking what it really means to be a Guy... or a Doll. Gambler Nathan Detroit tries to find the cash to set up the biggest craps game in town while the authorities breathe down his neck; meanwhile, his girlfriend and nightclub performer, Adelaide, laments that they've been engaged for fourteen years. Nathan turns to fellow gambler Sky Masterson for the cash, and Sky ends up chasing the straight-laced missionary Sarah Brown as a result; but Sarah's never encountered anyone quite like Sky.

### I was One of the Chosen Ones: Slavery and the Valuation of Souls

**Daina Ramey Berry (University of Texas at Austin)**

Wed, 2/20, 12:15-2:00 PM

Harris Hall, Leopold Room 108, 1881 Sheridan Road, Evanston

Contact : Elzbieta Foeller-Pituch, 847-467-0885, efp@northwestern.edu

Dr. Berry is a specialist on the history of gender and slavery in the United States and Black women's history. She is the award-winning author and editor of five books and several scholarly articles. Her recent book, The Price for their Pound of Flesh: The Value of the Enslaved, from Womb to the Grave, in the Building of a Nation (Beacon, 2017) has been awarded three book awards.



# Black History Month

## **Community Night: Sip and Paint Edition**

*Fri, 2/1, 5:30-7:30 PM*

*Norris University Center, Louis Room, 1999 Campus Drive, Evanston*

## **Black Org Showcase**

*Sun, 2/3, 1:00-3:00 PM*

*Black House, 1<sup>st</sup> Floor Conference Room, 1914 Sheridan Road, Evanston*

## **Mental Health Panel**

*Mon, 2/4, 2:00-4:00 PM*

*Norris University Center, Armadillo Room, 1999 Campus Drive, Evanston*

## **HIV/AIDS Testing**

*Thurs, 2/7, 11:00AM-3:00 PM*

*Black House, 1<sup>st</sup> Floor Conference Room, 1999 Campus Drive, Evanston*

## **Afro Fusion Zumba**

*Thurs, 2/7, 6:45-8:00 PM*

*Henry Crown Sports Pavilion, Studio 2, 2311 Campus Drive, Evanston*

## **Food from the Soul**

*Mon, 2/18, 5:30-7:30 PM*

*Sheil Catholic Center, 2110 Sheridan Rd, Evanston*

## **Wealth is Health: A Financial Literacy Workshop**

*Mon, 2/25, 7:00-8:30 PM*

*Black House, 1<sup>st</sup> Floor Conference Room, 1914 Sheridan Road, Evanston*







# Music Performances



The Arts Circle. Your destination for the arts at Northwestern.

With world-class exhibitions and performances, the Arts Circle welcomes patrons, students, faculty, staff, alumni, and the larger community alike. It's easier than ever to take in many wonderful and diverse experiences, all on one campus.

## Symphonic Wind Ensemble

*Fri, 2/1, 7:30-9:30 PM*

*\$8 public, \$5 students*

*Pick-Staiger Concert Hall, 50 Arts Circle Drive, Evanston*

*Contact: Concert Management Office,*

*847-467-4000,*

*events.music@northwestern.edu*

*Mallory Thompson, conductor*

- Ralph Vaughan Williams, Toccata Marziale
- Gustav Holst, Second Suite in F
- Adam Gorb, Awayday
- Ralph Vaughan Williams, Scherzo alla marcia from Symphony No. 8
- Gustav Holst, Hammersmith



## Noah Cline's Flute Recital

*Sat, 2/2, 12:00-1:15 PM, free*

*Regenstein Hall of Music, Master Class Room, 60 Arts Circle Drive, Evanston*

*Contact: Concert Management Office, 847-467-4000,*

*events.music@northwestern.edu*

- Georges Hüe, Fantasia Eugène Bozza, Image Frank Martin, Ballade for Flute and Piano
- Charles-Marie Widor, Suite for Flute and Piano, Op. 34

## Northwestern University Chamber Orchestra

*Sat, 2/2, 7:30-9:30 PM*

*\$6 public, \$4 students*

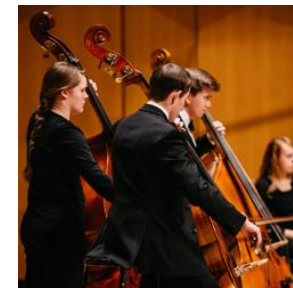
*Pick-Staiger Concert Hall, 50 Arts Circle Drive, Evanston*

*Contact: Concert Management Office,*

*847-467-4000, events.music@northwestern.edu*

*Robert G. Hasty, conductor*

- Gioachino Rossini, Overture to La scala di seta (The Silken Staircase)
- J. S. Bach, Orchestral Suite No. 1 in C Major
- Ludwig van Beethoven, Symphony No. 4 in B-flat Major



## Megan Pan Flute Recital

*Sun, 2/3, 8:30-9:45 PM, free*

*Regenstein Hall of Music, Master Class Room, 60 Arts Circle Drive, Evanston*

*Contact: Concert Management Office, 847-467-4000,*

*events.music@northwestern.edu*

- Johann Sebastian Bach, Sonata in B Minor, BWV 1030
- François Borne, Fantaisie brillante sur Carmen
- Shulamit Ran, East Wind
- Jacques Ibert, Concerto

## Jazz Small Ensembles: Bouncin' with Bud – The Music of Bud Powell

*Mon, 2/4, 7:30-9:30 PM*

*\$6 public, \$4 students*

*Ryan Center for the Musical Arts, McClintock Choral and Recital Room, 70 Arts Circle, Evanston*

*Contact: Concert Management Office, 847-467-4000,*

*events.music@northwestern.edu*

As one of the pioneers of the genre that became known as bebop, pianist-composer Earl Rudolph "Bud" Powell created a playing style that continues to influence jazz musicians today. His unprece-dented body of work is characterized by harmonic, melodic, and rhythmic originality that fascinates performers as well as listeners. For this concert, jazz students create new arrangements based on such Powell compositions as "Powell's Prances," "Bouncin' with Bud," and "Dance of the Infidels."





### Symphonic Band

Fri, 2/8, 7:30-9:30 PM

\$6 public, \$4 students

Pick-Staiger Concert Hall, 50 Arts Circle Drive, Evanston

Contact: Concert Management Office,

847-467-4000, [events.music@northwestern.edu](mailto:events.music@northwestern.edu)

Shawn Vondran, conductor

A colorful program of music for woodwinds, brass, and percussion.



### Contemporary Music Ensemble

Sat, 2/9, 7:30-9:30 PM

\$6 public, \$4 students

Ryan Center for the Musical Arts, Galvin Recital

Hall, 70 Arts Circle, Evanston

Contact: Concert Management Office,

847-467-4000, [events.music@northwestern.edu](mailto:events.music@northwestern.edu)

- Matt Marks, A Song for Wade
- Kate Soper, The Ultimate Poem Is Abstract
- John Adams, Chamber Symphony
- Ben Zucker, new work



### Alice Millar Birthday Concert

Sun, 2/10, 5:00-7:00 PM, free

Alice Millar Chapel, 1870 Sheridan Road, Evanston

Contact: Concert Management Office,

847-467-4000,

[events.music@northwestern.edu](mailto:events.music@northwestern.edu)

Two musical jewels adorn this year's Alice Millar Birthday Concert. Joseph Jongen's epic *Symphonie Concertante* offers luminous harmonies and blazing climaxes that unleash the full sonic power of organ and orchestra. Haydn's stunning *Missa Cellensis* in honorem Beatissimae Virginis Mariae blends stirring choral passages with exquisite solo writing.



### Jazz Orchestra: Jazz for Lovers

Thurs, 2/14, 7:30-9:30 PM

\$6 public, \$4 students

Ryan Center for the Musical Arts, Galvin Recital

Hall, 70 Arts Circle, Evanston

Contact: Concert Management Office,

847-467-4000, [events.music@northwestern.edu](mailto:events.music@northwestern.edu)

Happy Valentine's Day! Bring a loved one with you to celebrate and experience the power of Cupid. This love-song program by the Jazz Orchestra and guest vocalist Kenny Washington will touch hearts and warm souls with new arrangements of "The Nearness of You," "Stardust," "My Funny Valentine," and other jazz standards, all performed against the beautiful backdrop of Chicago's skyline.



### Keyboard Conversations: Chopin in Paris

Fri, 2/15, 7:30-9:30 PM

\$30 public, \$10 students

Pick-Staiger Concert Hall, 50 Arts Circle Drive,

Evanston

Contact: Concert Management Office,

847-467-4000, [events.music@northwestern.edu](mailto:events.music@northwestern.edu)

Jeffrey Siegel, piano

Stirring and deeply affecting works written after the patriotic Polish composer settled in Paris—Waltzes, Mazurkas, Polonaises, and the glorious *Barcarolle*.

- Waltz in A-flat Major, Op. 34, No. 1
- Etude in E Major, Op. 10, No. 3
- Mazurka in B-flat Major, Op. 7, No. 1
- Mazurka in C Minor, Op. 56, No. 3
- Polonaise in F-sharp Major, Op. 44
- Etude in C Minor, Op. 10, No. 12 ("Revolutionary")
- Etude in C-sharp Minor, Op. 25, No. 7
- *Barcarolle*, Op. 60





### Guitar Ensemble

Sat, 2/16, 7:30-9:45 PM

\$6 public, \$4 students

Ryan Center for the Musical Arts, Galvin Recital Hall, 70 Arts Circle, Evanston

Contact: Concert Management Office,

847-467-4000, [events.music@northwestern.edu](mailto:events.music@northwestern.edu)

Anne Waller, director

Music written and arranged for guitar



### Evening of Brass

Sun, 2/17, 7:30-9:30 PM

\$6 public, \$4 student

Pick-Staiger Concert Hall, 50 Arts Circle Drive, Evanston

Contact: Concert Management Office,

847-467-4000, [events.music@northwestern.edu](mailto:events.music@northwestern.edu)

Gail Williams, director

Music written and arranged for brass, featuring the Brass Ensemble and Bienen School brass faculty.



### New Music Performance Showcase

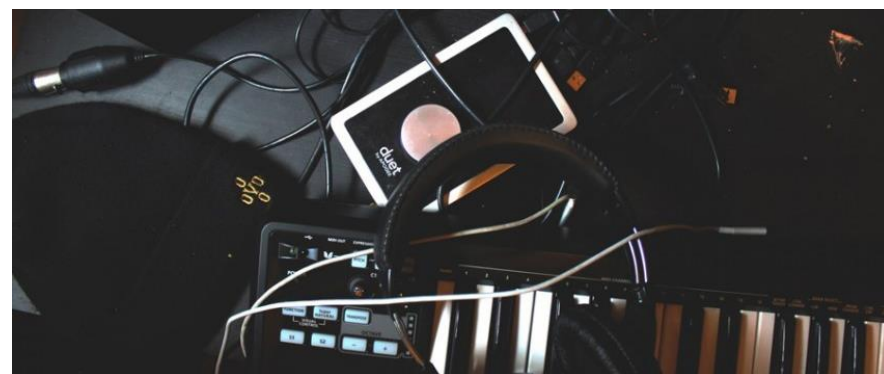
Mon, 2/18, 7:30-9:45 PM, free

Ryan Center for the Musical Arts, Galvin Recital Hall, 70 Arts Circle, Evanston

Contact: Concert Management Office,

847-467-4000, [events.music@northwestern.edu](mailto:events.music@northwestern.edu)

In this Institute for New Music concert, students perform contemporary music of their choice.



### Percussion Ensemble

Thurs, 2/21, 7:30-9:30 PM

\$6 public, \$4 student

Pick-Staiger Concert Hall, 50 Arts Circle Drive, Evanston

Contact: Concert Management Office,

847-467-4000, [events.music@northwestern.edu](mailto:events.music@northwestern.edu)

She-e Wu, director

An evening of eclectic rhythms.



### Symphonic Wind Ensemble

Fri, 2/22, 7:30-9:30 PM

\$8 public, \$5 student

Pick-Staiger Concert Hall, 50 Arts Circle Drive, Evanston

Contact: Concert Management Office, 847-467-4000,

events.music@northwestern.edu

Mallory Thompson, conductor; Matthew Kundler, euphonium

- Gioachino Rossini (arr. W. Sedlak), Overture to The Barber of Seville
- Jukka Linkola, Euphonium Concerto
- Jan Meyerowitz (ed. Erik Leung), Three Comments on War



### Baroque Music Ensemble

Sun, 2/24, 7:30-9:30 PM

\$6 public, \$4 student

Ryan Center for the Musical Arts, Galvin Recital Hall, 70 Arts Circle, Evanston

Contact: Concert Management Office,

847-467-4000, events.music@northwestern.edu

The Baroque Music Ensemble again ventures into the mid-18th century with delightful works by Johann Stamitz and brothers Joseph and Michael Haydn, the most prolific symphonic composers of their time. Experience these hidden treasures as played by an ensemble similarly proportioned to Haydn's own orchestra at Esterháza.

- Joseph Haydn, Symphony No. 42 in D Major and Violin Concerto in G Major
- Michael Haydn, Symphony No. 24 in A Major
- Johann Stamitz, Viola Concerto in G Major



### The Art of Transcription: Taimur Sullivan, Saxophone

Tues, 2/26, 7:30-9:30 PM

\$8 public, \$5 student

Ryan Center for the Musical Arts, Galvin Recital Hall, 70 Arts Circle, Evanston

Contact: Concert Management Office,

847-467-4000,

events.music@northwestern.edu

A member of the award-winning PRISM Quartet, Taimur Sullivan has appeared at Carnegie Hall, Lincoln Center, and the Knitting Factory in addition to engagements in Russia, China, England, Germany, and throughout Latin America. Joining Sullivan is Bienen faculty pianist

José Ramón Méndez, winner of top prizes in the Hilton Head International Piano Competition and New York's Frederic Chopin Competition. This program offers works—reconceived for soprano saxophone—by Claude Debussy, Marina Dranishnikova, and Nemmers Prize winners Jennifer Higdon and Steve Reich.

- Claude Debussy (arr. Taimur Sullivan), Prélude à l'après-midi d'un faune
- Jennifer Higdon, Poetic Soprano Sax (world premiere)
- Marina Dranishnikova (arr. Taimur Sullivan), Poem
- Steve Reich, New York Counterpoint



### Stravinsky's The Rake's Progress

Thurs, 2/28, 7:30-10:00 PM

\$18 public, \$8 student

Cahn Auditorium, 600 Emerson Street, Evanston

Contact: Concert Management Office,

847-467-4000,

events.music@northwestern.edu

Premiered in Venice in 1951, Igor Stravinsky's opera has a libretto by W. H. Auden and Chester Kallman loosely based on the eight William Hogarth paintings and engravings titled A Rake's Progress. Equal parts tragedy and farce, the tale follows the moral decline and fall of Tom Rakewell, who exchanges a simple life with sweetheart Anne Truelove for the worldly pleasures of London in the company of the devious Nick Shadow. Stravinsky's score deftly blends elements of 18th- and 20th-century music in this story of love, madness, and bargains with the devil.





## Theater

### [The Dolphin Show: Hello, Dolly!](#)

Fri, 2/1, 7:30 PM

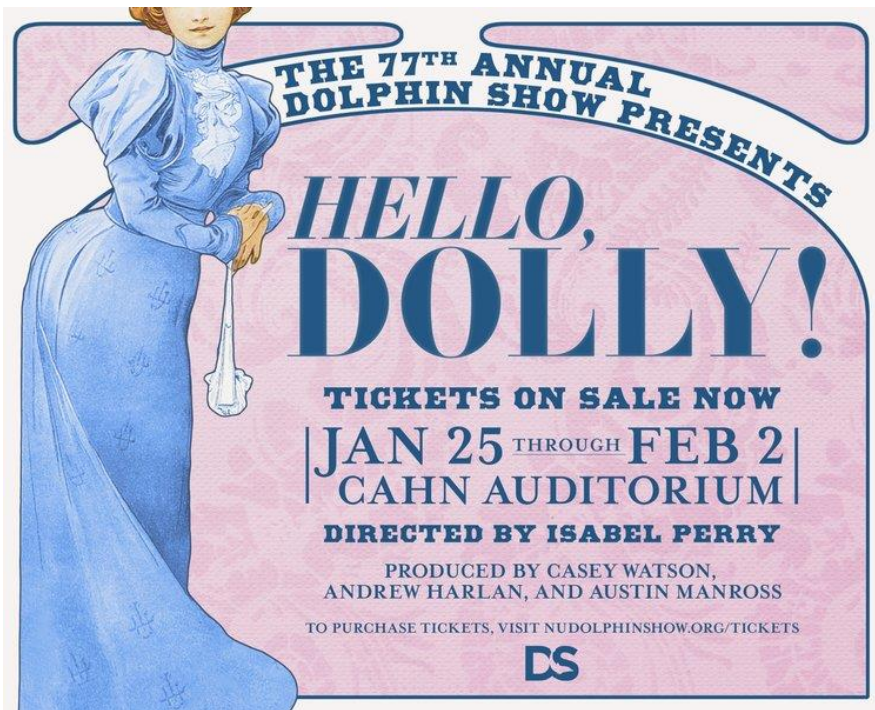
Sat, 2/2, 7:30 PM

\$10-\$36

Cahn Auditorium, 600 Emerson Street, Evanston

Contact: Dolphin Show Producers, [producers@nudolphinshow.org](mailto:producers@nudolphinshow.org)

On the heels of a hit Broadway revival and with a lush score by Jerry Herman, Hello, Dolly! tells the story of the effervescent socialite turned matchmaker Dolly Levi. From the streets of Yonkers to the lights of Broadway, from jubilant parades to lavish dining, from schemes and tricks to happy accidents, Dolly is full of shine and full of sparkle; it's a celebration of love and a tale of hope and home.



### [The Cherry Orchard](#)

Fri, 2/1, 2/7, 7:30 PM

Sat, 2/2, 2/9, 7:30 PM

Sun, 2/3, 2/10, 2:00 PM

\$10-\$25

Wirtz Center for the Performing Arts, Josephine Louis Theater, 20 Arts Circle Drive, 1949 Campus Drive; Evanston,

Contact: Wirtz Center Box Office, 847-491-7282, [wirtz@northwestern.edu](mailto:wirtz@northwestern.edu)

The Gayev family are sociable, intelligent, caring and hopelessly in debt. Unless they can find the funds, their huge estate, including its much-loved cherry orchard, will go to a mortgagee auction. The entrepreneurial son of their ex-farmhand offers them a solution, but they balk at his proposal. Racked by indecision and unable to comprehend the huge social changes on the horizon, they spend one last summer on their beautiful country property, conjuring memories of the past to mask their fears of the future.

Chekhov's endearing and everlasting tragicomedy in which a family's cross generational dispute about the future of their beloved estate creates a clash between socialism and capitalism, legacy and reality in this sharp new adaptation by Stephen Karam, described by New York Magazine as "among the very best of his generation of playwrights."



### The Wolves

Fri, 2/8, 8:00-10:00 PM

Sat, 2/9, 2:00-4:00 PM, 8:00-10:00 PM

Sun, 2/10, 2:00-4:00 PM

\$10 public, \$6 NU student (in advance)

The Wolves, a girls' indoor soccer team, practice drills as they prepare for a succession of games. As they warm up and talk about life, the girls navigate the politics of their personal lives as well as the politics of the larger world. Each team member struggles to negotiate her individuality while being a part of a group.

### Guys and Dolls

Fri, 2/15, 2/22, 3/1, 7:30 PM

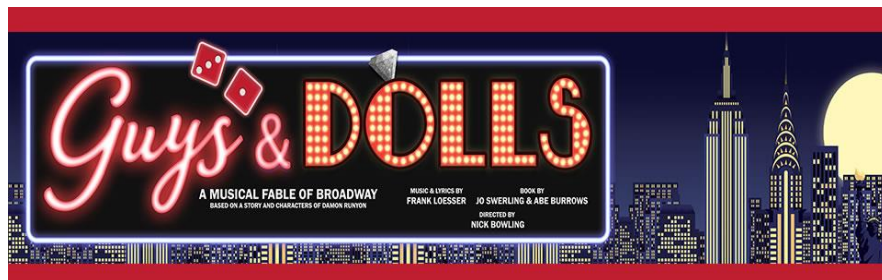
Sat, 2/16, 2/23, 3/2, 7:30 PM

Sun, 2/17, 2/24, 3/3, 2:00 PM

Thurs, 2/28, 7:30 PM

\$6-\$30

This classic romantic comedy comes to life with a modern lens that takes us from the heart of Times Square, to the cafes of Havana, Cuba, and even into the sewers of New York City and leaves us asking what it really means to be a Guy... or a Doll. Gambler Nathan Detroit tries to find the cash to set up the biggest craps game in town while the authorities breathe down his neck; meanwhile, his girlfriend and nightclub performer, Adelaide, laments that they've been engaged for fourteen years. Nathan turns to fellow gambler Sky Masterson for the cash, and Sky ends up chasing the straight-laced missionary Sarah Brown as a result; but Sarah's never encountered anyone quite like Sky. Jeff Award winner and TimeLine Associate Artistic Director Nick Bowling stages a fresh take on the beloved Broadway fable where mobsters, mayhem, and musical comedy light up the stage.



### National Theater Live: I'm Not Running

Sat, 2/16, 2:00-4:00 PM

\$10-\$20

Wirtz Center for the Performing Arts, Josephine Louis Theater, 20 Arts Circle Drive, 1949 Campus Drive; 10-30 Arts Circle Drive, Evanston  
Contact: Wirtz Center Box Office, 847-491-7282, wirtz@northwestern.edu

Pauline Gibson has spent her life as a doctor, the inspiring leader of a local health campaign. When she crosses paths with her old boyfriend, a stalwart loyalist in Labour Party politics, she's faced with an agonizing decision. What's involved in sacrificing your private life and your piece of mind for something more than a single issue? Does she dare?

Hare was recently described by The Washington Post as 'the premiere political dramatist writing in English'. His other work includes Pravda and Skylight, broadcast by National Theatre Live in 2014.



### Imagine U: When She Had Wings

Sun, 2/24, 2:00-3:00 PM

\$6-\$12

Wirtz Center for the Performing Arts, Hal & Martha Hyer Wallis Theater, 1949 Campus Drive, Evanston

Contact: Wirtz Center Box Office, 847-491-7282, wirtz@northwestern.edu

A fiercely determined young girl and aspiring pilot named B. has decided that she must realize her destiny to fly before turning ten. In a makeshift airplane built in her backyard treehouse she recounts the thrilling and legendary victories of her hero, Amelia Earhart. That night following a tremendous summer thunderstorm, a mysterious birdlike visitor takes up residence in her imaginary cockpit and B. wonders if the strange creature may be an incarnation of her hero and inspiration to finally take flight.





## Exhibits

### Social Regard by Paula Henderson

*Fri, 1/11 to Wed, 2/13, free  
Norris University Center, Dittmar Gallery,  
1999 Campus Drive, Evanston  
Contact: Debra Blade, 847-491-2348,  
d-blade@northwestern.edu*

In Paula Henderson's *Social Regard*, one branch of these works is concerned with gender specific social constructs shaped by the ubiquitous commercial and cultural representations of women internalized in the development of our sense of worth.



Dissimilarly, Paula's regard is echoed in the second series in this exhibition, *Groundwork(s)*, wherein her interest in abstraction is in its post-modern possibilities. In contrast to the self-contained formalism of modernist abstraction, she focuses on prosaic, schematic patterns of visual appeal, that operate simultaneously as social signifiers.

### NUPOC Gallery: Dynamic Sculptures by Terrence Karpowicz

*Fri, 2/1 to Fri, 3/1, free  
680 North Lake Shore Drive, Suite 1100, Chicago  
Contact: R. J. Garrick, 312-503-5700,  
r-garrick@northwestern.edu*

Terrence Karpowicz sculpts dynamic works of oak, cherry, ash and granite nesting in congruent harmony with stainless steel cubes spinning within walnut ellipses. Influenced by the theories and practices of Minimalism and Conceptualism, Karpowicz expresses in sculpture the interactions of wind, water, sunlight, and gravity on natural materials.



His work is defined by tension at the point of contact and the act of creating this tension. By joining irregular, organic materials to machine-tooled geometric shapes, he creates sculptures with actual or implied kinetic relationships among the elements and between the sculpture and its environment. The sculptor's life and his relationship with the world are defined through the interaction of disparate materials.

### Isaac Julien: The Leopard (Western Union: Small Boats)

*Sat, 1/26 to Sun, 4/14, free*

*Block Museum of Art, Mary and Leigh, 40 Arts Circle Drive, Evanston*

*Contact: Lindsay Bosch, lindsay.bosch@northwestern.edu*

Isaac Julien's groundbreaking 2007 video installation *The Leopard (Western Union: Small Boats)* presents a lyrical and visceral meditation on histories of African migration. Combining exquisite cinematography with elements of documentary, dance and musical performance, *The Leopard* juxtaposes all-too-familiar images of Mediterranean passage—Black bodies crowded in rafts, laid out in reflective blankets on Italian shores, drowning in tempestuous waters—with the tranquil spaces of European tourism and luxury.

Born in London in 1960 to Caribbean immigrant parents, Julien has crafted a singular and expansive body of work that moves effortlessly between experimental film and narrative cinema, theatrical exhibition and video installation. With characteristic formal beauty and critical depth, *The Leopard (Western Union: Small Boats)* synthesizes Julien's longstanding examination of Black diasporic and postcolonial experience in a moving and humanistic 20-minute work.

Presented in conjunction with the Block's *Caravans of Gold, Fragments in Time* exhibition, *The Leopard (Western Union: Small Boats)* challenges viewers to contemplate the inequities of globalization and the cycles of displacement and violence that have bound Europe and Africa for centuries.



### Caravans of Gold, Fragments in Time: Art, Culture and Exchange across Medieval Sahara Africa

Sat, 1/26 to Sun, 7/21, free

Block Museum of Art, Mary and Leigh, 40 Arts Circle Drive, Evanston

Contact: Block Museum of Art, 847-491-4000, [block-museum@northwestern.edu](mailto:block-museum@northwestern.edu)

Caravans of Gold, Fragments in Time challenges the widely held bias of a timeless Africa that is cut off from the dynamics of world history. This will be the first major exhibition to take stock of the material culture of early trans-Saharan trade and to offer strong evidence of the central but little-recognized role Africa played in medieval history. Among the diverse materials on view in the exhibition will be sculptures, jewelry, household and luxury objects, manuscripts, and architectural remnants. What unites these materials is their connections to routes of exchange across the Sahara Desert during the medieval period (eighth through 16th centuries).

Caravans of Gold, Fragments in Time addresses the shared history of West Africa, the Middle East, North Africa and Europe during the critical epoch of the eighth through 16th centuries, when West African gold fueled a global economy and was the impetus for the movement of things, people and ideas across the Sahara Desert to Europe, the Middle East and beyond. Because of the scarcity of surviving intact works from before the 16th century, the early history and material culture of Africa have rarely been the focus of major exhibitions.

More than 100 assembled artworks and archeological fragments will help audiences discover the far-reaching impact of historic trans-Saharan exchange and the overlooked role of West Africa at the forefront of these developments. Using objects as points of entry and inquiry, Caravans of Gold, Fragments in Time will interweave the art history, archaeology, history and comparative literature of trans-Saharan trade, situating it within a broad geographical and historical context.



## Art Discussions

### Avant Garde Africa: Manthia Diawara

Thurs, 2/7, 6:00-7:30 PM, free

Block Museum of Art, Mary and Leigh, 40 Arts Circle Drive, Evanston

Contact: Block Museum of Art, 847-491-4000, [block-museum@northwestern.edu](mailto:block-museum@northwestern.edu)

In conjunction with the screening of Malian filmmaker, art historian, and cultural theorist Manthia Diawara's *An Opera of the World*, join us as we launch the first program in "Avant Garde Africa"—a programmatic series exploring the practices of African art makers, critics, and scholars whose work implodes expectations for "African art." As practitioner and scholar, Diawara will reflect on issues that intersect with artistic practices in Africa and its extended diaspora today, followed by conversation with Performance Studies Professor D. Soyini Madison.





## Film Screenings

### Hale County This Morning, This Evening

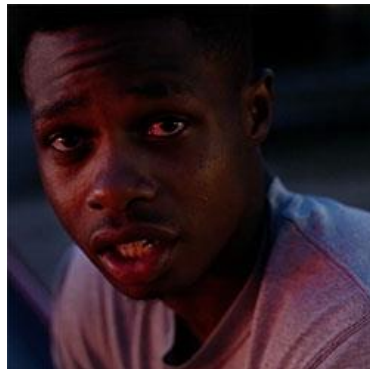
Fri, 2/1, 7:00-9:00 PM

Block Museum of Art, Mary and Leigh,  
40 Arts Circle Drive, Evanston

Contact: Block Museum of Art, 847-491-4000,  
block-museum@northwestern.edu

This insightful, moving and visually breathtaking documentary offers a glimpse into the emotional geography of African American lives in the South. Director RaMell Ross, an accomplished photographer and writer, was coaching youths in rural Alabama when he met Daniel and Quincey, two young men whose diverging paths into adulthood provide the inspiration for Hale County. From 2012 to 2017, Ross followed their experiences, and those of the community surrounding them, with an eye attuned to the everyday rhythms and quiet revelations of day-to-day existence. Edited with a lyrical, rather than a narrative sensibility, Hale County This Morning, This Evening has been celebrated as a creative breakthrough in nonfiction filmmaking, garnering major awards at Sundance and the Full Frame Film Festival for its sensitive, unconventional representations of working-class Black life.

In Person: filmmaker RaMell Ross



### Jane: An Abortion Service

Sat, 2/2, 1:00-3:00 PM, free

Block Museum of Art, Mary and Leigh,  
40 Arts Circle Drive, Evanston

Contact: Block Museum of Art, 847-491-4000,  
block-museum@northwestern.edu

In the four years before the Roe v. Wade ruling made abortion legal in the United States, a clandestine organization of Chicago women offered low-cost, safe and confidential services to over 11,000 women—the Jane Collective. This invaluable oral history tells that story through the words of women who founded, operated, and consulted the service. Directors Kate Kirtz and Nell Lundy skillfully entwine archival footage and forthright testimony to situate Jane alongside parallel movements for peace, civil, and women's rights, emphasizing the extraordinary sense of responsibility and commitment its work demanded. The result is a revelatory and inspiring document.



### An Opera of the World

Sat, 2/2, 1:00-3:00 PM, free

Block Museum of Art, Mary and Leigh,  
40 Arts Circle Drive, Evanston

Contact: Block Museum of Art, 847-491-4000,  
block-museum@northwestern.edu

A world-renowned scholar, filmmaker, and theorist of cultural hybridity, Manthia Diawara left Mali at the age of 19, emigrating to France and later to the United States. He returned to Mali in 2008 to film rehearsals for Bintou Were, a Sahel Opera that tells the story of northward migration. Diawara frames this moving performance between interviews (including discussions with filmmaker Alexander Kluge, novelist Fatou Diome and sociologist Nicole Lapiere), personal commentary, and archival footage that documents the cycles of migration throughout the 20th and 21st centuries. The result is a cinematic essay as free-ranging, and as inspiring, as the borderless society he imagines.



### Take Shelter

Fri, 2/6, 5:15-7:30 PM, free

RSVP

(adamsyvertsen2025@u.northwestern.edu)  
for pizza

Kresge Hall, Room 2350 (Kaplan Institute),  
1880 Campus Drive, Evanston

Contact: Jill Mannor, 847-467-3970,  
jill.mannor@northwestern.edu

Curtis LaForche lives in a small Ohio town with his wife Samantha and six-year-old daughter Hannah, who is deaf. Money is tight, and navigating Hannah's healthcare and special needs education is a constant struggle. Despite that, Curtis and Samantha are very much in love and their family is a happy one. Then Curtis begins having terrifying dreams about an encroaching, apocalyptic storm. He chooses to keep the disturbance to himself, channeling his anxiety into the obsessive building of a storm shelter in their backyard. But the resulting strain on his marriage and tension within the community doesn't compare to Curtis' private fear of what his dreams may truly signify. Faced with the proposition that his disturbing visions signal disaster of one kind or another, Curtis confides in Samantha, testing the power of their bond against the highest possible stakes.



### **Berlin, Bablylon**

*Fri, 2/8, 7:00-9:00 PM, free*

*Block Museum of Art, Mary and Leigh,  
40 Arts Circle Drive, Evanston*

*Contact: Block Museum of Art, 847-491-4000,  
block-museum@northwestern.edu*

*In German with English subtitles*

After Germany's reunification and the decision to relocate the country's capital to Berlin in 1990, the city faced one of the most sweeping architectural transformations in Western European history. Renowned urban planners and architects were now challenged to design a new, future-oriented city, while also honoring a past almost erased during and after World War II. Using archival and original footage, Hubertus Siegert presents both a documentary on this particular historical process, as well as a critical and poetic meditation on history itself. Berlin's famous experimental band Einstürzende Neubauten deliver an ambient and captivating industrial soundtrack.



### **The Stepford Wives**

*Thurs, 2/14, 7:00-9:00 PM, free*

*Block Museum of Art, Mary and Leigh,  
40 Arts Circle Drive, Evanston*

*Contact: Block Museum of Art, 847-491-4000,  
block-museum@northwestern.edu*

Joanna Eberhart experiences a major culture clash when she moves from New York City to the all too perfect town of Stepford, Connecticut. The women all keep their houses immaculate and the men all belong to a secretive club. Based on Ira Levin's (Rosemary's Baby, The Boys from Brazil) novel, The Stepford Wives's blend of suspense and social critique paved the way for films and television like Black Mirror and Jordan Peele's Get Out.



### **Rabbit à la Berlin + Wir Bleiben heir**

*Fri, 2/15, 7:00-9:00 PM, free*

*Block Museum of Art, Mary and Leigh,  
40 Arts Circle Drive, Evanston*

*Contact: Block Museum of Art,*

*847-491-4000,*

*block-museum@northwestern.edu*

**Rabbit à la Berlin** (Bartosz Konopka, 2009, Poland/Germany, BetaSP 52 min.)

*In German with English subtitles*

The fall of the Berlin Wall affected many demographics in different ways, demanding people adjust to a new life in a new post-communist world and reunified Germany. Bartek Konopka's Oscar-nominated documentary *Rabbit à la Berlin* tells the allegorical story of Berlin's wild rabbit population, which had inhabited the death zone of the wall, reflecting on various forgotten, ignored or marginalized peoples during and after the Cold War. Assembling archival footage from multiple sources, the film dives into the perspective of the rabbits in their own habitat and a new Europe.



### **Wir bleiben hier**

(Dirk Otto, 1990, Germany, digital, 32 min.)

*In German with English Subtitles.*

Dirk Otto's *Wir bleiben hier* ("We're staying here") is centered on the peculiar situation of Vietnamese immigrants in Eastern Germany after the fall of the wall. After constituting the largest immigrant group in an otherwise homogeneous East-German population, they suddenly found themselves in an undefined limbo state when their work and residence permits were not valid in the new 'host country.' Otto, an Eastern-German filmmaker himself, closely follows one family in particular—a young couple and their daughter, whom he met after immersing himself in Berlin's Vietnamese community. He follows them to Hamburg and back to Berlin, capturing their struggle in a sober, observational mode, and interviews them about their decision and struggle to "stay here," in spite of the political shifts.

Subtitle translation by Barbara Stone



### Wings of Desire

Thurs, 2/21, 7:00-9:00 PM, free  
Block Museum of Art, Mary and Leigh,  
40 Arts Circle Drive, Evanston  
Contact: Block Museum of Art, 847-491-4000,  
[block-museum@northwestern.edu](mailto:block-museum@northwestern.edu)

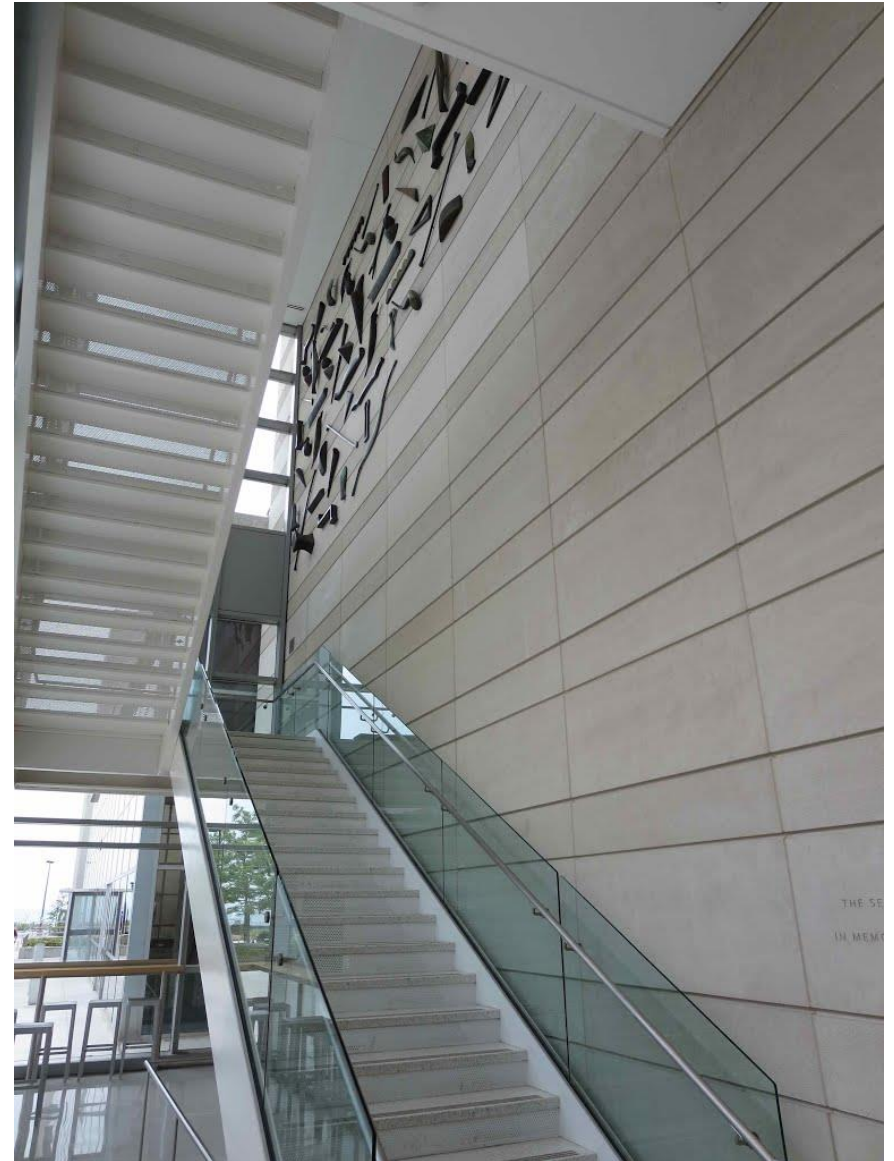
In Wim Wenders's iconic Berlin film *Wings of Desire*, two invisible angels (played by Bruno Ganz and Otto Sander) watch and listen in on the city's diverse population. Wandering through the city, they encounter many different people and their intimate thoughts and feelings. *Wings of Desire* is an audio-visual tour de force of immense poetic power, with the ever-present Berlin Wall as an icon of grief. Often been read as an allegorical precursor to Berlin's reunification a few years later, the film figures the desire for human connection in a city of architectural and psychological isolation. In German with English Subtitles.



### What Time Is It There

Wed, 2/27, 7:00-9:00 PM, free  
Block Museum of Art, Mary and Leigh,  
40 Arts Circle Drive, Evanston  
Contact: Block Museum of Art, 847-491-4000,  
[block-museum@northwestern.edu](mailto:block-museum@northwestern.edu)

Droll, deadpan, and deliberate, Tsai Ming-Liang's *What Time Is It There?* was instantly recognized upon its 2001 release as a landmark of contemporary world cinema, and has only grown in poignancy since. The film follows parallel stories of isolation and longing in an era of globalization. Hsiao Kang is a street vendor living with his recently-widowed mother in Taipei; Shiang-Chyi is a young woman who buys a dual-time watch from him before traveling to Paris. As Hsiao Kang begins to obsessively change every clock he sees to Paris time, Shiang-Chyi struggles to find human connection in an unfamiliar city. Tsai's laconic, long-take style yields rich rewards for attentive viewers, delivering gorgeous images, wry humor, and a rare depth of feeling.



# Leisure and Social

## Norris University Center Mini Workshops

These one-day workshops are great to attend with friends to learn a new skill or walk away with some delicious recipes!

- Learn to Knit (Sat, 2/23, 1:00-4:00, \$16)
- Workshop Event Packages
  - Privately held group workshops are available for purchase.

Register online at [www.nbo.northwestern.edu](http://www.nbo.northwestern.edu), by phone at 847-491-2305, or in person at the Norris Box Office, 1999 Campus Dr., Evanston. Email [minicourses@u.northwestern.edu](mailto:minicourses@u.northwestern.edu) for more information. All registrants must be 15 years old.

## Around Campus

### Cheap Lunch

*Wednesdays, 12:00– 1:30 PM*

*\$2 student/\$3 non-student*

*Sheil Catholic Center, 2110 Sheridan Rd., Evanston*

*Contact: Teresa Corcoran, [t-corcoran@northwestern.edu](mailto:t-corcoran@northwestern.edu), 847-328-4648*

Join the fun with grilled hot dogs, brats, burgers, chips, soda, salad, and dessert for \$2 a student or \$3 for non-students.

### International Spouse Conversation Hour

*Wednesdays, 1:00-2:30PM, adult only group*

*Thursdays, 10:00-11:30AM, children-friendly group*

*International Office Conference Room, 630 Dartmouth Place, Evanston*

*Contact: Mary Helen Albright, [maryandlucas@comcast.net](mailto:maryandlucas@comcast.net), 847-868-4979*

International spouses of faculty, staff, postdocs, and students are invited to enjoy free coffee and conversation. Children are welcome.

### Japanese Coffee Hour

*Fri, 2/1, 2/8, 2/15, 2/22, 3:30-4:30 PM*

*Kresge Hall, 4438, 1880 Campus Drive, Evanston*

*Contact: Department of Asian Languages and Cultures,*

*[asianlac@northwestern.edu](mailto:asianlac@northwestern.edu), 847-491-5288*

The Japanese instructors will host the Japanese Language Coffee Hour once a week. This Coffee Hour will be a great place for you to practice conversation in a relaxed informal setting. You will meet fellow Japanese learning students across various language levels. We often have Japanese native speakers as guests

## [Dearborn Observatory Public Viewing](#)

*Fridays, 8:00-9:00 PM (Reservation only) 9:00-10:00 PM (Walk-in), free*

*Dearborn Observatory, 2131 Tech Drive, Evanston*

*Contact: Yassaman Shemirani ,*

*847-491-7650, [yassaman.shemirani@northwestern.edu](mailto:yassaman.shemirani@northwestern.edu)*

The Dearborn Observatory is open for public viewing every Friday night from 9 to 10 PM during the fall and winter months (Oct-Jan). The sessions are free and open to all. All visitors should note that the dome is neither heated nor air-conditioned so please dress appropriately. Friday evening sessions are held "rain or shine." Unfortunately, the Dearborn is not ADA-accessible. Several staircases must be climbed in order to reach the telescope.

**CIERRA Astronomer Evenings** are special programs that take place on the last Friday of the month at the observatory. Meet astronomers from Northwestern's Center for Interdisciplinary Exploration and Research in Astrophysics. Different experts host each month and are available to answer your astronomy questions. The evenings include a 10-minute introduction to a topic, followed by an open Q&A session and interactive demonstrations. Stop by any time during the two-hour public observing window. Children are welcome. The talks are free and open to all. No reservation is needed.

For more information go to

<http://www.physics.northwestern.edu/observatory/>.

To make a reservation go to <http://sites.northwestern.edu/dearborn/>.

## [The Alumnae of Northwestern University](#)

The Alumnae offers intellectually stimulating, noncredit courses to the public at a modest cost. Each year more than 3,000 people enroll in these courses, taught on the Evanston campus by renowned University faculty.

For more information about upcoming courses, visit The Alumnae website

[www.nualumnae.org](http://www.nualumnae.org).

## [Community Council for International Students \(CCIS\)](#)

*The International Office, 630 Dartmouth Place, Evanston*

*Contact: Sylvia Alvino, [sylalvino@yahoo.com](mailto:sylalvino@yahoo.com), 847-328-7516*

Are you interested in volunteering to spend some time with an NU international student? CCIS is dedicated to helping NU students and pos-docs from other countries during their stay at NU. CCIS volunteers work toward a mutual sharing of values, cultural experiences, and interests. Please contact Sylvia Alvino for more information.



## Norris Outdoors



Norris University Center offers a wide range of equipment available to rent for your outdoor adventures including:

- camping equipment (tents, backpacks, etc.)
- grills and stoves sports gear (Frisbees, volleyball and net, etc.)

Visit Norris Outdoors for package deals and a full list of equipment. The office is open Monday to Sunday, 12:30 – 6:00 PM, or at 847-491-2345. They can also be found at [www.northwestern.edu/norris/arts-and-recreation/norrisoutdoors](http://www.northwestern.edu/norris/arts-and-recreation/norrisoutdoors) or on Facebook and Twitter. Items must be requested at least 5 days in advance.



## ARTica



The Norris University Center's craft shop offers the materials to make buttons, bind books, laminate, screen print, sew, and space to work on art projects.

### Winter 2019 Hours:

Monday - Friday: 12:30 - 10:00 PM  
Saturday - Sunday: 12:30 - 6:00 PM  
\*Holiday hours may vary

## Studio Usage

### Ceramics Membership

*Patrons must pass a ceramics knowledge quiz to be eligible for membership.*

- Ceramic Quarterly Membership
  - \$75 NU Community (Student, Faculty, Staff)
  - \$145 for Public/Non-NU
- Ceramic 3 day Project Membership
  - \$35 NU Community (Student, Faculty, Staff)
  - \$55 for Public/Non-NU
- Clay
  - \$2.50 /1 lbs Brown Clay
  - \$45 /25 lbs Bulk Brown or White Clay

### Darkroom Membership

*Patrons must pass a darkroom knowledge quiz to be eligible for membership.*

- Darkroom Quarterly Membership:
  - \$75 NU Community (Student, Faculty, Staff)
  - \$145 Public/Non-NU
  -
- Darkroom 1 Day Membership:
  - \$20 NU Community (Student, Faculty, Staff)
  - \$35 Public/Non-NU

**Northwestern Music Academy**  
[Learn more online](#)



For more than 70 years, Northwestern University's Music Academy in Evanston has provided music instruction to children and adult students from surrounding communities and the greater Chicago and Northwest Indiana area.

**Other Courses**  
(offered throughout the school year)

[Piano and Organ](#)

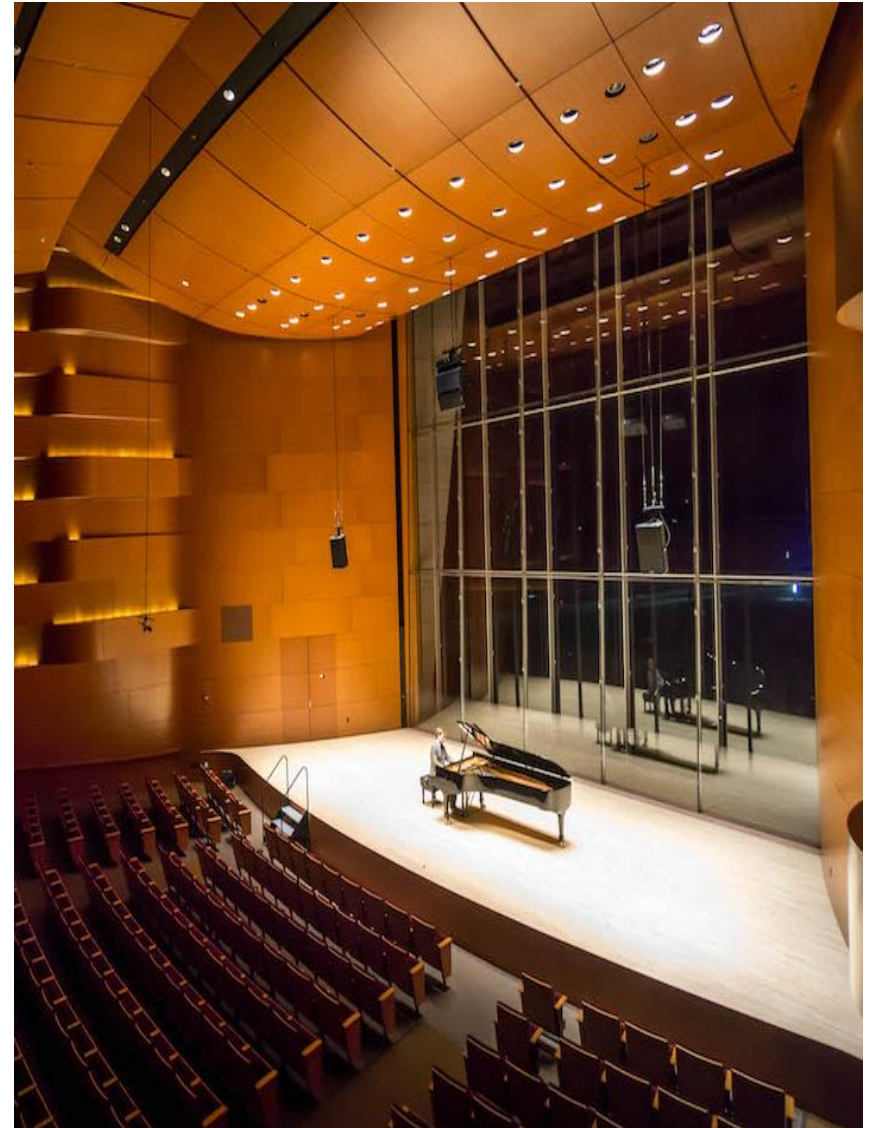
The Music Academy Piano Division offers pre-piano class, which serves as an introduction to more formal piano instruction: keyboard instruction in two tracks for students ages 6 to 18, and instruction for adults. Pre-piano serves as an introduction to more formal piano instruction. Keyboard instruction for children begins with pre-staff music and expands to landmark-based intervallic reading. After the first year of study, most children participate in the Illinois State Music Teacher's Association curriculum assessment, where they demonstrate skills and receive certificates and pins for participation.

[Strings](#)

The String Division offers private lessons in violin, viola, and cello, with goals of both providing musical instruction and instilling a love of music and of learning music. The division believes that all children can learn to their potential when placed in an environment that includes clear instruction, an involved parent, and regular opportunities to listen to and perform.

[Voice](#) (adults)

Adult voice classes concentrate on basic vocal technique including registers, breathing, range, and diction. Unique teaching methods and small class size (4 to 5 students) produce good results after a short period of time. The class is recommended not only for people interested in singing, but also for adults who would like to improve their speaking voice. Private voice lessons also available.





# Religious Services

Northwestern is proud to have a vibrant community embracing diverse religious beliefs. We have regular services on campus as well as events for religious observances. For general inquiries, contact the Office of Religious and Spiritual Life at 847-491-7256 located at 1870 Sheridan Rd. on our Evanston campus.

## Christian – Protestant

Christian worship in a broad Protestant tradition is held most Sundays of the academic year at 11:00 AM – 12:00 PM at the Alice Millar Chapel, 1870 Sheridan Rd.

## Christian – Catholic

Daily Mass is celebrated Mondays to Fridays at 5:00–5:30 PM, On Sundays, Masses are held at 9:30–10:30 AM, 11:00 AM–12:00 PM, 5:00–6:00 PM, and 9:00–10:00 PM, Services are at the Sheil Catholic Center Chapel, 2110 Sheridan Rd. Sheil also offers other sacraments, prayers, fellowship, and retreats. Visit <http://www.sheil.northwestern.edu/> for a complete list of events.



## Jewish

The Fiedler Hillel leads Reform and Conservative Shabbat services every Friday evening from 6:00 – 7:00 PM, followed by a free dinner, at 629 Foster Street. Orthodox services are held at the same place on Saturday mornings from 9:30 – 10:30 AM. A full list of events is at [www.northwesternhillel.org](http://www.northwesternhillel.org)



## Muslim

Jumah, Muslim prayers on Fridays, are held every Friday from 1:10 – 2:00 PM, On the Evanston campus, Jumah is at Parkes Hall, 1870 Sheridan Rd., Room 122. In Chicago, it is at the Lurie Building, 303 E. Superior, in the Grey Seminar Room.

Contact: Jill Norton, [jill-brazel@northwestern.edu](mailto:jill-brazel@northwestern.edu)

## Spirituality

Northwestern also offers opportunities for the community to engage in interfaith fellowship or spiritual exploration.

## Holidays

- Feb. 15: Parinirvana Day (Buddhism)



# Northwestern Wildcat Athletics

The Northwestern Wildcats are Chicago's Big Ten team. Come cheer on the Wildcats at home or on the road.

Sports in season this winter are:

- basketball – men's
- basketball – women's
- wrestling – men's
- fencing – women's
- swimming and diving -men's
- swimming and diving – women's
- tennis – men's
- tennis – women's
- golf – men's
- golf – women's
- cross country – women's
- baseball – men's
- lacrosse – women's
- softball – women's

There are two easy ways to purchase tickets, listed below. Tickets are typically mailed two to three weeks prior to a home event unless the will call delivery method is selected.

- Online at [www.nusports.com](http://www.nusports.com)
- Calling or visiting the ticket office at 888-467-8775, Monday to Fridays from 9:00 AM – 5 :00 PM

You can also email the office at [cat-tix@northwestern.edu](mailto:cat-tix@northwestern.edu) and follow them on Twitter using the handle @NU\_Tickets.



## **Basketball – Men's**

Home games are at the Welsh Ryan Arena. Please go online at [www.nusports.com](http://www.nusports.com) or call the ticket office at 888-467-8775 to ask about tickets.



Date and Time	Game	Coverage
2/4, 7:00 PM	Penn State	Fs1
2/10, 5:30 PM	at Iowa	BTN
2/13, 6:00 PM	Rutgers	BTN
2/16, 7:30 PM	at Nebraska	BTN
2/20, 7:30 PM	at Ohio State	BTN
2/23, 7:30 PM	Wisconsin	BTN
2/28, 8:00 PM	Minnesota	ESPN/ESPN2/U
3/3, 5:30 PM	at Illinois	BTN
3/6, 8:00 PM	Ohio State	BTN
3/9, 1:30 PM	Purdue	BTN
3/13-3/17, TBD	Big 10 Tournament	



### **Basketball – Women’s**

Home games are at Welsh Ryan Arena. Please go online at [www.nusports.com](http://www.nusports.com) or call the ticket office at 888-467-8775 to ask about tickets.



Date and Time	Game
2/3, 3:30 PM	Ohio State
2/7, 5:30 PM	at Maryland
2/10, 1:00 PM	at Minnesota
2/14, 7:00 PM	Penn State
2/17, 1:00 PM	at Purdue
2/21, 7:00 PM	Nebraska
2/26, 7:00 PM	Indiana
3/3, 2:00 PM	at Iowa



### **Wrestling – Men’s**

Home games are at Welsh Ryan Arena. Please go online at [www.nusports.com](http://www.nusports.com) or call the ticket office at 888-467-8775 to ask about tickets.

Date and Time	Game
2/3, 12:00 PM	against Ohio State
2/8, 6:00 PM	at Michigan State
2/10, 1:00 PM	at Ann Arbor
2/15, 7:00 PM	against Illinois
2/23, 2:00 PM	against SIUE
3/9-3/10, All Day	Big Ten Championship at Minneapolis
3/21-3/23, All Day	NCAA Championships at Pittsburgh

### **Fencing – Women’s**

Home games are at Northwestern’s Patten Gym. Please go online at [www.nusports.com](http://www.nusports.com) or call the ticket office at 888-467-8775 to ask about tickets.

Date and Time	Game
2/2-2/3	Northwestern Duals
2/10	Duke Meet
2/15-2/18	Junior Olympics at Denver, CO
2/23-2/24	Midwest Conference Championships at Columbus, OH
3/9	NCAA Regional at South Bend, IN
3/23-3/24	NCAA Championships at Cleveland, OH
4/12-4/15	USA Fencing NAC

### **Swimming and Diving – Men's**

Home games are at Norris Aquatics Center in the Henry Crown Sports Pavilion on Northwestern's campus.

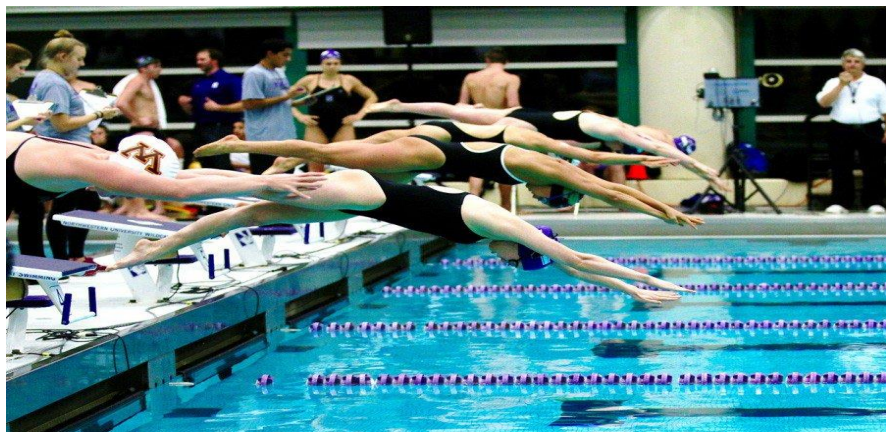


Date and Time	Game
2/1-2/2	Minnesoda/Purdue Tri-Dual
2/20-2/23	Big Ten Championship at Bloomington, Ind.
3/20-23	NCAA Championships at Austin, Texas

### **Swimming and Diving – Women's**

Tickets are typically \$7 for adults, \$3 per person for groups of 15 or more, and \$5 for youth. Home games are in the Henry Crown Sports Pavilion on Northwestern's campus.

Date and Time	Game
2/1-2/2	Minnesoda/Purdue Tri-Dual
2/20-2/23	Big Ten Championship at Bloomington, Ind.
3/20-23	NCAA Championships at Austin, Texas



### **Tennis- Men's**

Home games are at Vandy Christie Tennis Center. Please go online at [www.nusports.com](http://www.nusports.com) or call 888-467-8775 for more information.



Date and Time	Game
2/3, 12:00 PM, 5:00 PM	against Duke/Chicago State
2/7, 6:00 PM	against Oklahoma State
2/9, 12:00 PM	against Harvard
2/10, 12:00 PM	against Purdue
2/10, 6:30 PM	at Chicago State
2/17, TBD	at Notre Dame
2/24, 11:00 AM	at Columbia
3/1, 5:00 PM	at Indiana
3/3, TBD	at Louisville
3/8, 6:00 PM	at UIUC
3/10, 12:00 PM, 5:00 PM	against Texas Tech/UIC
3/30, 12:00 PM	against Iowa
3/31, 12:00 PM	against Nebraska

### **Tennis- Women's**

Home games are at Vandy Christie Tennis Center. Please go online at [www.nusports.com](http://www.nusports.com) or call 888-467-8775 for more information.

Date and Time	Game
2/3, 1:00 PM	at Vanderbilt
2/8-2/11, TBD	ITA National Indoors at Seattle
2/8, TBD	against Oregon
2/15, 5:00 PM	against Baylor
2/17, 12:00 PM	at Georgia Tech
2/22, 5:00 PM	against Iowa
2/24, 11:00 AM	against Pepperdine



## Golf- Men's



Date and Time	Game
2/8-2/9	Big Ten Match Play
2/18	The Prestige at PGA West
3/9-3/10	Desert Mountain Collegiate
3/28-3/30	The Goodwin
4/5-4/7	Mason Rudolph Collegiate
4/13-4/14	Boilermaker Invitation
4/26-4/28	Big 10 Championships
5/13-5/15	NCAA Regionals
5/24-5/29	NCAA Championships

## Golf- Women's

Date and Time	Game
2/10-2/12	Lady Puerto Rico Classic
2/25-2/26	Bruin/Wave Invitational
3/8-3/10	Darius Rucker Intercollegiate
3/29-3/31	PING ASU Invitational
4/7-4/9	Silverado Showdown
4/19-4/21	Big Ten Championships
5/6-5/8	NCAA Regionals
5/17-5/22	NCAA Championships

## Cross Country – Women's



Date and Time	Game
2/1-2/2	Meyo Invitational
2/2	USATF Cross Country Championships
2/8-2/9	Grand Valley State Big Meet
2/8	Iowa State Classic
2/16	Alex Wilson Invitational
2/24	BU Last Chance Invite
3/8-3/9	NCAA Indoor Championships
3/28-3/30	SF State Distance Carnival
3/29-3/30	Stanford Invitational
4/6	Benedictine Invitational
4/16-4/20	Mt. Sac Relays
4/19-4/20	Bryan Clay Invitational
5/3	NIU Classic
5/11	Oxy Invite
5/23-5/25	NCAA West Regional Preliminary
6/5-6/8	NCAA Outdoor Championships





## ♣ **Baseball- Men's**

Home games are at Rocky and Berenice Miller Park. Please go online at [www.nusports.com](http://www.nusports.com) or call 888-467-8775 for more information.

Date and Time	Game
2/15, 7:00 PM	at BYU
2/16, 2:00 PM, 6:00 PM	at BYU
2/17, 12:00 PM	at Cal
2/22, 3:00 PM	at Duke
2/23, 12:00 PM	at Duke
2/24, 12:00 PM	at Duke
3/1, 3:00 PM	at Georgia Tech
3/2, 1:00 PM	at Georgia Tech
3/3, 12:00 PM	at Georgia Tech
3/5, 3:00 PM	against UIC
3/8, 6:30 PM	at Missouri
3/9, 2:00 PM	at Missouri
3/10, 1:00 PM	at Missouri
3/15, 3:00 PM	at Kent State
3/16, 12:00 PM, 3:00 PM	at Kent State
3/22, 3:00 PM	against Purdue
3/23, 2:00 PM	against Purdue
3/24, 1:00 PM	against Purdue
3/27, 3:00 PM	at Chicago State
3/29, 3:00 PM	against San Jose State
3/30, 2:00 PM	against San Jose State
3/31, 12:00 PM	against San Jose State
4/2, 3:00 PM	against Chicago State
4/3, 6:30 PM	at UIC
4/5, 5:35 PM	at Ohio State
4/6, 2:05 PM	at Ohio State
4/7, 12:05 PM	at Ohio State
4/9, 6:00 PM	at Milwaukee
4/12, 3:30 PM	against Maryland
4/13, 2:00 PM	against Maryland
4/14, 12:00 PM	against Maryland
4/16, 7:05 PM	at Notre Dame
4/19, 3:00 PM	at Michigan
4/20, 1:00 PM	at Michigan
4/21, 12:00 PM	at Michigan
4/23, 3:30 PM	against UIC
4/26, 5:35 PM	at Michigan State
4/27, 3:05 PM	at Michigan State

4/28, 12:05 PM  
 4/30, 3:30 PM  
 5/1, 7:05 PM  
 5/4, 2:00 PM  
 5/5, 1:00 PM  
 5/6, 3:30 PM  
 5/10, 1:00 PM  
 5/11, 12:00 PM  
 5/12, 11:00 AM  
 5/14, 3:30 PM  
 5/16, 3:30 PM  
 5/17, 3:30 PM  
 5/18, 1:00 PM  
 5/22-5/26, TBD

at Michigan State  
 against Illinois State  
 against Iowa  
 against Nebraska  
 against Nebraska  
 against Nebraska  
 at Rutgers  
 at Rutgers  
 at Rutgers  
 against Notre Dame  
 against Minnesota  
 against Minnesota  
 against Minnesota  
 Big Ten Tournament



## ♣ **Lacross- Women's**

Home games are at Ryan Fieldhouse and Martin Stadium. Please go online at [www.nusports.com](http://www.nusports.com) or call 888-467-8775 for more information.

Date and Time	Game
2/1, 2:30 PM	Colorado (Ryan Fieldhouse)
2/8, 7:00 PM	Louisville (Ryan Fieldhouse)
2/15, 7:00 PM	Dartmouth (Ryan Fieldhouse)
2/17, 12:00 PM	Duke (Ryan Fieldhouse)
2/24, 11:00 AM	Syracuse
2/25, 12:00 PM	Canisius
3/2, 11:00 AM	North Carolina
3/9, 7:00 PM	Boston College (Ryan Fieldhouse)
3/14, 7:00 PM	Rutgers
3/23, 7:00 PM	Marquette
3/28, 7:00 PM	Penn State
3/31, 1:00 PM	Penn
4/6, 9:00 AM	Johns Hopkins
4/11, 7:00 PM	Maryland (Martin Stadium)
4/18, 4:00 PM	Michigan (Martin Stadium)
4/20, 6:00 PM	Notre Dame
4/25, 2:00 PM	Ohio State
5/3-5/5, TBD	Big 10 Championships
5/11-12, TBD	NCAA First Round
5/18-5/19, TBD	NCAA Quarterfinals



# Recreation

Northwestern Recreation offers opportunities to discover and maintain a healthy lifestyle to members of our community through a diverse array of recreational activities. A full list of activities can be found online at [www.nurecreation.com](http://www.nurecreation.com). For general questions, call 847-491-4300.

## Facilities

Membership to Northwestern Recreation offers access to a well-equipped facility with knowledgeable staff to assist you.

In addition to the highlighted offerings in this guide, the 95,000 square foot Henry Crown Sports Pavilion, Norris Aquatics Center, and Combe Tennis Center have space and amenities for all types of exercise, including: space to play team sports like basketball courts, group exercise, cardiovascular equipment, strength and weight-training equipment, an Olympic-sized pool, and a wellness suite for fitness assessments and massage.

On top of the benefits from membership to Northwestern Recreation, there are even more ways to be healthy. Additional fees apply for personal training, private courses, massage, and the pro shop.

## Location and Hours

The Henry Crown Sports Pavilion, which links to other facilities in Northwestern Recreation, is at 2311 Campus Drive, Evanston. Ample parking is available at the North Campus Parking Garage.

Hours for Henry Crown Sports Pavilion (hours during academic breaks differ, and hours for the pool and other areas vary):

Monday – Thursday	6:00 AM – 11:00 PM
Friday	6:00 AM – 10:00 PM
Saturday	8:00 AM – 9:00 PM
Sunday	8:00 AM – 10:00 PM

## Membership

Community members, Northwestern employees, and university alumni are invited to join. There is a one-time registration fee per household of \$100.

Type	Annual	Monthly	Day passes before 3 pm	Day passes after 3 pm and weekends
Individual	\$500	\$50	\$12	\$18
Spouse	\$500	\$50	\$12	\$18
Child (each)	\$260	\$30	\$9 \$0 (under 6)	\$16 \$0 (under 6)

Rates for Northwestern faculty, staff, and their families:

Type	Annual	Monthly	Day passes before 3 pm	Day passes after 3 pm and weekends
Employee	\$400	\$42	\$9	\$16
Employee spouse	\$400	\$42	\$9	\$16
Employee child	\$260	\$30	\$9 \$0 (under 6)	\$16 \$0 (under 6)

Join Northwestern Recreation online at [www.nurecreation.com/membership](http://www.nurecreation.com/membership), by calling the membership office at 847-491-4303, or in person. Children 15 years old and under must be accompanied by a parent, and the child rate only applies if the parent is also a member. Complimentary trial memberships for one week are available upon request. Payment is accepted by cash, check, or credit card.

## Intramurals

The intramural sports program strives to offer students, staff, and faculty opportunities to have fun. Over 2,000 unique participants and 25% student involvement every year makes the program enjoyable and while competitive. Fall intramurals are dodgeball, flag football, and volleyball. Winter has basketball and floor hockey. In the spring, there is soccer, softball, and ultimate Frisbee.

## Tennis

- *Junior and Adult Lessons* – Throughout the year, group lessons are offered for all ages and skill levels. Private lessons for 1-2 people are also available.
- *USTA Teams* – Northwestern hosts 8 USTA league teams. They participate in weekly evening practice and compete in weekend matches against other clubs.
- *Open Court* – Reserve indoor courts for up to 1.5 hours any day of the week starting from 6:30 AM Monday to Friday or 8:00 AM on the weekends by calling 847-491-4312. Play time for indoor courts is unlimited as long as there is no one waiting to play. Outdoor courts are first-come-first-served.

## Swimming

Contact: Ed Martig, [e-martig@northwestern.edu](mailto:e-martig@northwestern.edu)

The Norris Aquatics Center offers a comprehensive program of fitness, instruction, recreational activities, diving, scuba, and life-saving courses. Membership to Northwestern Recreation is not required for aquatics programs. Find more information or register for programs at [www.nurecreation.com/aquatics](http://www.nurecreation.com/aquatics)

The pool is open every day for recreational swim except when it hosts swim meets. Lanes are available for laps or free swim. Hours when classes are in session are:

Monday – Thursday	6:00 AM – 2:00 PM, 5:30 – 10:00 PM
Friday	6:00 AM – 2:00 PM, 5:30 – 9:00 PM
Saturday	8:00 AM – 8:00 PM
Sunday	8:00 AM – 6:00 PM

\*hours may differ for special holidays

Classes are offered in three groups:

- *Parent-Tot Swim Lessons (ages 6 mo. to 3 years)* – This introduces children to the water with the support of a parent.
- *Youth Swim Lessons (ages 4-12)* – These focus on giving children the swimming skills and safety knowledge to enjoy the water. Class sizes are limited to five students per instructor.
- *Adult Swim Lessons (ages 18+)* – Classes are in three levels.

There are two types of fees:

- NU Student/Member
- Non-Member

Class	Day/Dates	Time	Fee
<b>Winter</b>			
Parent Tot	Sundays, 1/20 – 3/3	12:15 – 12:45 PM	\$74/84
Youth, all levels	Sundays, 1/20 – 3/3	1:00 – 1:45 PM	\$84/94
Youth, all levels	Sundays, 1/20 – 3/3	2:00 – 2:45 PM	\$84/94
Youth, levels 1-3	Wednesdays, 1/23 – 3/6	4:15 – 5:00 PM	\$84/94
Youth, levels 4-5	Wednesdays, 1/23 – 3/6	5:15 – 6:00 PM	\$84/94
Adult, beginner	Sundays, 1/20 – 3/3	3:00 – 3:30 PM	\$69/79
Adult, beginner	Wednesdays, 1/23 – 3/6	6:10 – 6:40 PM	\$69/79
Adult, interm.	Sundays, 1/20 – 3/3	3:40 – 4:10 PM	\$69/79
Adult, interm.	Wednesdays, 1/23 – 3/6	6:50 – 7:20 PM	\$69/79
Adult, advanced	Wednesdays, 1/23 – 3/6	7:30 – 8:00 PM	\$69/79
<b>Spring</b>			
Parent Tot	Sundays, 4/7 – 6/2	12:15 – 12:45 PM	\$74/84
Youth, all levels	Sundays, 4/7 – 6/2	1:00 – 1:45 PM	\$84/94

Youth, all levels	Sundays, 4/7 – 4/2	2:00 – 2:45 PM	\$84/94
Youth, levels 1-3	Wednesdays, 4/10 – 5/22	4:15 – 5:00 PM	\$84/94
Youth, levels 4-5	Wednesdays, 4/10 – 5/22	5:15 – 6:00 PM	\$84/94
Adult, beginner	Sundays, 4/7 – 6/2	3:00 – 3:30 PM	\$69/79
Adult, beginner	Wednesdays, 4/10 – 5/22	6:10 – 6:40 PM	\$69/79
Adult, interm.	Sundays, 4/7 – 6/2	3:40 – 4:10 PM	\$69/79
Adult, interm.	Wednesdays, 4/10 – 5/22	6:50 – 7:20 PM	\$69/79
Adult, advanced	Wednesdays, 4/10 – 5/22	7:30 – 8:00 PM	\$69/79



**Group Exercise Classes**  
**(Winter Quarter Schedule (1/7-3/17))**

Membership offers access to a variety of group exercise classes for free. Cardio, cycling, strength, yoga, and Pilates are at the Henry Crown Sports Pavilion, while aqua fitness is at the Norris Aquatics Center. No registration is needed.

Time	Class	Location   Instructor
<b>Monday Classes</b>		
6:15 – 7:15 AM	HIIT	Studio 1AB   Debbie
8:30 – 9:30 AM	Aqua Fitness	Pool   Joy
12:00 – 1:00 PM	Vinyasa Flow	Studio 2   Jenny
12:00 PM – 12:30 PM	HIIT	Studio 1AB   Kile
12:30 PM – 1:00 PM	BodyPump	Studio 1AB   Kile
5:30 – 6:30 PM	Cycle Challenge	Cycle Studio   Ilya
5:30 – 6:30 PM	WERQ	Studio 1 AB   Sharon
7:00 – 8:00 PM	Vinyasa Flow	Studio 2   Alex
<b>Tuesday Classes</b>		
6:15 – 7:00 AM	Cycle Express	Cycle Studio   Caitlin
7:00 – 8:00 AM	Sunrise Yoga	Studio 2   Donna
8:30 – 9:30 AM	Zumba Gold	Studio 1AB   Maria
12:00 PM – 1:00 PM	Pilates Yoga Fusion	Studio 2   Sandy
12:10 PM – 12:50 PM	Cycle Express	Cycle Studio   Vladimir
5:30 – 6:30 PM	Ashtanga Yoga	Studio 2   Cat
5:30 – 6:30 PM	BodyPump	Studio 1AB   Lis
7:00 – 8:00 PM	WERQ	Studio 1AB   Spencer
<b>Wednesday Classes</b>		
6:15 – 7:15 AM	BodyPump	Studio 1AB   Martin
8:30 – 9:30 AM	Aqua Fitness	Pool   Maureen
12:00 PM – 1:00 PM	Vinyasa Flow	Studio 2   Jenny
12:00 PM – 1:00 PM	BodyPump	Studio 1AB   Bev
5:30 – 6:30 PM	WERQ	Studio 1AB   Kristy
5:30 – 6:30 PM	Cycle Challenge	Cycle Studio   Caitlin
7:00 – 8:00 PM	Vinyasa Flow	Studio 2   Chelsea
<b>Thursday Classes</b>		
6:15 – 7:00 AM	Cycle Express	Cycle Studio   Debbie
7:00 – 8:00 AM	Sunrise Yoga	Studio 2   Donna
8:30 – 9:30 AM	Zumba Gold	Studio 1AB   Rhonda
12:00 PM – 1:00 PM	Pilates Barre	Studio 2   Amy
12:10 PM – 12:50 PM	Cycle Express	Cycle Studio   Vladimir
5:30 – 6:30 PM	Ashtanga Yoga	Studio 2   Julie R.
5:30 – 6:30 PM	BodyPump	Studio 1AB   Paul
7:00 – 8:00 PM	Zumba	Studio 1AB   Suzy

<b>Friday Classes</b>		
8:30 AM – 9:30 AM	Aqua Fitness	Pool   Heather
12:00 PM – 12:30 PM	HIIT	Studio 1AB   Vladimir
12:00 PM – 1:00 PM	Power Yoga	Studio 2   John
12:30 PM – 1:00 PM	Core Conditioning	Studio 1AB   Vladimir
5:30 – 6:30 PM	Mindful Yoga	Studio 2   Katherine
<b>Saturday Classes</b>		
8:15 – 9:15 AM	Cycle Challenge	Cycle Studio   Tina-Marie
9:30 – 10:30 AM	BodyPump	Studio 1AB   Paul
9:30 – 10:30 AM	Yoga Basics	Studio 2   Donna
11:00 AM – 12:00 PM	Vinyasa Flow	Studio 2   John
11:00 AM – 12:00 PM	WERQ	Studio 1AB   Spencer
<b>Sunday Classes</b>		
11:00 AM – 12:00 PM	Hatha Yoga	Studio 2   Gosia
12:00 PM – 1:00 PM	BodyPump	Studio 1AB   Phoebe





# One Book, One Northwestern

A full program of events has kicked off for our new One Book One Northwestern selection, *The Handmaid's Tale*. For more information about the One Book One Northwestern program, please contact Nancy Cunniff at [onebook@northwestern.edu](mailto:onebook@northwestern.edu) or 847-467-2294.

## ***The Handmaid's Tale* by Margaret Atwood Selected for One Book Program 2018-2019**

"The Handmaid's Tale," a book set in a dystopian future in which the U.S. government has been overthrown by an authoritarian regime that uses fertile women as handmaids to bear children for the ruling class, is Northwestern University's One Book One Northwestern all-campus read for the 2018-19 academic year. The author of "The Handmaid's Tale," Margaret Atwood, will deliver a keynote address Oct. 30 at Northwestern on both campuses. All first-year students are given a copy of the One Book each year.

One Book One Northwestern is a community-wide reading program hosted by the Office of the President. It aims to engage the campus in a common conversation centered on a carefully chosen, thought-provoking book. It began in 2005 for students in the Weinberg College of Arts and Sciences and has since evolved into a community-wide program involving students, faculty and staff from all majors and departments.

Everyone is encouraged to read the One Book selection. The Office of the President sends a free copy to incoming first-year and transfer students the summer before they arrive on campus.

Throughout the year, events like lectures, films, and discussion groups provide an opportunity for individuals to gather and talk about the issues presented in the book. Many of these events are open to the public and the entire community is invited to participate. Visit the Participate section to learn how you can get involved.



## **Social Regard: Artist Paula Henderson**

*Fri, 1/11 to Wed, 2/13, free*

*Dittmar Gallery, 1999 Campus Dr, Evanston*

*Contact: Nancy Cunniff, 847-467-2294, [onebook@northwestern.edu](mailto:onebook@northwestern.edu)*

In Paula Henderson's Social Regard, one branch of these works is concerned with gender specific social constructs shaped by the ubiquitous commercial and cultural representations of women internalized in the development of our sense of worth.

## **Keyword: Reproduction**

*Tues, 2/5, 5:00-6:30 PM, free*

*Kresge Hall, Trienens Forum (Room 1-515), 1880 Campus Drive, Evanston*

*Contact: Eliot Colin, 847-491-5871, [gender@northwestern.edu](mailto:gender@northwestern.edu)*

A panel of five feminist doctors, scholars, educators and activists discuss the politics of human biological reproduction as well as the reproduction of social inequity and gendered systems of power.

## **The Handmaid's Tale Fan Fiction Reading**

*Sun, 2/2, 6:00-7:00 PM*

*Women & Children First Bookstore (5233 N. Clark St, Chicago)*

The Handmaid's Tale Fan Fiction Reading – readings by NU students, alums, and faculty inspired by the novel.

## **History, Context and Relevance of Reproductive Dystopias**

*Tues, 2/12, 5:30-7:00 PM, free*

*Dittmar Gallery, 1999 Campus Dr, Evanston*

*Contact: Nancy Cunniff, 847-467-2294, [onebook@northwestern.edu](mailto:onebook@northwestern.edu)*

The Graduate School Dean, Teresa K Woodruff, will discuss the role that dystopias play in creating ideas of reproductive interventions and how that plays out in a policy perspective. [RSVP](#) is required.

## **Film Screening: The Stepford Wives**

*Thurs, 2/14, 7:00-9:00 PM, free*

*Block Museum of Art, Mary and Leigh, 40 Arts Circle Drive, Evanston*

*Contact: Block Museum of Art, 847-491-4000,*

*[block-museum@northwestern.edu](mailto:block-museum@northwestern.edu)*

# Speakers and Presentations

## Infant Air Quality: Crawling-Induced Resuspension of Biological Particulate Matter

**Brandon Boor (Purdue University)**

*Fri, 2/1, 2:00-3:00 PM, free*

*Technological Institute, Room A230, 2145 Sheridan Road, Evanston*

*Contact: Tierney Acott, 847-491-3257, tierney-acott@northwestern.edu*

Infants and toddlers spend over 90% of their time indoors. House dust is heavily enriched with an incredible diversity of microbes and allergens. Early-life inhalation exposures to the microbial and allergenic content of indoor dust can play a significant role in both the development of, and protection against, asthma and allergic diseases. This seminar will explain how crawling infants can stir-up (resuspend) concentrated clouds of particulate matter from floor dust. The implications for early-life microbial exposures will be discussed.

## Social Media and Humanitarian Health: Transforming Big Data into Operational Action

**Jennifer Lisa Chen (Northwestern Memorial Hospital)**

*Fri, 2/1, 12:00-1:00 PM, free*

*Rebecca Crown Center, 633 Clark Street, Evanston*

*Contact: Dylan Peterson, 847-467-2770, buffettinstitute@northwestern.edu*

Big Data can open up opportunities for more effective health response during disasters by potentially improving the way that health responders meet the needs of people affected by a crisis. This talk will discuss current assumptions and myths about social media data, and research approaches to bridge the gaps between aspirations, theory, and practice.

## Political Theory Workshop: Up the Street

**Adom Getachew (University of Chicago)**

*Fri, 2/1, 3:00-5:00 PM, free*

*Scott Hall, Room 212, 601 University Place, Evanston*

*Contact: Graduate student Political Theory Workshop*

*politicaltheory.nu@gmail.com*

The Graduate Students Political Theory Workshop invites students and faculty to a discussion with Adom Getachew, Assistant Professor of Political Science at University of Chicago. Professor Getachew will present a chapter from her new book, titled "Worldmaking after Empire: The Rise and Fall of Self-Determination."

## Astronomy Colloquium: Particle Physics Beyond Colliders

**Asimina Arvanitaki (Perimeter Institute)**

*Fri, 2/1, 4:00-5:00 PM, free*

*Technological Institute, Room L211, 2145 Sheridan Road, Evanston*

*Contact: Yassaman, 847-491-7650, yassaman.shemirani@northwestern.edu*

Recently there have been several proposals of low-energy precision experiments that can search for new particles, new forces, and the Dark Matter of the Universe in a way that is complementary to collider searches. In this talk, I will present some examples involving atomic clocks, resonant molecular excitations, and astrophysical black holes accessible to LIGO.

## IPR Colloquium: Global Family Change: Persistent Diversity with Development

**Julia Behrman (Northwestern University)**

*Mon, 2/4, 12:00-1:00 PM, free*

*Chambers Hall, Ruan Conference Room (lower level),*

*600 Foster St, Evanston*

*Contact: Ellen Dunleavy, 847-491-3395,*

*ipr@northwestern.edu*

Sociologist Julia Behrman's research explores the relationship between inequality in educational opportunity and demographic processes, with emphasis on fertility and family formation. Much of her work is motivated by a central question: How does family background shape educational opportunities, and in turn, how does education shape fertility, family formation, and the intergenerational transmission of inequality? Her work takes an international comparative perspective that focuses on contexts in sub-Saharan Africa and South Asia undergoing rapid economic, social, and demographic change. More recent work has explored the interplay between international migration and family change among migrants from high-fertility African and Asian countries to lower-fertility European countries.



## Japanese American Internment Narratives After 9/11

**Michelle Huang (Northwestern University)**

*Tues, 2/5, 12:30-2:00 PM, free*

*Crowe Hall, Room 1132, 1860 Campus Drive, Evanston*

*Contact: Cheryl Jue, 847-467-7114,*

*asianamerican@northwestern.edu*

Professor Michelle Huang will examine two novels about Japanese American internment written after 9/11 to consider what these "neo-internment narratives" can tell us about enduring logics of xenophobia and white nationalism.

### **Keyword: Reproduction**

Tues, 2/5, 5:00-6:30 PM, free  
Kresge Hall, Trienens Forum  
(Room 1-515), 1880 Campus  
Drive, Evanston

Contact: Eliot Colin,  
847-491-5871,

gender@northwestern.edu

A panel of five feminist doctors,  
scholars, educators and activists  
discuss the politics of human  
biological reproduction as well as  
the reproduction of social  
inequity and gendered systems of power.



- Angela Lawson(Northwestern Medicine's Fertility Clinic)
- Sekile Nzinga-Johnson, Ph.D. (Director of the Women's Center, GSS)
- Sloane Scott (Planned Parenthood Generation Action)
- Katie Watson (Northwestern Medicine, Medical Social Sciences, Medical Education, and Ob/Gyn)
- Sera Young (Anthropology & Global Health, Institute for Policy Research)

### **Wed@NICO Seminar**

**Leslie DeChurch (Northwestern University)**

Wed, 2/6, 12:00-1:00 PM, free

Chambers Hall, Lower Level, 600 Foster St, Evanston

Contact: Meghan Stag, 847.491.2527,

nico@northwestern.edu

Professor DeChurch leads the ATLAS lab: Advancing Teams, Leaders, and Systems. ATLAS explores the dynamics through which teams form, and how these dynamics affect their performance as teams, and their ability to work as larger organizational systems (multiteam systems). ATLAS conducts laboratory and online experiments, meta-analytic integrations, and field studies of teams and leaders to understand their core organizing processes. Such processes include: leadership networks, team cognition, team conflict and motivation, and team information sharing.



### **Sheil Seminar: Keeping the Faith in a Capitalist Environment**

Wed, 1/30, 2/6, 2/13; Tues, 2/19, 7:00-8:30 PM

Please Register [Here](#). Free for students, \$5 NU Affiliates, \$25 Guests

Sheil Catholic Center, 2110 Sheridan Road, Evanston

Contact: Mary Deeley, 847-328-4648, m-deeley@northwestern.edu

This seminar examines the tensions created by the impersonal dynamics of market based economic systems, focusing especially on capitalism, and the role that moral principles and religious commitments, especially those of Trinitarian Christianity, can play in making economics serve the highest aspirations of human beings. The discussions will consider the many faces of capitalism, the challenge of market-based socialism, and recent developments in the way we understand the spirit of Christianity. (Open to Everyone)

### **NU Transportation Center: Control of Traffic Composed of Humans and Automated Vehicles**

**Dan Work (Vanderbilt University)**

Thurs, 2/7, 3:30-5:00 PM, free

Chambers Hall, Lower Level, 600 Foster St, Evanston

Contact: Joan Pinnell, 847-491-7287, tcinfo@northwestern.edu

The majority of the best selling cars in the US are now available with SAE level-one automated driving features such as adaptive cruise control. As the penetration rate of these vehicles grows on the roadways, it is now possible to consider controlling the bulk human-piloted traffic flow by carefully designing these driver assist features. This talk will introduce modeling, simulation, and field experiments that illustrate the potential of automated vehicle systems at low market penetration rates to eliminate human-generated phantom traffic jams. It will also highlight new findings about the traffic impacts of current, commercially available level-one automated vehicle systems already on the road.

### **American Identity Politics and International Law**

**Jide Nzelibe (Northwestern University)**

Fri, 2/8, 12:00-1:00 PM, free

Rebecca Crown Center, 633 Clark Street, Evanston

Contact: Dylan Peterson, 847-467-2770, buffetinstitute@northwestern.edu

It has long been conventional in our public morality to condemn the role of special interest groups in shaping international economic law and policy. Commentators are quick to point to a solution: engage the larger voting public regarding the moral merits of international economic agreements. This talk argues the opposite: if the American experience with international trade controversies is any guide, moral inflation and appeals to mass politics are more likely to increase the stakes of politics in international economic law and render beneficial and durable bargains more difficult. Thus, rather than encourage cooperation or productive deliberation, escalating moral rhetoric is more likely to transform international economic law into another arena in which polarizing and zero-sum conflicts over status, social identity, and moral prestige can be projected.



### Legal Studies Lecture

David Hausman (ACLU Immigration Rights Project)

*Fri, 2/8, 2:00-3:00 PM, free*

*Kresge Hall, Room 1515, 1880 Campus Drive, Evanston*

*Contact: Joanna Grisinger, 847-467-2207, joanna.grisinger@northwestern.edu*

David Hausman is a Skadden Fellow at the ACLU Immigrants' Rights Project. The Project is dedicated to expanding and enforcing the civil liberties and civil rights of immigrants and to combating public and private discrimination against them.

### Comparative-Historical Social Science Workshop

**Matt Lange (McGill University)**

*Fri, 2/8, 3:00-4:30 PM, free*

*1902 Sheridan Road, Evanston*

*Contact: Daniel Encinas Zevallos, DanielEncinas2021@u.northwestern.edu*

Lange's work focuses on state building, nationalism, ethnic violence, development, colonial legacies, and comparative-historical methods. In addition to his articles and chapters, he has authored *Lineages of Despotism and Development: British Colonialism and State Power* (Chicago, 2009), *Educations in Ethnic Violence: Identity, Educational Bubbles, and Resource Mobilization* (Cambridge, 2012), and *Comparative-Historical Methods* (Sage, 2013) and is a co-editor of *States and Development: Historical Antecedents of Stagnation and Advance* (Palgrave Macmillan, 2005) and *The Oxford Handbook of the Transformations of the State* (Oxford, 2015).

### Impact and Intrusion: Patterns, Structure, and the Texture of Our World **Sidney Nagel (University of Chicago)**

*Fri, 2/8, 4:00-5:00 PM, free*

*Technological Institute, Room L211, 2145 Sheridan Road, Evanston*

*Contact: Yassaman Shemiran, 847-491-7650,*

*yassaman.shemirani@northwestern.edu*

Examine closely the world around you and many things that you take for granted are astonishing. Take, for example, a simple drop of liquid changing its topology as it breaks into pieces. This is an example of a singularity where physical quantities, such as the pressure, diverge at the instant of breakup. Another example is when this drop, having become untethered, falls onto a surface: if the surface is cool and dry, the drop likely will splash; if the surface is hot, however, the drop simply hovers and never touches down. Consider again: when a liquid is compressed between two smooth surfaces, it forms an expected circular disk; but when the plates are separated, quite a different pattern emerges. This is a form of dilation symmetry caused by the penetration of space. It is all around and within us. In this talk, I will emphasize the surprises and elegance of how nature arranges the texture of our lives.

### The Political Development of Asset Inequality in the U.S.

**Chloe Thurston (Northwestern University)**

*Mon, 2/11, 12:00-1:00 PM, free*

*Chambers Hall, Ruan Conference Room (lower level),*

*600 Foster St, Evanston*

*Contact: Ellen Dunleavy, 847-491-3395,*

*ipr@northwestern.edu*

Chloe Thurston's research is at the intersection of American political development and political economy and has focused on the development of social and economic policies, interest groups and social movements, institutional change, and historical analysis.



### Institute on Complex Systems Seminar

**Chris Wolverton (Northwestern University)**

*Wed, 2/13, 12:00-1:00 PM, free*

*Chambers Hall, Lower Level, 600 Foster St, Evanston*

*Contact: Meghan Stagl, 847-491-2527,*

*nico@northwestern.edu*

Chris Wolverton's research group is centered on computational materials science, and specifically first-principles quantum mechanical simulation tools. These computational tools have advanced to the point now where materials may be "synthesized virtually", with their properties predicted on a computer before ever being synthesized in a laboratory. These tools also open the field of "materials informatics" where we can use machine learning tools to explore materials datasets and discover new materials. In this work, his group is working towards a goal of being able to suggest new materials in the same way that Netflix and Amazon can recommend movies or books.



### Artist Talk: Counter-Histories with Michael Rakowitz

*Fri, 2/13, 6:00-7:00 PM, free*

*Block Museum of Art, Mary and Leigh, 40 Arts Circle Drive, Evanston*

*Contact: Block Museum of Art, 847-491-4000, block-museum@northwestern.edu*

Michael Rakowitz explores culture as it is embodied in artifacts. In projects ranging from a recreation of the Ishtar Gate of ancient Babylon to selling dates in an NYC storefront, he has used both food and material fragments to recreate and reimagine cultural and personal histories, particularly related to his Iraqi-Jewish cultural heritage. Drawing upon his own artistic practice and the exhibition *Caravans of Gold*, Rakowitz will consider cultural loss and removal as well as counter-histories and narratives in artistic practice. He will be joined in conversation by Kiersten Neumann, Curator at the Oriental Institute and Ann Gunter, Bertha and Max Dressler Professor in the Humanities, whose work addresses the visual and material culture of the ancient Near East and its Eastern Mediterranean neighbors.

### Speculative Fields: Property in the Shadow of Post-Conflict Columbia

**Meghan L. Morris (American Bar Foundation)**

*Thurs, 2/14, 12:30-2:00 PM, free*

*Parkes Hall, Room 222, 1870 Sheridan Road, Evanston*

*Contact: Murielle Harris, 847-491-3244, murielle-harris@northwestern.edu*

As Colombia attempts to bring its decades-long conflict to a close, the state is engaged in a broad endeavor to bring about a new era: the “post-conflict.” Land restitution, which aims to return and title land to those who lost it in the conflict, has been billed as part of the path to peace. In the anticipatory shadow of the post-conflict, however, restitution has given rise to speculation on uncertain market and legal regimes, as well as regimes of violence, which I explore drawing on ethnographic fieldwork in the region of Urabá. New forms of speculative possession of land, as well as recalibrated historical forms, take shape in this shadow as peace is continually deferred into the future.

### Research and Advocacy at the Intersection of Health and Human Rights

**Brian Citro (Bluhm Legal Clinic, Human Rights Consortium)**

*Fri, 2/15, 12:00-1:00 PM, free*

*Rebecca Crown Center, 633 Clark Street, Evanston,*

*Contact: Dylan Peterson, 847-467-2770, buffettinstitute@northwestern.edu*

While the right to health remains, at most, an emergent talking point for the political left in the United States, human rights play critical roles in shaping individual and system level health in countries around the world. This talk will highlight a few key issues and examples of global concern at the intersection of health and human rights.

### German Modern Dance Between Orientalism and Transnationalism

**Susan Manning (Northwestern University)**

*Fri, 2/15, 12:30-2:00 PM, free*

*University Hall, Hagstrum Room (Room 201), 1897 Sheridan Road, Evanston*

*Contact: Sarah Peters, 847-491-3864, sarah.mcginley@northwestern.edu*

Part of winter talk series, “Thresholds of the European Avant-Garde,” sponsored by the Global Avant-Garde and Modernist Studies (GAMS) cluster and by the Program in Comparative Literature. Susan Manning has pursued her research interest in dance studies, an emergent discipline within the humanities, by working through the more established fields of drama, theatre, and performance studies.

### Sloppy Models, Differential Geometry, and the Space of Model Predictions

**Jim Sethna (Cornell University)**

*Fri, 2/15, 4:00-5:00 PM, free*

*Technological Institute, Room L211, 2145 Sheridan Road, Evanston*

*Contact: Yassaman Shemirani, 847-491-7650, yassaman.shemirani@northwestern.edu*

Models of systems biology, climate change, ecology, complex instruments, and macroeconomics have parameters that are hard or impossible to measure directly. If we fit these unknown parameters, fiddling with them until they agree with past experiments, how much can we trust their predictions? We have found that predictions can be made despite huge uncertainties in the parameters – many parameter combinations are mostly unimportant to the collective behavior. We will use ideas and methods from differential geometry and approximation theory to explain sloppiness as a ‘hyper-ribbon’ structure of the manifold of possible model predictions. We show that physics theories are also sloppy – that sloppiness may be the underlying reason why the world is comprehensible. We will present new methods for visualizing this model manifold for probabilistic systems – such as the space of possible universes as measured by the cosmic microwave background radiation.



### Implementation Science on Scale-Out of Effective eHealth Programs

**Brian Mustanski (Northwestern University)**

*Mon, 2/18, 12:00-1:00 PM, free*

*Chambers Hall, Ruan Conference Room (lower level), 600 Foster St, Evanston*

*Contact: Ellen Dunleavy, 847-491-3395, ipr@northwestern.edu*

"So It's Effective. Now What? Implementation Science on Scale-Out of Effective eHealth Programs" by Brian Mustanski, Professor of Medical Social Sciences, Psychiatry & Behavioral Sciences, and IPR Associate; Director of the Institute on Sexual and Gender Minority Wellbeing and Health (ISGMH).



**It gets you off your high horse, really: Queer Truckers and Rolling Sexualities**

**Anne Balay (University of Chicago)**

Mon, 2/18, 4:30-6:30 PM, free  
Kresge Hall, Trienens Forum (Room 1-515), 1880 Campus Drive, Evanston

Contact: Suzette Denose, s-denose@northwestern.edu

The trucking industry has changed significantly since 1970, and this talk puts that history into the context of social and cultural shifts in order to argue that truck stops and the people who frequent them have been a consistent home for queer sexual and gender radicalism. Drawing from her oral histories and participant observation, Balay explores intersections of public sex, queer pleasures, and working-class embodiments.



**X-Ray Reverberation in Accreting Black Holes**

**Erin Kara (University of Maryland)**

Tues, 2/19, 4:00-5:00 PM, free  
Technological Institute, Room F160, 2145 Sheridan Road, Evanston

Contact: Pamela Villalovoz, 847-491-3644, pmv@northwestern.edu

Accreting supermassive black holes can produce more electromagnetic and kinetic luminosities than the combined stellar luminosity of an entire galaxy. Most of the power output from an Active Galactic Nucleus is released close to the black hole, and therefore studying the inner accretion flow is essential for understanding how black holes grow and how they affect their surrounding environments. In this talk, Kara will present a new way of probing these environments, through X-ray reverberation mapping, which allows us to map the gas falling on to black holes on microparsec scales and measure the effects of strongly curved spacetime close to the event horizon.



**I was One of the Chosen Ones: Slavery and the Valuation of Souls**

**Daina Ramey Berry (University of Texas at Austin)**

Wed, 2/20, 12:15-2:00 PM, free  
Harris Hall, Leopold Room 108, 1881 Sheridan Road, Evanston

Contact: Elzbieta Foeller-Pituch, 847-467-0885, efp@northwestern.edu

Dr. Berry is a specialist on the history of gender and slavery in the United States and Black women's history. She is the award-winning author and editor of five books and several scholarly articles. Her recent book, *The Price for their Pound of Flesh: The Value of the Enslaved, from Womb to the Grave, in the Building of a Nation* (Beacon, 2017) has been awarded three book awards.



**LGBT Rights: Threats and Opportunities**

**Jocelyn Samuels (University of California, Los Angeles)**

Wed, 2/20, 3:30-5:00 PM, free  
Scott Hall, Guild Lounge, 601 University Place, Evanston  
Contact: Patricia Reese, 847-491-8712, p-reese@northwestern.edu

Samuels was the Director of the Office for Civil Rights at the U.S. Department of Health & Human Services from 2014-17 and also served as Acting Assistant Attorney General for Civil Rights at the U.S. Department of Justice from 2013-14.

**Aztecs in the Empire City: Collecting and Exhibiting Ancient American Art, 1877-1914**

**Joanne Pillsbury (The Metropolitan Museum of Art)**

Wed, 2/20, 5:00-7:00 PM, free  
Block Museum of Art, Mary and Leigh, 40 Arts Circle Drive, Evanston  
Contact: Block Museum of Art, 847-491-4000, block-museum@northwestern.edu

With the return of peace after the dislocations of the US Civil War, The Metropolitan Museum of Art was founded in 1870 by businessmen, civic leaders, and artists in New York. Unlike its European counterparts, the institution had no royal collections on which to build. Its ancient American holdings grew through gifts and purchases from diplomats, philanthropists, and collectors. By 1900, with the acquisition of the Petich Collection of some 1500 "Aztec," and "Toltec" works, The American Archaeologist hailed the Met's holdings as second only to Mexico City. Yet by 1914, the Museum had turned away from American antiquities, redefining not only itself but also what was considered the appropriate aesthetic purview of an art museum for decades.





### 2000 Years of Public Health: From Ancient Plagues to Modern Pandemics

**Kyle Harper (University of Oklahoma)**

*Thurs, 2/21, 5:00-6:30 PM, free*

*Kresge Hall, Room 1515, Trienens Forum, 1880 Campus Drive, Evanston*

*Contact: Alison Witt-Janssen, 847-491-7597, awj@northwestern.edu*

Professor Harper will present his talk "2000 Years of Public Health: From Ancient Plagues to Modern Pandemics" as part of the Classics Seminar Series #ClassicsNow: The Urgency of Re-Imagining Antiquity.

### Achieving Equity in Health Globally: Time for a Quality Revolution

**Lisa Hirschhorn (Northwestern Feinberg School of Medicine)**

*Fri, 2/22, 12:00-1:00 PM, free*

*Rebecca Crown Center, 633 Clark Street, Evanston*

*Contact: Dylan Peterson, 847-467-2770, buffettinstitute@northwestern.edu*

Before coming to Northwestern in October 2017, Dr. Hirschhorn held a number of positions over the last three decades, including director of HIV services at Dimock Community Health Center; senior clinical advisor for HIV at JSI Research and Training; director of monitoring, evaluation and quality for Partners In Health in Boston; and most recently the director of implementation and improvement science at Ariadne Labs, a health systems innovation partnership between Harvard School of Public Health and Brigham and Women's Hospital.

### What does a Parmenidean Knower Know?

**Patricia Curd (Purdue University)**

*Fri, 2/22, 2:00-4:00 PM, free*

*Kresge Hall, Room 3438, 1880 Campus Drive, Evanston*

*Contact: Andrew Hull, AndrewHull2019@u.northwestern.edu*

Recent years have seen a surge of interest in the Doxa section of Parmenides' poem, driven, to some extent, by the attention that has been paid to the astronomical fragments, and perhaps more by the enormous range of subjects having to do with the sensible world treated in the Doxa. Why, if as much earlier 20th century scholarship held, Parmenides thinks that the content of mortal belief is untrustworthy, because not appropriately grounded in what-is, did he allot so much space to it?

### Black Holes, Dark Mater, and Not-So-Dark Matter

**Marc Kamionkowski (Johns Hopkins University)**

*Fri, 2/22, 4:00-5:00 PM, free*

*Technological Institute, Room L211, 2145 Sheridan Road, Evanston*

*Contact: Yassaman Shemirani,*

*847-491-7650, yassaman.shemirani@northwestern.edu*

Following LIGO's discovery of gravitational waves from the merger of a binary black hole, several colleagues and I speculated that these black holes could make up the dark matter long known to exist in galactic halos. I will explain why the idea, although nutty, was not completely crazy, and discuss several challenges the scenario has seen the past few years. I will also explain several interesting ideas and results in an array of areas of astrophysics that have followed from that initial work.

### Rethinking the Sufi/Reformist Divide:

#### Gender, Dress and Authority

*Mon, 2/25, 9:30 AM-3:00 PM, free*

*620 Library Place, Evanston*

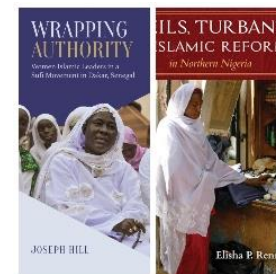
*Contact: Rebecca Shereikis, 847-491-2598,*

*r-shereikis@northwestern.edu*

Join the Institute for the Study of Islamic Thought in Africa (ISITA) for a dialogue between the authors of two new books that discuss the role of gender, dress, and authority in reformist and Sufi Islamic movements in West Africa. Both authors will be present.

Discussants:

- Katherine Hoffman (Anthropology, Northwestern University)
- Henri Lauzière, (History, Northwestern University)
- Wendell Hassan Marsh (Buffett post-doctoral fellow, Northwestern University)
- Joseph Hill (Anthropology, University of Alberta)
- Elisha Renne (Anthropology and Afroamerican and African Studies, University of Michigan)



### Shifting Resettlement Strategies Through the Refugee Knowledge Hub

**Gayla Ben-Arieh (Northwestern University)**

*Mon, 2/25, 12:00-1:00 PM, free*

*Chambers Hall, Ruan Conference Room (lower level), 600 Foster St, Evanston*

*Contact: Ellen Dunleavy, 847-491-3395, [ipr@northwestern.edu](mailto:ipr@northwestern.edu)*

Ben-Arieh's research centers on the rights and processes of refugee protection and the role of law in settlement and inclusion in host societies and comparative constitutional theory and transformation. In 2015 she received funding to launch a research program on refugee resettlement. She is now continuing this work through the development of a Refugee Knowledge Hub, a community-based partnership providing leadership, knowledge and support for refugees and asylees in our community.

### Borobudur in Ruins: Art and Empire in the Early 19<sup>th</sup> Century

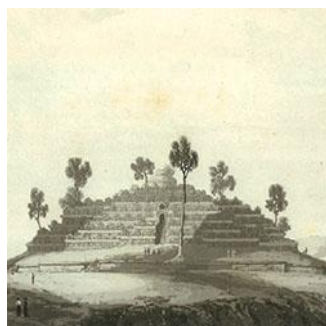
**Sarah Tiffins (Asian Art at the Queensland Art Gallery)**

*Tues, 2/26, 5:15-6:15 PM, free*

*Kresge Hall, Room 1515, 1880 Campus Drive, Evanston*

*Contact: Mary Clare Meyer, 847-491-3230, [maryclare.meyer@northwestern.edu](mailto:maryclare.meyer@northwestern.edu)*

Dr. Sarah Tiffin is the author of *Southeast Asia in Ruins: Art and Empire in the Early 19th Century* and the former curator of Asian Art at the Queensland Art Gallery in Australia.



### Reproductive Justice Projects: A Panel Discussion

*Wed, 2/27, 5:00-6:30 PM, free*

*Kresge Hall, Trienen Hall, Room 1-515, 1880 Campus Drive, Evanston*

*Contact: Eliot Colin, 847-491-5871, [gender@northwestern.edu](mailto:gender@northwestern.edu)*

A panel discussion featuring five activists and alumni working on issues of reproductive justice in Chicago who will share their experiences working across a range of organizations and projects--including the Chicago Abortion Fund (CAF), Community Bond Fund,

Howard Brown Health Center, Chicago Women's Health Center (CWHC), Illinois Caucus for Adolescent Health (ICAH) and Northwestern's Center for Awareness, Response, and Education (CARE) and Sexual Health and Assault Peer Educators (SHAPE)--that represent the capaciousness of reproductive politics as it is constituted by a resurgent reproductive justice movement.



### Nations of Migrants: Panel and Conversation

*Thurs, 2/28, 6:00-7:30 PM, free*

*Block Museum of Art, Mary and Leigh, 40 Arts Circle Drive, Evanston*

*Contact: Lindsay Bosch, 847-467-4602, [lindsay.bosch@northwestern.edu](mailto:lindsay.bosch@northwestern.edu)*

As explored in the Block Museum exhibitions *Caravans of Gold* and *The Leopard* (Western Union Small Boats), nations around the world have long been shaped by migration. This program will examine urgent issues of migration in our current moment and their connections to our place in the US, Chicago, and Evanston. Drawing on the perspectives and first-hand experiences of economic migrants, international policy experts, and humanitarian organizations, we will consider issues such as the ethics of witnessing, self-reliance and resilience, and responsibility in a time of refugee crisis. Through this discussion, we interrogate the legal, social, political, and human implications of our histories as nations of migrants.

### Creative Writing Lecture: The History of Essay

**Sara Levine (School of the Art Institute of Chicago)**

*Thurs, 2/28, 5:00-6:30 PM, free*

*University Hall, Room 201, 1897 Sheridan Road, Evanston*

*Contact: English Department, 847-491-7294, [english-dept@northwestern.edu](mailto:english-dept@northwestern.edu)*

Sara Levine grew up in Ohio. Levine received a BA in English from Northwestern University and a PhD in English and American Literature from Brown University. Levine has taught in the MFA in Nonfiction Writing program at the University of Iowa and is now a professor in the Writing Program at The School of the Art Institute of Chicago, where Levine teaches classes on Narrative Design, the Essay, and Prose Style.

# Parking

## Evanston

### **Evanston Campus Parking Services**

1841 Sheridan Rd., Evanston  
847-491-3319  
parking@northwestern.edu  
www.northwestern.edu/up/parking  
Open Monday-Friday, 8:00 AM – 4:00 PM

Permits are required to park in all lots on the Evanston campus every Monday through Friday from 8:00 AM to 4:00 PM. No permits are required to park on the Evanston campus after 4:00 PM or on weekends, though reserved spaces require permits at all times.

The cost of a guest permit is \$8.25 for a non-refundable, all-day pass. Visitors and guests may purchase a visitor permit at the Parking Services Office (see above for address) or at pay stations located in the North and South Parking Garages.

While there are many scattered parking lots on campus, the largest for guests include:

#### To the North

- North Campus Parking Garage (has a parking pay station): 2311 N. Campus Drive
- LARC Drive: North Campus Drive
- Noyes/Haven/Sheridan Lot: Haven Street & Sheridan Rd.

#### To the South

- South Campus Parking Garage (has a parking pay station and it is next to the parking office): 1847 Campus Drive
- South Beach Structure: 1 Arts Circle Drive
- Locy and Fisk Lot: 1850 Campus Drive
- 619 Emerson Lot
- 515 Clark Street
- 1801/1813 Hinman

#### To the West

- 1940 Sheridan Road (Engelhart)
- 2020 Ridge North Lot (University Police)
- 1948 Ridge Lot (University Police)
- ITEC Lot: University Place & Oak Avenue

## Chicago

### **Chicago Campus Transportation and Parking**

710 N. Lakeshore Dr., Abbott Hall Room 100, Chicago  
312-503-1103  
chicagoparking@northwestern.edu  
www.northwestern.edu/transportation-parking  
Open Monday-Friday, 8:00 AM – 5:00 PM

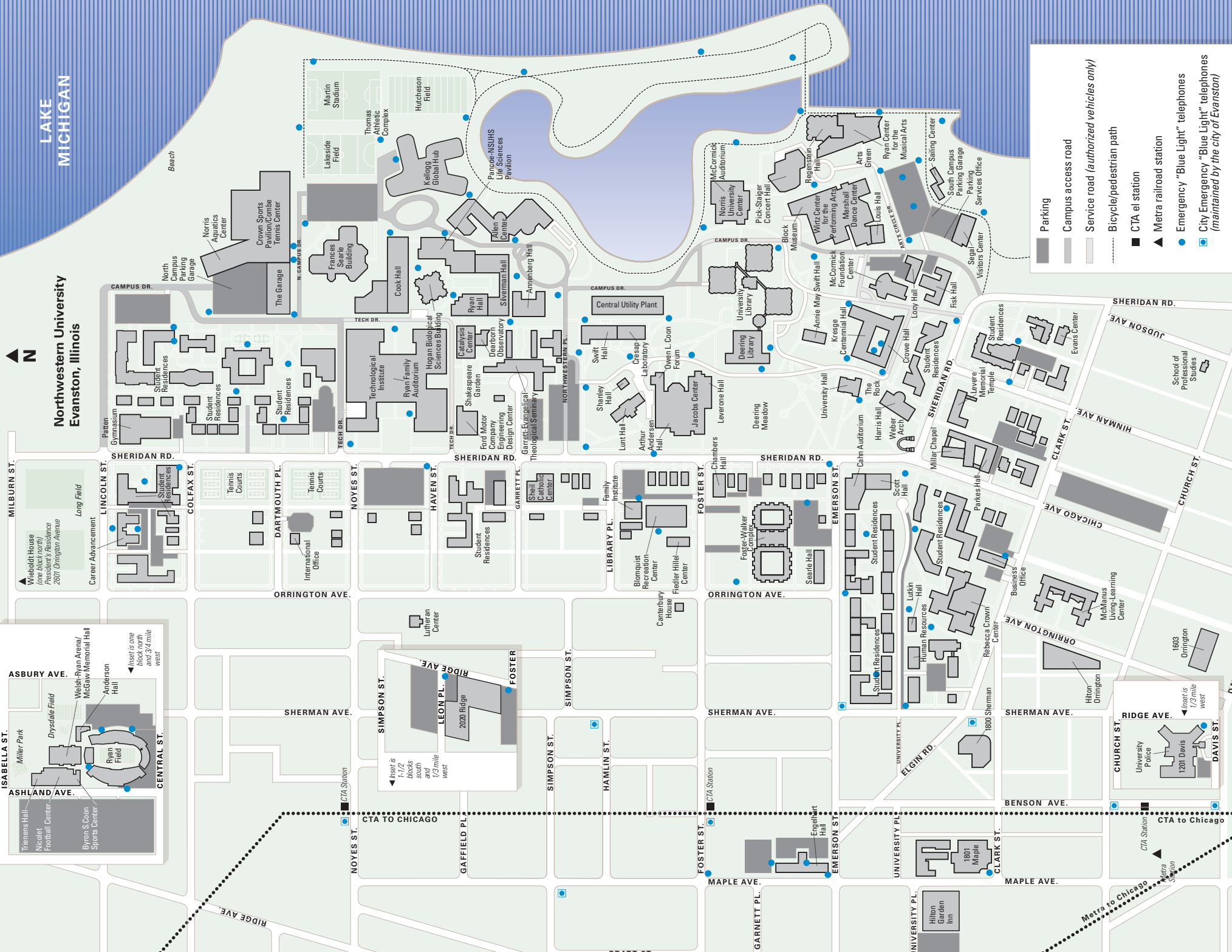
There is no free parking available on the Chicago campus but there are several options available for guests.

Public garages or Northwestern garages open to the public include:

- 275 E. Chestnut Street
- 222 E. Huron Street
- 710 N. Lake Shore Drive
- 680 N. Lake Shore Drive
- 259 E. Erie Street
- 321 E. Erie Street
- 441 E. Ontario Street

If you are going to the Chicago campus as the guest of a department, volunteer, participant in a study, or as a hospital patient, you can also contact the organizer of your event to inquire about potential discounted parking validations or passes.

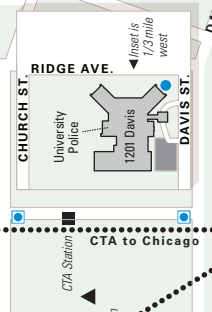
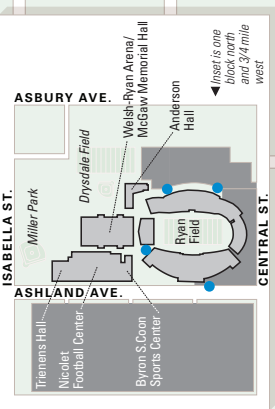




LAKE MICHIGAN

# Northwestern University Evanston, Illinois

- Parking
- Campus access road
- Service road (authorized vehicles only)
- Bicycle/pedestrian path
- CTA el station
- Metra railroad station
- Emergency "Blue Light" telephones
- City Emergency "Blue Light" telephones (maintained by the city of Evanston)



# Northwestern University

## **Neighborhood and Community Relations**

1603 Orrington Avenue, Suite 1730

Evanston, IL 60201

[www.northwestern.edu/communityrelations](http://www.northwestern.edu/communityrelations)

## **Dave Davis**

Executive Director

[dave.davis@northwestern.edu](mailto:dave.davis@northwestern.edu)

847-467-5762

**To receive this publication electronically every month, please email Shayla Butler at [shayla.butler@northwestern.edu](mailto:shayla.butler@northwestern.edu)**

*Back cover image:* A window into a university for all seasons. Spring and architecture, summer and the Weber Arch, fall outside the Main Library, and Deering Library under a blanket of snow.





Northwestern University

41

NEIGHBORHOOD AND COMMUNITY RELATIONS