



SPEECH

(((C))) School of Communication at Northwestern

a summer program developed especially for high school students

www.northwestern.edu/nhsi

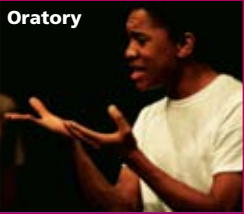
10-Day Program

June 28 – July 8

Extra 4-Day Intensive

July 8 – July 12

Oratory



Debate



Interpretation



Extemporaneous



OUR GOAL: *"To bring together gifted young people and superior teachers...in an atmosphere of affection, knowledge, and trust."*

Ralph Dennis, 1931
founder of the INSTITUTE

NORTHWESTERN UNIVERSITY
National High School Institute

Speech Institute (Individual Events)

The Northwestern University Speech Institute will offer an intensive study of both theory and practice in the competitive arena of high school speech. We will be offering four (4) departments of individual event competition:

- **Oratory**
- **Interpretation**
- **Extemporaneous**
- **Debate**

In each department, the Institute will offer specialized instruction from some of the country's finest and most accomplished speakers. Realizing that competition rules vary from state-to-state for individual events, our Institute is equipped to adhere to your specific event and the rules governing that event in your state. We intend to provide a summer experience which prepares students for success in their upcoming season of competition.

The Institute will accept up to a total of 80 students who demonstrate the academic and extra-curricular achievements that reflect a dedication to both intellectual and personal development. We are prepared to enhance your research and communication skills. You will find the environment of the Institute nurturing and productive. Our goal is to make certain that you leave the Institute more prepared for competition in the 2009-10 season than your competitors across the country.

New this year we are offering an additional 4-day intensive for those that would like to continue beyond the regular 10-day program. This 4-day intensive will provide nearly 1 to 1 student/faculty interaction and will allow students to absolutely perfect their competition work.

• **Oratory**

We will concentrate on philosophical argumentation and research advocacy in creating speeches that articulate a specific thesis with both anecdotal and factual information. Orators will conclude the program by participating in a mock tournament and public performance.

Events that will be taught are:

- **Original Oratory**
- **Oratorical Declamation**
- **Original Comedy**
- **Special Occasion Speaking**

• **Interpretation**

We will help you improve your performance techniques, based on the rules of your particular state and assist you in finding quality performance literature. The Institute will begin by helping competitors find quality performance literature and conclude with a mock tournament and performance.

Events that will be taught are:

- **Dramatic Interpretation - Solo**
- **Dramatic Interpretation - Duo**
- **Humorous Interpretation - Solo**
- **Humorous Interpretation - Duo**
- **Oral Interpretation (both prose and verse)**
- **Solo Dramatic Performance - Dramatic**
- **Solo Dramatic Performance - Humorous**
- **Duet Dramatic Performance - Dramatic**
- **Duet Dramatic Performance - Humorous**

• **Extemporaneous**

Extemp will offer lectures that cover both foreign and domestic issues, providing students with background knowledge in every possible area. Daily coaching, practice speeches and cross-examination will encourage you to use the information you've learned to craft analytical and successful speeches. A mock tournament will be offered at the conclusion of the Institute.

Events that will be taught are:

- **International Extemp**
- **US Extemp**
- **Extemporaneous Commentary**
- **Impromptu Speaking**

• **Debate**

Students can expect instruction in various modes of political and philosophical thought from ancient political theory to postmodernism. While focusing on the major strands of political theory, students will be able to attend various sessions on particular philosophers and theorists. In addition to a comprehensive lecture series, speaking drills, argumentation drills and practice debates will give each debater the ability to hone his/her skills. Students can expect to leave with extensive knowledge about each of the NFL topic areas proposed for the upcoming year. A mock tournament will be offered at the conclusion of the Institute.

Events that will be taught are:

- **Student Congress**
- **Lincoln/Douglas**
- **Public Forum**

Visit Our Website

For more detailed information

www.northwestern.edu/nhsi

We take speech competition seriously—we're looking for those who share that sentiment.

Application INFORMATION

If you have completed your freshman, sophomore or junior year in high school by June 2009, and would like to apply to the Speech Division, you must:

- rank academically **in or near** the top 30 percent of your high school class and submit a current transcript of high school credits
- submit results of the Preliminary Scholastic Assessment Test (PSAT), when available
- meet a high standard of character, dependability, and intelligence
- give evidence of special ability or interest in speech-forensics
- complete by July 1, 2009, your freshman, sophomore or junior year of high school

The Speech Division is a competitive program, and application decisions are based on ability and merit. Enrollment is limited.

DEADLINES

Early Admission: April 3, 2009 If your application, speech-forensics record, recommendation, essays, and transcript are received by April 3, 2009, you will be notified no later than May 1.

Regular Admission: May 1, 2009. If your application, speech-forensic record, recommendation, essays, and transcript are received by May 1, 2009, you will be notified no later than May 30.

Late Admission: Late applications will be accepted with a \$75 application fee and only if space is available.

It is the applicants' responsibility to make sure that ALL necessary application materials have been received in the NHSI office by the deadline dates.

If you are not sure that your application is complete, please call (800) 662-NHSI or e-mail us, nhsi@northwestern.edu.

FEES

The basic fee for the 10-day program is \$1500. The cost for the 4-day intensive AND the 10-day program is \$2250. This includes tuition, room, board, health service (not insurance), field trips, and group events. Any additional expenses are at your discretion.

Credit cards are NOT accepted for tuition payment.

A \$50 non-refundable application fee must accompany each application. (\$75 after May 1).

If you are unable to pay the application fee, call or write us to request a fee waiver.

Accepted STUDENTS

If you are accepted by the NHSI, you will receive information about housing arrangements, when to arrive on campus, what to bring, and transportation to Evanston. Upon acceptance, a \$1000 non-refundable tuition deposit will be required within 10 days.

Visit Our Website

For more detailed information

www.northwestern.edu/nhsi

Application REQUIREMENTS

In order to be accepted into the Speech Division, you must complete the requirements listed. Please read carefully and send specified materials to:

Speech Division

National High School Institute
Northwestern University
617 Noyes Street
Evanston, IL 60208-4165
P. 800.662.NHSI
P. 847.491.3026
Fax 847.467.1057
nhsi@northwestern.edu
www.northwestern.edu/nhsi

1. Submit on-line application (www.northwestern.edu/nhsi)
All applications require a \$50 application fee (\$75 after May 1).

2. On a sheet of paper, please list all forensic, debate and speech contests in which you have participated. Include for each tournament: (a) the events you entered, (b) the dates of the tournament, and (c) the results you achieved. Also list any workshops or specialty programs you have attended and list all extracurricular clubs or community activities in which you participate.

3. Ask your current forensics coach/speech teacher or other appropriate teacher for a letter of recommendation that gives us an estimate of your talents and abilities. The letter should also discuss your personal characteristics, such as initiative, reliability, leadership, and ability to work with others.

4. Ask your guidance counselor to send us the following items:

- A transcript of your high school record (official copy)
- Your grade-point average
- Your high school class rank
- Your PSAT, SAT, and/or ACT scores
- School profile sheet

5. a. Write a one-page statement telling why you want to attend the National High School Institute.

AND

b. Write a one-page statement about your previous experiences with speech, either as a competitor or observer.

Scholarships and FINANCIAL AID

If you are interested in applying to the Speech Division, ***you are encouraged to do so regardless of your financial status.***

We urge all talented and passionate students with need to apply for Financial Aid. Do not miss out on this extraordinary opportunity due to financial restraints. Each year a large number of our students receive scholarships or financial aid.

Awards are made on the basis of financial need. If you wish to apply for a scholarship or financial assistance, you should complete and return a financial aid application.

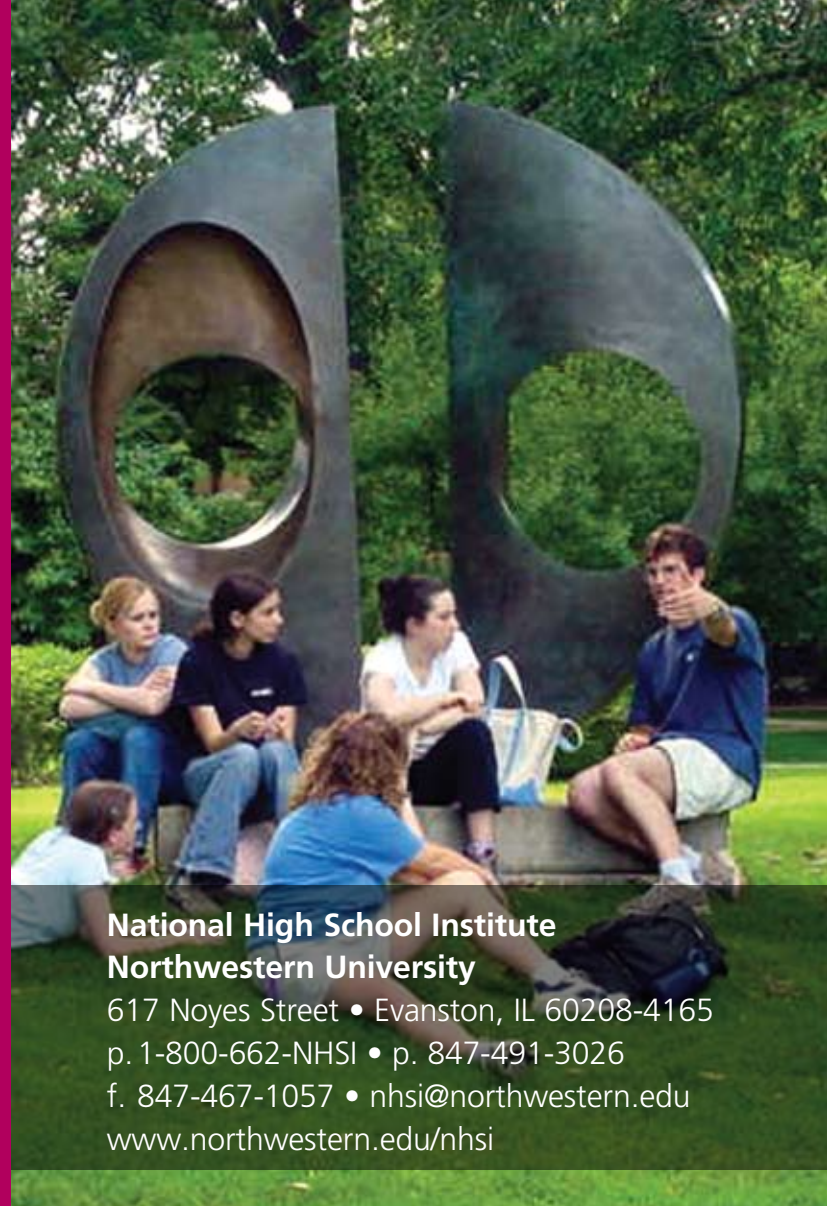
Typical Daily Schedule

(note: each department will have slightly different schedules)

8:00 am	Breakfast
9:00 am	Lectures and Practice
11:00 am	Research
12:30 pm	Lunch
1:30 pm	Area workshops (as determined by faculty)
6:00 pm	Dinner
7:00 pm	Individual coaching appointments
10:30 pm	Lights out

*This schedule will be followed seven days a week.
Field trips are added to this schedule.*

We are able to coach ALL state and NFL speech events. If you do not see your event listed but are interested in attending, please contact us at nhsi@northwestern.edu.



National High School Institute Northwestern University

617 Noyes Street • Evanston, IL 60208-4165
p. 1-800-662-NHSI • p. 847-491-3026
f. 847-467-1057 • nhsi@northwestern.edu
www.northwestern.edu/nhsi

The National High School Institute, established in 1931, is the nation's oldest and largest university-based program for outstanding high school students.

Approximately 850 of the nation's best students will enroll in the Institute's 6 Divisions: Debate, Speech, Journalism, Music, Film & Video Production, and Theatre Arts.

Students in the Institute are affectionately called "Cherubs," a tradition that began in the 1930s with the founder of the Institute, Dean Ralph Dennis.

Visit Our Website

For more detailed information

www.northwestern.edu/nhsi

In each of the 6 divisions, students gain practical college-level experience in their chosen field; interact closely with outstanding faculty; tackle new social and intellectual challenges; and experience campus life with other exceptional high school students. NHSI students leave the Institute better able to make decisions about their future, and many go on to study at the finest colleges and universities.

The NHSI boasts a distinguished body of alumni, including U.S. Representative Richard Gephardt; CBS news correspondent Barry

Petersen; President Kennedy's assistant and speech writer Theodore C. Sorensen; CBS news correspondent Sander Vanocur; TV newscaster and producer Charles Kuralt; and actors Cloris Leachman, David Schwimmer, and Noah Wyle.

