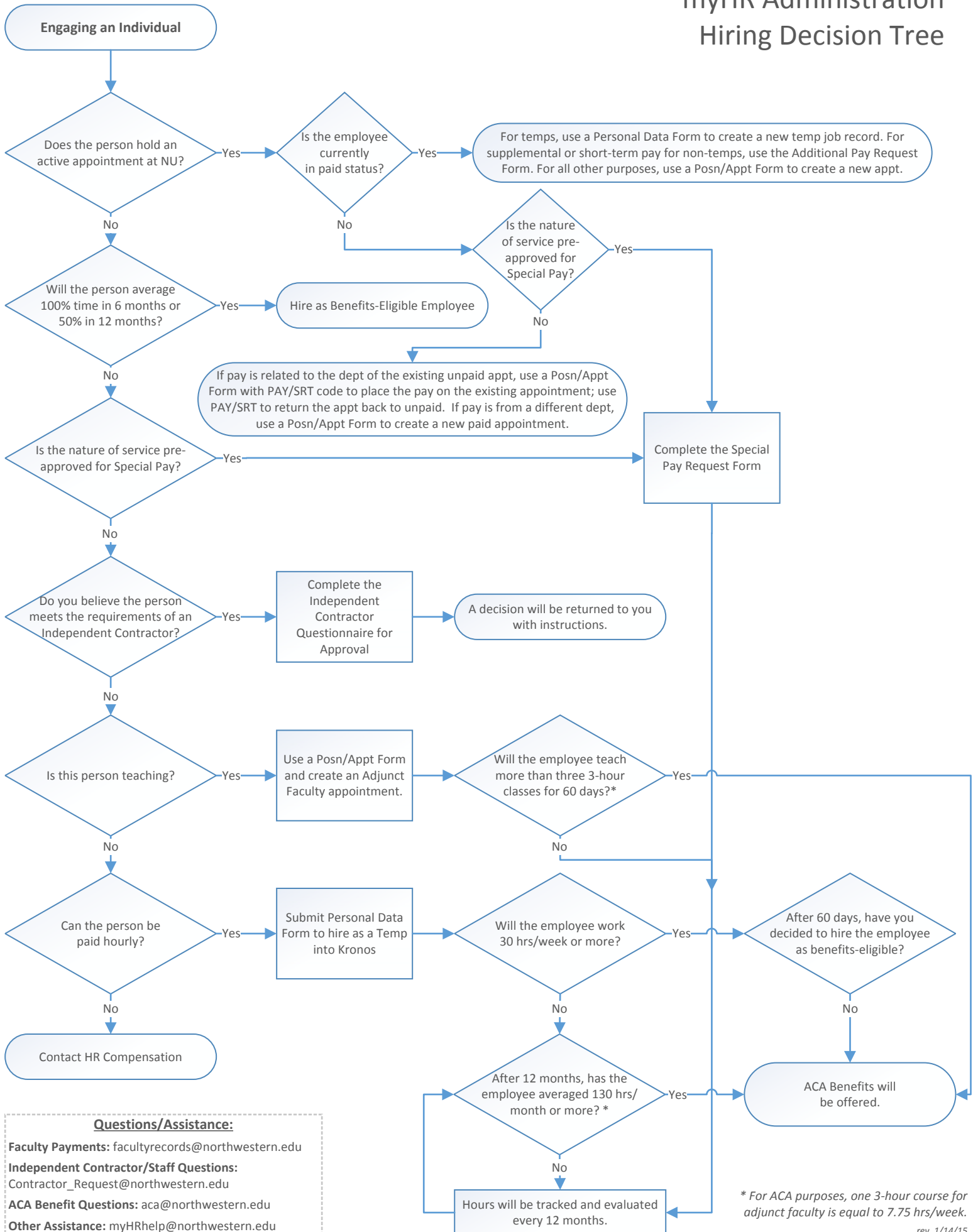


# myHR Administration Hiring Decision Tree



**Questions/Assistance:**

**Faculty Payments:** facultyrecords@northwestern.edu

**Independent Contractor/Staff Questions:** Contractor\_Request@northwestern.edu

**ACA Benefit Questions:** aca@northwestern.edu

**Other Assistance:** myHRhelp@northwestern.edu

\* For ACA purposes, one 3-hour course for adjunct faculty is equal to 7.75 hrs/week.