

COMMUNITY COUNCIL FOR INTERNATIONAL STUDENTS (CCIS)

CCIS is an all-volunteer group of people dedicated to making Northwestern's international students and scholars feel welcome by offering a variety of social and informational programs. These include:

- Foster Relative
- Homestay
- English Conversation Partners
- Children's Playgroup
- International Women's Group
- English Conversation for Spouses

If you are an international student or a community volunteer who would like to participate in one of these programs, see the program contacts listed on the International Office website:

www.northwestern.edu/international/ccis/index.html

LOCATIONS:

Evanston

630 Dartmouth Pl
Evanston, IL 60208

Chicago

710 N. Lakeshore Dr
Abbott Hall—Rm 1012
Chicago, IL 60611

OFFICE HOURS:

Evanston

Mon-Wed 9am-4:30pm
Thurs-Fri 10am-4:30pm

Chicago (Walk-Ins)

Scholar Tuesdays:
9am-3pm
Student Wednesdays:
9am-4:30pm

WALK-IN ADVISING (Evanston)

Students:

Monday - Thursday 10am-1pm; 2-4pm

Scholars:

Wednesdays
10am-1pm; 2-4pm

© 10, 2009
Nick Seamons, Coordinator
Cover Photo: Jared Raju

630 Dartmouth Place
Evanston, IL 60208
Tel: 847-491-5613
Fax: 847-467-2147
www.northwestern.edu/international

INTERNATIONAL OFFICE
NORTHWESTERN UNIVERSITY



2008 FACTS

THE INTERNATIONAL OFFICE—NORTHWESTERN UNIVERSITY

The International Office—Mission, Services, and Programs

MISSION

The International Office (IO) provides professional support and advising services to international students and scholars at Northwestern regarding their immigration status in the U.S. The IO is committed to providing quality advising services and supportive programming to students, scholars, and their dependents in F-1, J-1, and H-1B visa categories, among others.

SERVICES

- Advising international students concerning F-1 and J-1 student visas.
- Advising international scholars concerning J-1, H-1B, E-3, TN, and Legal Permanent Residency.
- Advising hiring and admitting departments concerning immigration regulations for intl. students/scholars.
- Supportive programming for students and scholars.

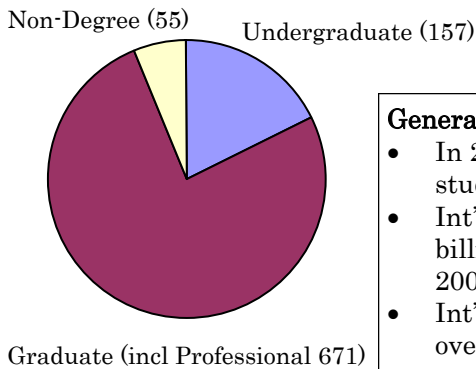
PROGRAMS

- The IO maintains a wide variety of programming for international students, scholars, and their dependents, such as:
- Orientation Programs for new int'l students/scholars.
 - Employment workshops for students.
 - Collaborative workshop series for int'l graduate students and post-doctoral fellows.
 - *Intercambio* program—the pairing of int'l and American students to cultural exchange.
 - International Speakers Bureau—int'l students and scholars speaking on-campus and in the community.
 - Tax assistance for int'l students and scholars.
 - CCIS Programs—see back panel for detailed information.
 - IO Listservs for students, scholars, departments, and international dependents for updated regulatory and programmatic information.

INTERNATIONAL STUDENT STATISTICS—Northwestern experienced a 19% increase in the number of international students enrolled between 2007 and 2008. In 2007, Northwestern hosted 2,027 international students, and in 2008 the number jumped to 2,412, from more than 100 countries around the world.

New Students—Fall 2008

883 new international students enrolled at Northwestern in the fall 2008.



Current Students—Fall 2008

Top Five Countries:

1. China
2. South Korea
3. India
4. Taiwan
5. Canada

General Information on Int'l Students:

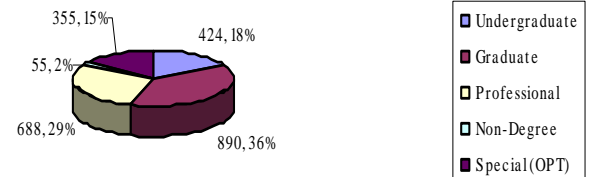
- In 2007/08, there were 28,804 int'l students in the state of Illinois.
- Int'l students contributed over \$15.5 billion to the U.S. economy in 2007/08.
- Int'l students in Illinois contributed over \$710 million to the state economy.

(Source: Open Doors Report 2008, IIE)

NU International Student Quick Facts:

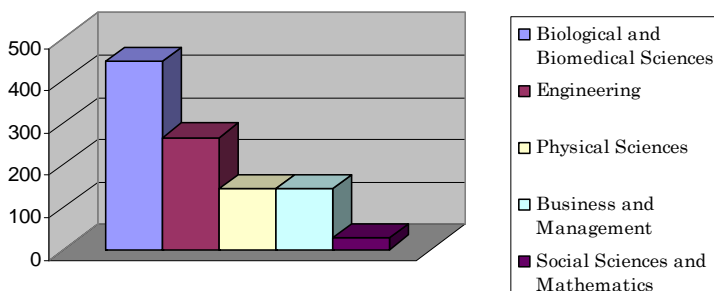
- 62% are male and 38% are female.
- 110 countries are represented.
- NU hosted 9 Fulbright students in 2008.
- Int'l students comprise 12.5% of the total student population at NU.

Academic Levels



INTERNATIONAL SCHOLAR STATISTICS—Northwestern is home to 1,249 international scholars in a variety of roles and disciplines on both the Evanston and Chicago campuses. From short-term scholars to researchers and faculty, international scholars at NU come from more than 70 different countries.

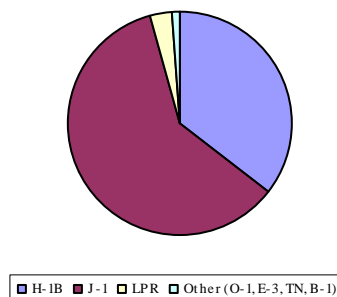
Top 5 Fields



Top Five Countries:

1. China
2. India
3. South Korea
4. Germany
5. Japan

Scholar Visa Type



Scholar Numbers

- J-1: 747
- H-1B: 445
- LPR: 44
- TN: 5
- B-1: 4
- E-3: 3
- O-1: 1

NU International Scholar Quick Facts:

- 65% are male and 35% are female.
- Over 70 countries are represented.